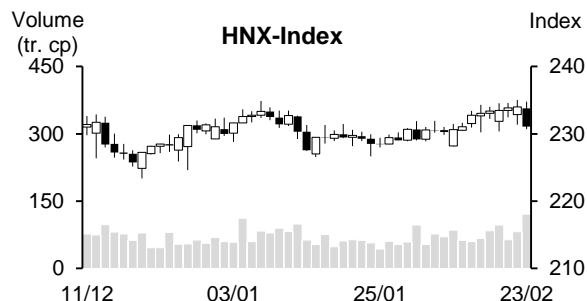
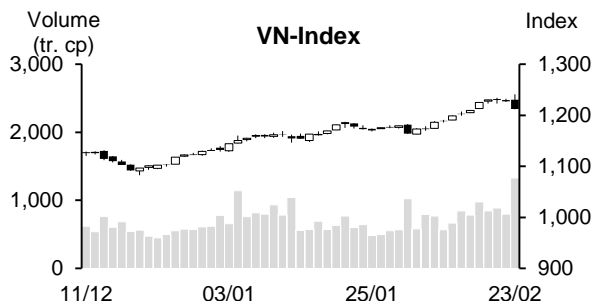


Day	Monday 19/02	Tuesday 20/02	Wednesday 21/02	Thursday 22/02	Friday 23/02	Average
VN-Index	1,224.97	1,230.06	1,230.04	1,227.31	1,212.00	1,224.88
Change +/-	15.27	5.09	-0.02	-2.73	-15.31	0.46
Change %	1.26%	0.42%	0.00%	-0.22%	-1.25%	0.04%
Matched volume (mil. shares)	975.54	844.13	886.45	795.31	1,327.90	965.87
Matched value (bil. Dong)	22,886.97	18,944.88	20,535.00	16,808.12	30,096.87	21,854.37
Foreign net trade (bil. Dong)	137.25	123.78	-9.44	-940.08	-774.91	-292.68
VN30	1,240.20	1,241.65	1,242.08	1,239.90	1,223.09	1,237.38
Change +/-	15.66	1.45	0.43	-2.18	-16.81	-0.29
Change %	1.28%	0.12%	0.03%	-0.18%	-1.36%	-0.02%
Matched volume (mil. shares)	328.64	245.38	305.64	237.90	466.37	316.78
Matched value (bil. Dong)	10,413.11	7,569.44	9,205.38	7,010.72	13,738.48	9,587.42
Foreign net trade (bil. Dong)	416.37	27.66	-172.46	-843.80	-627.32	-239.91
HNX-Index	233.37	233.50	233.84	234.01	231.08	233.16
Change +/-	0.33	0.13	0.34	0.17	-2.93	-0.39
Change %	0.14%	0.06%	0.15%	0.07%	-1.25%	-0.17%
Matched volume (mil. shares)	83.70	96.69	64.07	81.47	121.12	89.41
Matched value (bil. Dong)	1,575.38	1,742.36	1,212.22	1,428.05	2,159.81	1,623.56
Foreign net trade (bil. Dong)	-5.08	6.37	-40.36	21.18	-21.81	-7.94



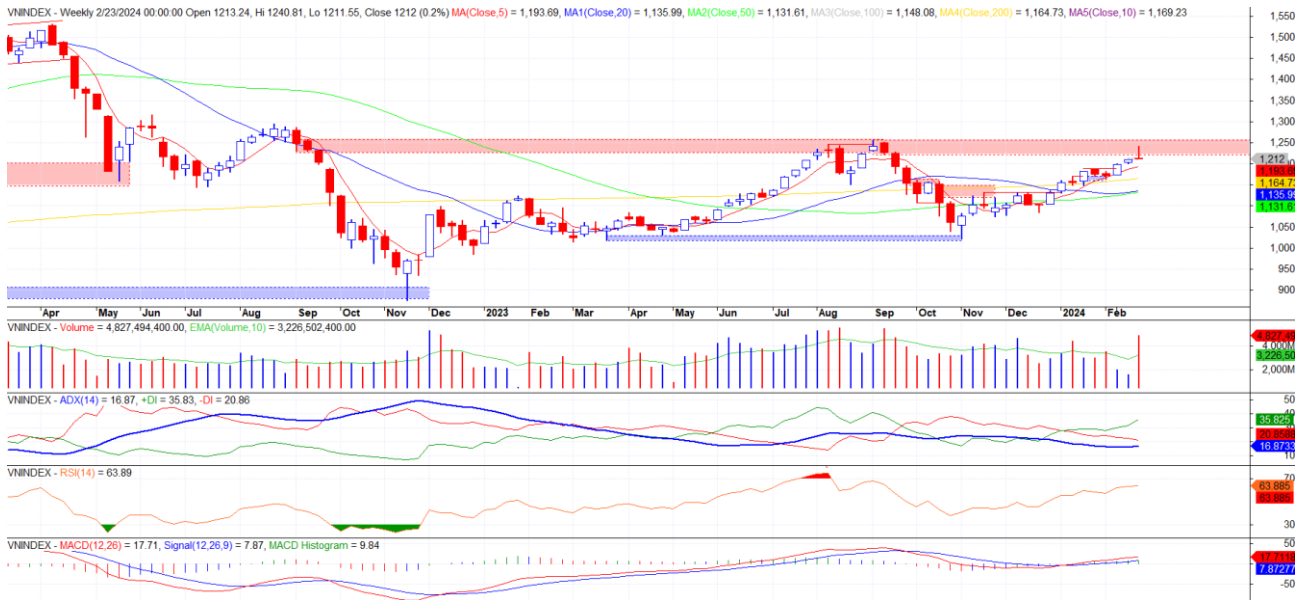
REMARKABLE POINTS ON THE MARKET

The market saw an eventful week. The indexes gained further in the first two sessions of the week with selling pressure and dropped again in following sessions. Especially, there was a sudden reversing session on Friday with the liquidity increasing strongly which claimed most achievement received in the first sessions of the week. The groups differentiated strongly. The selling was strong on Friday, but banking and real estate pillars still saw a positive week and led the index's gaining trend. Midcap and penny groups also saw some remarkable gainers like Viettel and pharmaceutical. On the contrary, securities, steel, and retail saw remarkable correcting pressure in the whole week. Foreign investors saw the 4th net selling week in a row with stronger sign.

TECHNICAL POINT OF VIEW

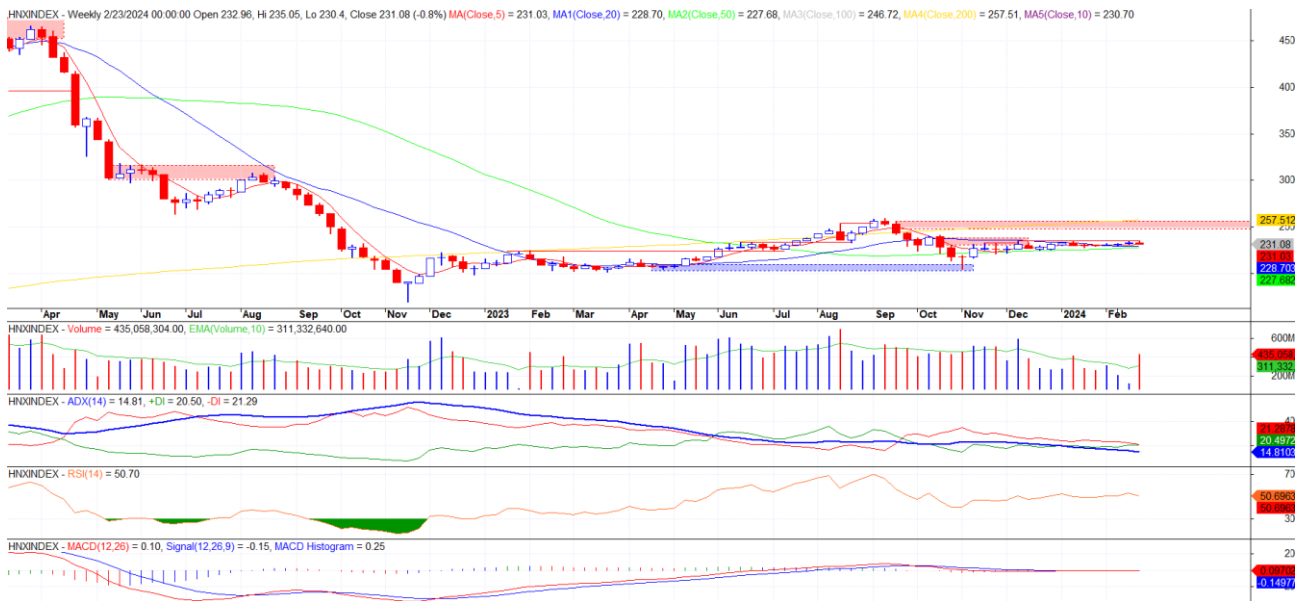
VN-Index saw a strong change on negative direction when moving to 1,230-1,255. The index saw a strong drop at the end of the week with much higher volume, showing strong selling pressure at this level. The sign isn't enough to confirm peak on daily chart, the market will need a strong dropping candle with high volume above average and break 1,210-1,212 gap to confirm. However, there was a strong selling at supply level which was a remarkable sign on creating peak. As the index closed at gap level, we hope that the index might recover slightly in the first half of this week before seeing a strong drop. If peak level is confirmed, mid-term gaining trend will end from the middle of December, then it might start a rather strong drop. Two remarkable demand levels for this drop are 1,162-1,182 and 1,130-1,145 points.

VN-Index



HNX-Index dropped again, hasn't surpass peak around 235. On daily chart, the index struggled below resistant and dropped to create a long head-withdraw candle at the end of the week, the volume increased, showing strong selling pressure. The index still maintained support MA lines around 230, if the market drops further to break this level, it might maintain sideways level of 223-235, if the index can stay above support level of 230, it might still break out.

HNX-Index



In general, both indexes saw strong selling pressure around resistant level, it isn't enough to confirm peak level but it is a remarkable bad sign, with chance of seeing a strong drop. General strategy is staying out, using recoveries to lower the weight to a low level if having strong share weight.

MARKET STATISTICS**TOP 5 IN MATCHING VOLUME**

HOSE			
Ticker	Closing (VND)	Change %	Volume (share)
SHB	11,850	-0.42%	164,810,471
NVL	17,000	-3.95%	156,674,092
VND	22,050	-4.96%	154,142,727
VIX	17,500	-2.51%	153,913,303
HPG	28,400	-0.70%	145,039,193

HNX			
Ticker	Closing (VND)	Change %	Volume (share)
SHS	17,300	-3.35%	85,484,550
CEO	21,200	-2.30%	46,245,090
PVS	36,000	-3.23%	29,726,354
MBS	26,200	-3.68%	23,817,366
HUT	18,600	-3.13%	20,818,704

TOP 5 IN MATCHING VALUE

HOSE			
Ticker	Closing (VND)	Change %	Value (bil. VND)
HPG	28,400	-0.70%	4,185.7
STB	30,650	-0.49%	3,916.9
SSI	34,150	-2.43%	3,764.2
VND	22,050	-4.96%	3,503.8
MBB	23,900	-0.42%	3,135.9

HNX			
Ticker	Closing (VND)	Change %	Value (bil. VND)
SHS	17,300	-3.35%	1,521.8
PVS	36,000	-3.23%	1,104.9
CEO	21,200	-2.30%	1,003.4
IDC	56,500	0.36%	719.8
MBS	26,200	-3.68%	638.7

STATISTICS ON THE IMPACT ON THE INDEX**TOP 5 GAINING IMPACT**

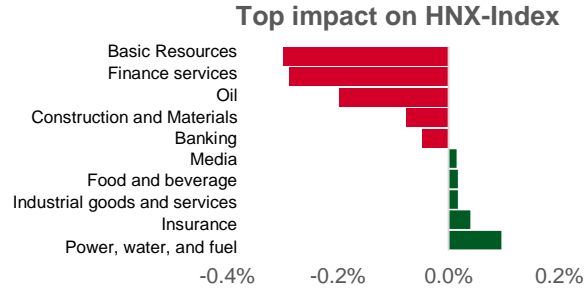
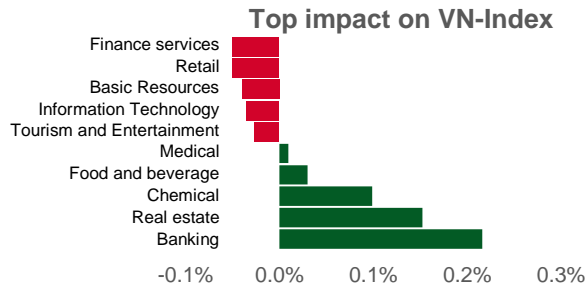
HOSE			
Ticker	Closing (VND)	Change %	Impact %
BID	52,000	7.11%	0.41%
VRE	25,450	13.11%	0.14%
TCB	40,100	4.16%	0.12%
VIC	45,200	2.84%	0.10%
GVR	27,550	3.38%	0.07%

HNX			
Ticker	Closing (VND)	Change %	Impact %
VNT	45,200	32.94%	0.06%
PVI	46,300	1.31%	0.05%
CDN	28,600	4.76%	0.04%
SEB	48,900	8.67%	0.04%
S99	10,800	12.50%	0.04%

TOP 5 DROPPING IMPACT

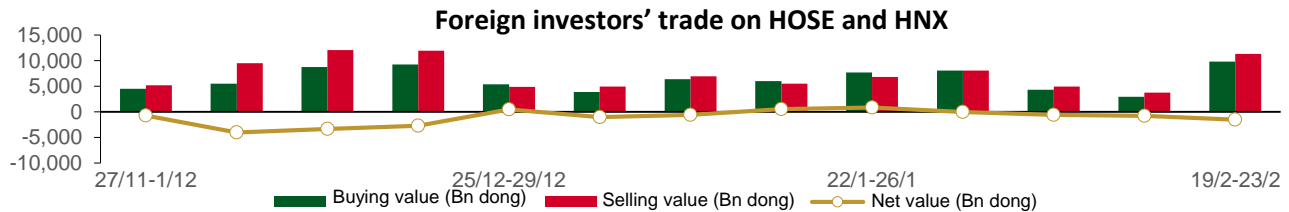
HOSE			
Ticker	Closing (VND)	Change %	Impact %
VCB	88,900	-0.78%	-0.08%
MWG	44,000	-4.97%	-0.07%
VPB	19,500	-1.76%	-0.05%
HDB	22,500	-3.43%	-0.05%
LPB	17,100	-4.74%	-0.04%

HNX			
Ticker	Closing (VND)	Change %	Impact %
VIF	14,500	-14.71%	-0.29%
PVS	36,000	-3.23%	-0.19%
SHS	17,300	-3.35%	-0.16%
MBS	26,200	-3.68%	-0.15%
HUT	18,600	-3.13%	-0.11%



STATISTICS ON FOREIGN INVESTORS' TRADE

Exchange	Buying vol. (mil. share)	Buying value (bil. VND)	Selling vol. (mil. share)	Selling value (bil. VND)	Net selling/ buying value (mil. share)	Net selling/ buying value (bil. VND)
HOSE	374.52	9,507.66	416.16	10,971.07	(41.64)	(1,463.41)
HNX	13.42	323.65	16.00	363.34	(2.58)	(39.70)
Total	387.94	9,831.31	432.16	11,334.41	(44.22)	(1,503.10)



TOP 5 BOUGHT-IN

HOSE			
Ticker	Closing (VND)	Buying vol. (share)	Buying value (bil. VND)
MSB	15,400	46,284,250	677.43
VHM	43,300	7,839,765	353.18
DGC	100,000	2,625,787	264.58
VIC	45,200	4,628,530	220.39
VRE	25,450	8,660,014	210.85

HNX			
Ticker	Closing (VND)	Buying vol. (share)	Buying value (bil. VND)
IDC	56,500	1,584,438	90.47
DTD	27,600	651,239	18.55
DHT	26,500	456,800	12.12
MBS	26,200	309,235	8.33
TNG	20,600	268,400	5.63

TOP 5 SOLD-OUT

HOSE			
Ticker	Closing (VND)	Buying vol. (share)	Buying value (bil. VND)
MWG	44,000	(11,632,998)	(530.95)
VPB	19,500	(22,995,628)	(454.65)
GEX	21,850	(10,899,445)	(243.81)
HPG	28,400	(8,141,261)	(234.35)
MSN	66,700	(2,554,828)	(173.99)

HNX			
Ticker	Closing (VND)	Buying vol. (share)	Buying value (bil. VND)
PVS	36,000	(2,566,116)	(95.03)
SHS	17,300	(3,318,063)	(59.22)
VCS	60,800	(117,796)	(7.25)
INN	48,400	(120,020)	(5.91)
EID	21,400	(202,300)	(4.47)

Analyst Certification

The report is made by Pham Quang Chuong, analyst – Phu Hung Securities Joint Stock Company. Each research analyst(s), strategist(s) or research associate(s) responsible for the preparation and content of all or any identified portion of this research report hereby certifies that, with respect to each issuer or security or any identified portion of the report with respect to each issuer or security that the research analyst, strategist or research associate covers in this research report, all of the views expressed by that research analyst, strategist or research associate in this research report accurately reflect their personal views about those issuer(s) or securities. Each research analyst(s), strategist(s) or research associate(s) also certify that no part of their compensation was, is, or will be, directly or indirectly, related to the specific recommendation(s) or view(s) expressed by that research analyst, strategist or research associate in this research report.

Ratings Definition

Buy = higher than domestic market by over 10%
Hold = similar to domestic market at the rate of +10% ~ -10%
Sell = lower than domestic market by below 10%
No rating = the code is not rated in Phu Hung or not yet listed
The performance is determined by total recollection in 12 months (including dividend).

Analyst Certification

This information has been compiled from sources we believe to be reliable, but we do not hold ourselves responsible for its completeness or accuracy. It is not an offer to sell or solicitation of an offer to buy any securities. Phu Hung Securities and its affiliates and their officers and employees may or may not have a position in or with respect to the securities mentioned herein. Phu Hung Securities (or one of its affiliates) may from time to time perform investment banking or other services or solicit investment banking or other business for any company mentioned in this report. All opinions and estimates included in this report constitute our judgment as of this date and are subject to change without notice.

© Phu Hung Securities Corporation

F21, Phu My Hung Tower, 08 Hoang Van Thai, Tan Phu Ward, District 7, HCMC
Phone: (84-28) 5 413 5479 Fax: (84-28) 5 413 5472
Customer Service: 1900 25 23 58 Call Center: (84-28) 5 413 5488
E-mail: info@phs.vn / support@phs.vn Web: www.phs.vn

Phu My Hung Trading office

CR2-08 building, 107 Ton Dat
Tien, Tan Phu Ward, District 7,
HCMC
Tel: (84-28) 5 413 5478
Fax: (84-28) 5 413 5473

District 3 Branch

F4-5, D&D Tower,
458 Nguyen Thi Minh Khai,
Ward 2, District 3, HCMC
Tel: (84-28) 3 820 8068
Fax: (84-28) 3 820 8206

Thanh Xuan Branch

F5, UDIC Complex, N04 Hoang Dao
Thuy, Trung Hoa Ward, Cau Giay
District, Hanoi
Tel: (84-24) 6 250 9999
Fax: (84-24) 6 250 6666

Tan Binh Branch

Park Legend Building
251 Hoang Van Thu, Ward 2, Tan
Binh District, HCMC
Tel: (84-28) 3 813 2401
Fax: (84-28) 3 813 2415

Hanoi Branch

F5, Vinafor Tower, 127 Lo
Duc, Hai Ba Trung District,
Hanoi
Tel: (84-24) 3 933 4566
Fax: (84-24) 3 933 4820

Hai Phong Branch

F2, Eliteco Building, Tran Hung Dao,
Hong Bang District, Hai Phong
Tel: (84-225) 384 1810
Fax: (84-225) 384 1801

District 1 Branch

No 1003A, F10, Ruby Tower, 81-
83-83B-85 Ham Nghi, Nguyen
Thai Binh Ward, District 1, HCMC
Tel: ((84-28) 3 535 6060
Fax: (84-28) 3 535 2912