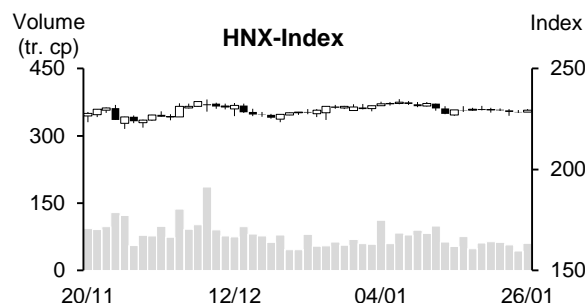
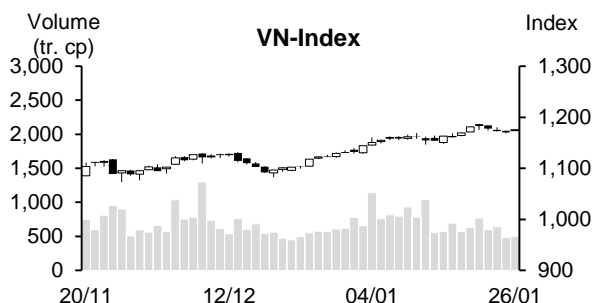


Day	Monday 22/01	Tuesday 23/01	Wednesday 24/01	Thursday 25/01	Friday 26/01	Average
VN-Index	1,182.86	1,177.50	1,172.97	1,170.37	1,175.67	1,175.87
Change +/-	1.36	-5.36	-4.53	-2.60	5.30	-1.17
Change %	0.12%	-0.45%	-0.38%	-0.22%	0.45%	-0.10%
Matched volume (mil. shares)	771.09	600.82	644.27	480.88	498.41	599.09
Matched value (bil. Dong)	16,096.33	12,963.36	13,353.08	10,016.54	10,954.83	12,676.83
Foreign net trade (bil. Dong)	462.81	238.67	89.54	-136.60	241.34	179.15
VN30	1,189.56	1,183.85	1,179.45	1,177.52	1,182.82	1,182.64
Change +/-	4.33	-5.71	-4.40	-1.93	5.30	-0.48
Change %	0.37%	-0.48%	-0.37%	-0.16%	0.45%	-0.04%
Matched volume (mil. shares)	257.37	200.04	216.76	148.36	141.32	192.77
Matched value (bil. Dong)	6,986.09	5,633.27	5,863.63	4,148.93	4,073.43	5,341.07
Foreign net trade (bil. Dong)	151.41	208.06	68.63	-39.26	-149.70	47.83
HNX-Index	229.77	229.26	228.53	228.52	229.43	229.10
Change +/-	0.29	-0.51	-0.73	-0.01	0.91	-0.01
Change %	0.13%	-0.22%	-0.32%	0.00%	0.40%	0.00%
Matched volume (mil. shares)	64.15	62.26	56.50	42.98	60.11	57.20
Matched value (bil. Dong)	1,184.76	1,147.21	1,000.06	718.69	919.52	994.05
Foreign net trade (bil. Dong)	-7.57	-22.12	2.44	9.22	2.69	-3.07



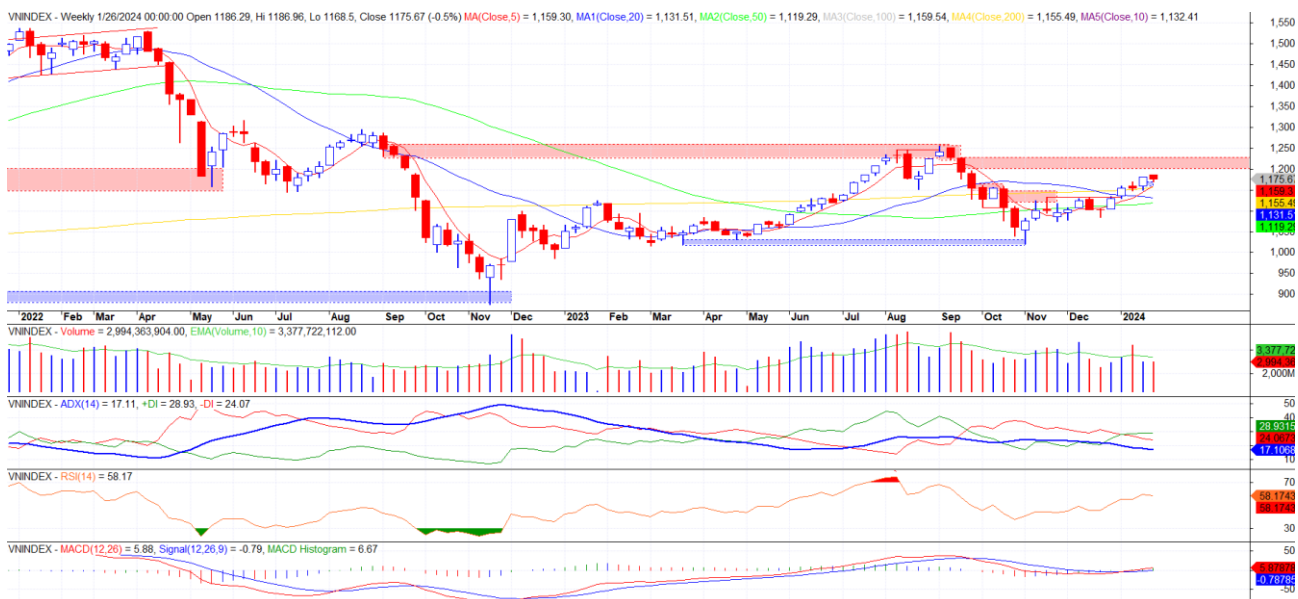
### REMARKABLE POINTS ON THE MARKET

The market saw a dropping week again after 4 gaining ones. The cash flow tended to move strongly among the groups. In detail, other than steel that could stay on the trend, some groups gained well and were the main pull for the market last week like banking, real estate, and food and beverage were sold and dropped again. Securities also gained excitedly after a shaking phase as many companies released positive results. Besides, the cash flow tended on midcap and penny codes for profit. Standing out was the gain on chemical, agriculture, and plastic. The positive point last week came from foreign investors. In detail, they saw a net buying of over 880 billion on two exchanges, marking the second net buying week in a row. This is also the highest net buying volume by week from the end of August 2023.

### TECHNICAL POINT OF VIEW

VN-Index corrected again after previous positive gaining week. Correcting sign wasn't too bad with smaller dropping candles and lower volume, showing weak selling, so it might only be technical correction. The index recovered at the end of the week but the sign wasn't strong enough to confirm bottom, but the index dropped to support level of 1,160-1,170 points, so we think that there might soon be sign confirming the correction bottom and the index will return to gaining trend next week. Remarkable resistant level will still be 1,200-1,230 points.

### VN-Index



HNX-Index saw a light changing week, with a Doji candle and lower volume. On daily chart, the sign still stayed below MA20 but the trend was flat so we don't think this sign is too negative. Last session of the week gained slightly with higher volume, showing that the cash flow is joining. If there is still a positive gain with high volume, the index might gain to above 235, and will return to middle-term gaining trend toward 247-255.

### HNX-Index



In general, last week, VN-Index saw a positive correction to support level, while HNX-Index was still flat but there was sign of the cash flow at the end of the week, with hope that both indexes will see positive trade again. General strategy might be keeping a high weight, considering lowering if the index gains to resistant level of 1,200-1,230, waiting to cover again. Having priority on Securities, Steel, real estate, industrial park, retail, banking, power construction, oil, pig farming, and stone.

**MARKET STATISTICS****TOP 5 IN MATCHING VOLUME**

<b>HOSE</b>			
Ticker	Closing (VND)	Change %	Volume (share)
SHB	12,350	1.65%	162,078,738
HPG	28,350	1.98%	133,541,229
STB	30,300	0.00%	88,605,004
VIX	17,350	0.00%	88,035,329
NVL	16,600	1.22%	82,811,010

<b>HNX</b>			
Ticker	Closing (VND)	Change %	Volume (share)
SHS	18,400	0.00%	65,910,142
MBS	24,600	5.13%	23,619,735
CEO	21,700	-0.46%	23,411,111
PVS	36,900	0.00%	15,795,020
HUT	19,500	-0.51%	12,931,143

**TOP 5 IN MATCHING VALUE**

<b>HOSE</b>			
Ticker	Closing (VND)	Change %	Value (bil. VND)
HPG	28,350	1.98%	3,780.1
SSI	34,100	1.19%	2,784.6
STB	30,300	0.00%	2,706.7
SHB	12,350	1.65%	1,981.9
MBB	22,000	-0.23%	1,808.9

<b>HNX</b>			
Ticker	Closing (VND)	Change %	Value (bil. VND)
SHS	18,400	0.00%	1,219.5
PVS	36,900	0.00%	584.2
MBS	24,600	5.13%	575.1
CEO	21,700	-0.46%	511.2
HUT	19,500	-0.51%	253.1

**STATISTICS ON THE IMPACT ON THE INDEX****TOP 5 GAINING IMPACT**

<b>HOSE</b>			
Ticker	Closing (VND)	Change %	Impact %
HPG	28,350	1.98%	0.07%
HCM	26,850	10.04%	0.04%
TCB	35,400	1.29%	0.03%
ACB	26,300	1.35%	0.03%
SIP	72,100	10.92%	0.03%

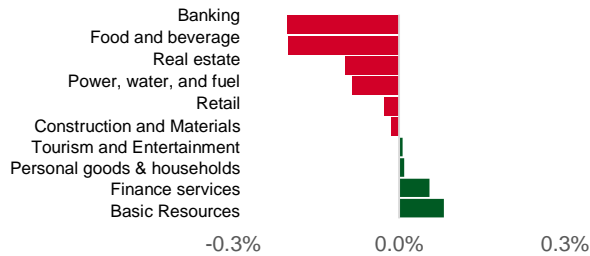
<b>HNX</b>			
Ticker	Closing (VND)	Change %	Impact %
MBS	24,600	5.13%	0.17%
LAS	16,800	11.26%	0.06%
NET	80,000	8.40%	0.05%
PRE	18,800	6.21%	0.04%
VFS	18,900	3.85%	0.03%

**TOP 5 DROPPING IMPACT**

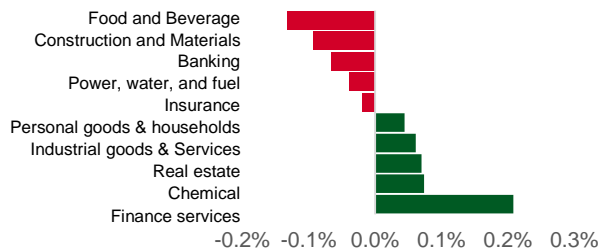
<b>HOSE</b>			
Ticker	Closing (VND)	Change %	Impact %
SAB	57,300	-6.68%	-0.11%
BID	48,950	-1.81%	-0.11%
VHM	42,000	-2.44%	-0.10%
GAS	75,200	-1.96%	-0.07%
VCB	92,000	-0.65%	-0.07%

<b>HNX</b>			
Ticker	Closing (VND)	Change %	Impact %
HHC	82,300	-18.76%	-0.10%
DNP	20,000	-6.54%	-0.05%
PVI	45,100	-1.53%	-0.05%
NVB	11,300	-1.74%	-0.04%
BAB	12,400	-0.80%	-0.03%

**Top impact on VN-Index**

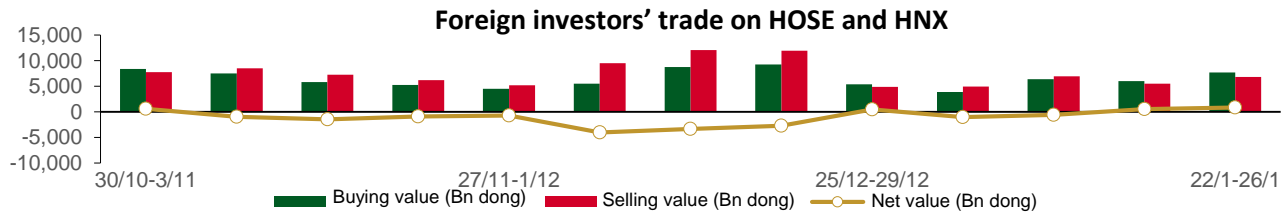


**Top impact on HNX-Index**



**STATISTICS ON FOREIGN INVESTORS' TRADE**

Exchange	Buying vol. (mil. share)	Buying value (bil. VND)	Selling vol. (mil. share)	Selling value (bil. VND)	Net selling/ buying value (mil. share)	Net selling/ buying value (bil. VND)
HOSE	290.39	7,619.69	233.62	6,723.93	56.77	895.76
HNX	2.90	89.55	5.27	104.88	-2.37	-15.34
<b>Total</b>	<b>293.28</b>	<b>7,709.24</b>	<b>238.89</b>	<b>6,828.82</b>	<b>54.39</b>	<b>880.42</b>



**TOP 5 BOUGHT-IN**

HOSE			
Ticker	Closing (VND)	Buying vol. (share)	Buying value (bil. VND)
VCG	25,450	12,639,456	321.50
HPG	28,350	10,255,371	289.75
EIB	19,500	11,914,729	237.73
CTG	32,100	5,958,469	192.12
STB	30,300	5,783,792	177.78

HNX			
Ticker	Closing (VND)	Buying vol. (share)	Buying value (bil. VND)
IDC	51,200	709,240	36.01
PVS	36,900	199,400	7.43
BVS	26,000	208,200	5.43
DHT	25,400	88,000	2.19
TNG	19,500	55,000	1.08

**TOP 5 SOLD-OUT**

HOSE			
Ticker	Closing (VND)	Buying vol. (share)	Buying value (bil. VND)
VNM	67,000	-2,623,466	-176.69
SAB	57,300	-2,973,149	-174.39
DGC	88,900	-1,781,921	-159.29
VHM	42,000	-3,326,925	-140.98
MSN	65,800	-2,026,104	-134.87

HNX			
Ticker	Closing (VND)	Buying vol. (share)	Buying value (bil. VND)
CEO	21,700	-978,750	-21.51
SHS	18,400	-553,843	-10.21
TIG	12,100	-493,471	-6.08
EID	20,300	-195,800	-4.04
HUT	19,500	-189,000	-3.73

### **Analyst Certification**

The report is made by Pham Quang Chuong, analyst – Phu Hung Securities Joint Stock Company. Each research analyst(s), strategist(s) or research associate(s) responsible for the preparation and content of all or any identified portion of this research report hereby certifies that, with respect to each issuer or security or any identified portion of the report with respect to each issuer or security that the research analyst, strategist or research associate covers in this research report, all of the views expressed by that research analyst, strategist or research associate in this research report accurately reflect their personal views about those issuer(s) or securities. Each research analyst(s), strategist(s) or research associate(s) also certify that no part of their compensation was, is, or will be, directly or indirectly, related to the specific recommendation(s) or view(s) expressed by that research analyst, strategist or research associate in this research report.

### **Ratings Definition**

Buy = higher than domestic market by over 10%  
Hold = similar to domestic market at the rate of +10% ~ -10%  
Sell = lower than domestic market by below 10%  
No rating = the code is not rated in Phu Hung or not yet listed  
The performance is determined by total recollection in 12 months (including dividend).

### **Analyst Certification**

This information has been compiled from sources we believe to be reliable, but we do not hold ourselves responsible for its completeness or accuracy. It is not an offer to sell or solicitation of an offer to buy any securities. Phu Hung Securities and its affiliates and their officers and employees may or may not have a position in or with respect to the securities mentioned herein. Phu Hung Securities (or one of its affiliates) may from time to time perform investment banking or other services or solicit investment banking or other business for any company mentioned in this report. All opinions and estimates included in this report constitute our judgment as of this date and are subject to change without notice.

#### **© Phu Hung Securities Corporation**

F21, Phu My Hung Tower, 08 Hoang Van Thai, Tan Phu Ward, District 7, HCMC  
Phone: (84-28) 5 413 5479 Fax: (84-28) 5 413 5472  
Customer Service: 1900 25 23 58 Call Center: (84-28) 5 413 5488  
E-mail: [info@phs.vn](mailto:info@phs.vn) / [support@phs.vn](mailto:support@phs.vn) Web: [www.phs.vn](http://www.phs.vn)

#### **Phu My Hung Trading office**

CR2-08 building, 107 Ton Dat  
Tien, Tan Phu Ward, District 7,  
HCMC  
Tel: (84-28) 5 413 5478  
Fax: (84-28) 5 413 5473

#### **District 3 Branch**

F4-5, D&D Tower,  
458 Nguyen Thi Minh Khai,  
Ward 2, District 3, HCMC  
Tel: (84-28) 3 820 8068  
Fax: (84-28) 3 820 8206

#### **Thanh Xuan Branch**

F5, UDIC Complex, N04 Hoang Dao  
Thuy, Trung Hoa Ward, Cau Giay  
District, Hanoi  
Tel: (84-24) 6 250 9999  
Fax: (84-24) 6 250 6666

#### **Tan Binh Branch**

Park Legend Building  
251 Hoang Van Thu, Ward 2, Tan  
Binh District, HCMC  
Tel: (84-28) 3 813 2401  
Fax: (84-28) 3 813 2415

#### **Hanoi Branch**

F5, Vinafor Tower, 127 Lo  
Duc, Hai Ba Trung District,  
Hanoi  
Tel: (84-24) 3 933 4566  
Fax: (84-24) 3 933 4820

#### **Hai Phong Branch**

F2, Eliteco Building, Tran Hung Dao,  
Hong Bang District, Hai Phong  
Tel: (84-225) 384 1810  
Fax: (84-225) 384 1801

#### **District 1 Branch**

No 1003A, F10, Ruby Tower, 81-  
83-83B-85 Ham Nghi, Nguyen  
Thai Binh Ward, District 1, HCMC  
Tel: ((84-28) 3 535 6060  
Fax: (84-28) 3 535 2912