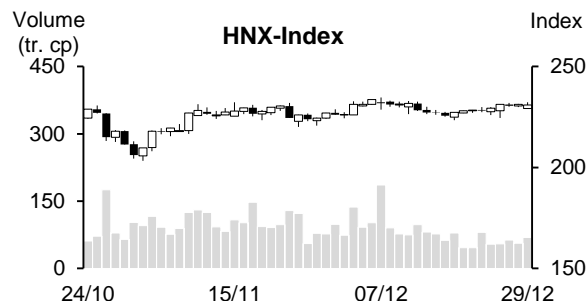
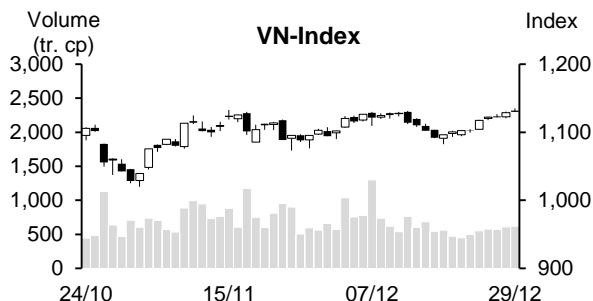


Day	Monday 25/12	Tuesday 26/12	Wednesday 27/12	Thursday 28/12	Friday 29/12	Average
VN-Index	1,117.66	1,122.25	1,121.99	1,128.93	1,129.93	1,124.15
Change +/-	14.60	4.59	-0.26	6.94	1.00	5.37
Change %	1.32%	0.41%	-0.02%	0.62%	0.09%	0.48%
Matched volume (mil. shares)	551.04	575.48	570.94	608.69	616.69	584.57
Matched value (bil. Dong)	12,035.44	13,043.12	12,209.81	12,977.33	13,098.52	12,672.84
Foreign net trade (bil. Dong)	-121.94	-309.96	114.10	443.43	342.07	93.54
VN30	1,111.86	1,115.52	1,115.94	1,128.51	1,131.46	1,120.66
Change +/-	14.41	3.66	0.42	12.57	2.95	6.80
Change %	1.31%	0.33%	0.04%	1.13%	0.26%	0.61%
Matched volume (mil. shares)	136.66	151.87	128.76	167.31	179.37	152.79
Matched value (bil. Dong)	4,186.71	4,606.45	3,830.55	4,971.42	5,067.97	4,532.62
Foreign net trade (bil. Dong)	-130.21	-112.31	120.74	91.31	37.25	1.35
HNX-Index	229.45	231.26	230.60	231.35	231.04	230.74
Change +/-	1.18	1.81	-0.66	0.75	-0.31	0.55
Change %	0.52%	0.79%	-0.29%	0.33%	-0.13%	0.24%
Matched volume (mil. shares)	54.28	54.87	62.93	56.22	69.09	59.48
Matched value (bil. Dong)	1,053.91	1,119.24	1,170.39	1,035.10	1,264.11	1,128.55
Foreign net trade (bil. Dong)	4.69	-26.75	-4.42	11.22	29.93	2.93



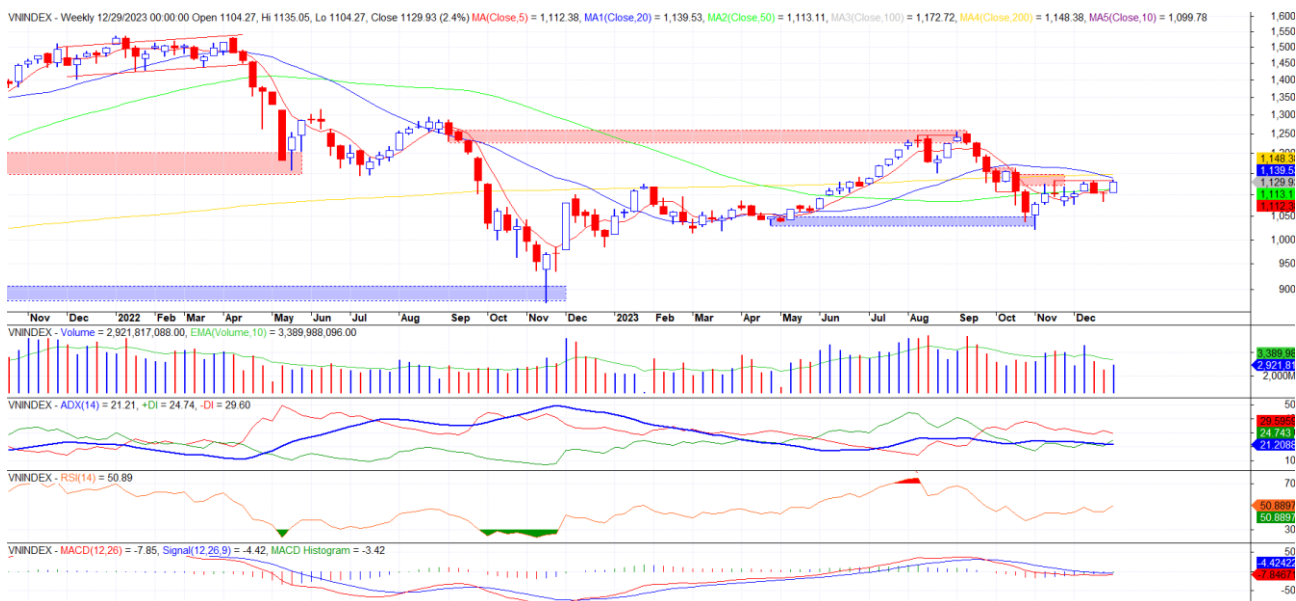
REMARKABLE POINTS ON THE MARKET

The market closed the final week of 2023 in excitement with VN-Index closing at the highest level of 11 weeks. Main indexes still gained in most trading sessions and the cash flow tended to focus on pillars. Especially the gain of banking codes after a long while of correcting previously. The liquidity improved clearly, and foreign investors also suddenly turned to a net buying, showing that the cash flow is returning to Vietnam stock market.

TECHNICAL POINT OF VIEW

VN-Index saw a positive trade in the final week of the year, forming a thick long gaining candle following base-withdraw Doji candle previously. On daily chart, the index saw 5 gaining sessions in a row to old peak around 1,132, and there was a head-withdraw candle that hasn't surpassed peak level in the last session of the year, and overbuying share rate is increasing to a high level. This showed that there might be a correction again. However, we hope that it might only be a light correction, can hardly see strong drop to lower line of Sideway trend. Support level is 1,100-1,105. Current signs are supporting the possibility that the index might soon break the peak of 1,132. Then, mid-term gaining trend is confirmed to return and the target might be 1,200-1,230.

VN-Index



HNX-Index also gained again positively, but week-sign hasn't changed much. On daily chart, the sign was clearer when the index stays above MA lines that are meeting, and the volume increased gradually, showing that the demand is improving, showing chance of breaking peak around 235. If there is sign of successful break out, it will confirm mid-term gaining trend and target might be 247-255.

HNX-Index



In general, both indexes saw a positive final week of the year, seeing higher chance of breaking peak and returning to mid-term gaining trend. General strategy might be returning gradually with low weight and utilizing short-term correction (if any) to raise the weight. Having priority on strong groups like Industrial Park, Steel, Technology, Oil, Viettel, Pig farming, Securities, Real estate, and Power.

MARKET STATISTICS**TOP 5 IN MATCHING VOLUME**

HOSE			
Ticker	Closing (VND)	Change %	Volume (share)
HPG	27,950	3.33%	125,826,078
HAG	13,200	-2.22%	124,670,045
VND	22,250	3.49%	87,917,792
VIX	17,100	2.40%	84,930,825
GEX	23,600	3.96%	84,174,570

HNX			
Ticker	Closing (VND)	Change %	Volume (share)
SHS	18,900	2.16%	62,954,193
CEO	22,700	0.00%	37,239,410
HUT	20,200	4.12%	21,116,088
MBS	22,700	0.44%	13,680,539
PVS	38,000	-0.78%	13,345,783

TOP 5 IN MATCHING VALUE

HOSE			
Ticker	Closing (VND)	Change %	Value (bil. VND)
HPG	27,950	3.33%	3,493.4
SSI	32,800	1.39%	2,220.9
DIG	26,750	3.68%	2,021.8
GEX	23,600	3.96%	1,968.3
VND	22,250	3.49%	1,937.2

HNX			
Ticker	Closing (VND)	Change %	Value (bil. VND)
SHS	18,900	2.16%	1,182.9
CEO	22,700	0.00%	852.6
IDC	52,100	1.96%	550.9
PVS	38,000	-0.78%	516.0
HUT	20,200	4.12%	420.9

STATISTICS ON THE IMPACT ON THE INDEX**TOP 5 GAINING IMPACT**

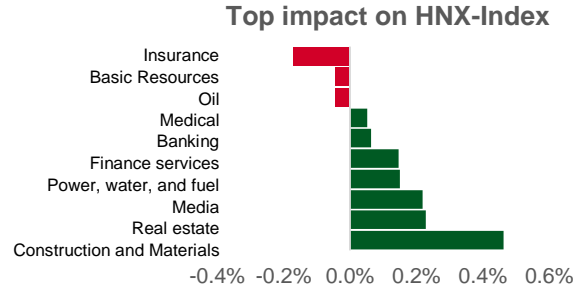
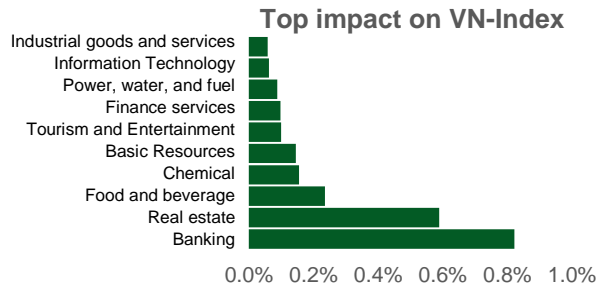
HOSE			
Ticker	Closing (VND)	Change %	Impact %
VHM	43,200	7.20%	0.28%
VPB	19,200	5.79%	0.19%
MSN	67,000	6.35%	0.13%
VIC	44,600	3.36%	0.12%
BID	43,400	2.24%	0.12%

HNX			
Ticker	Closing (VND)	Change %	Impact %
HUT	20,200	4.12%	0.23%
HTP	24,100	40.12%	0.21%
NTP	39,500	7.92%	0.12%
DTK	11,000	4.76%	0.11%
IDC	52,100	1.96%	0.11%

TOP 5 DROPPING IMPACT

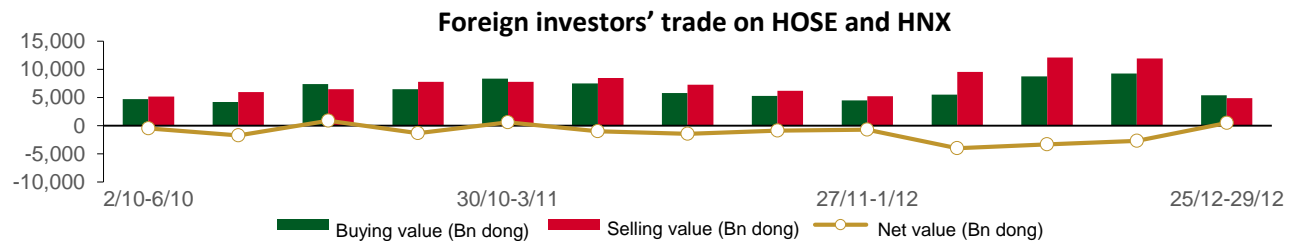
HOSE			
Ticker	Closing (VND)	Change %	Impact %
VCB	80,300	-0.74%	-0.08%
LGC	51,200	-6.91%	-0.02%
HDG	27,600	-5.15%	-0.01%
HAG	13,200	-2.22%	-0.01%
QCG	10,050	-6.94%	0.00%

HNX			
Ticker	Closing (VND)	Change %	Impact %
PTI	36,700	-13.65%	-0.15%
PVS	38,000	-0.78%	-0.05%
VIF	17,300	-2.26%	-0.05%
HGM	36,000	-23.40%	-0.04%
VNT	33,600	-14.07%	-0.03%



STATISTICS ON FOREIGN INVESTORS' TRADE

Exchange	Buying vol. (mil. share)	Buying value (bil. VND)	Selling vol. (mil. share)	Selling value (bil. VND)	Net selling/ buying value (mil. share)	Net selling/ buying value (bil. VND)
HOSE	195.02	5,251.78	180.17	4,784.09	14.86	467.69
HNX	5.64	129.06	5.27	114.39	0.37	14.66
Total	200.66	5,380.83	185.43	4,898.48	15.23	482.35



TOP 5 BOUGHT-IN

HOSE			
Ticker	Closing (VND)	Buying vol. (share)	Buying value (bil. VND)
HCM	34,200	3,428,328	115.13
VCB	80,300	969,755	80.86
HSG	22,800	3,508,666	79.65
PVD	28,300	2,359,452	66.57
STB	27,950	2,394,210	66.23

HNX			
Ticker	Closing (VND)	Buying vol. (share)	Buying value (bil. VND)
IDC	52,100	616,155	31.93
TNG	20,000	240,272	4.87
SHS	18,900	199,324	4.84
NRC	4,800	190,000	0.93
VGS	23,100	29,702	0.69

TOP 5 SOLD-OUT

HOSE			
Ticker	Closing (VND)	Buying vol. (share)	Buying value (bil. VND)
GMD	70,500	(2,426,625)	(174.19)
VNM	67,600	(2,549,469)	(173.31)
GAS	75,500	(1,006,506)	(76.22)
SSI	32,800	(2,221,695)	(72.51)
SHB	10,800	(6,591,991)	(71.05)

HNX			
Ticker	Closing (VND)	Buying vol. (share)	Buying value (bil. VND)
PVS	38,000	(418,147)	(16.15)
CEO	22,700	(216,500)	(4.96)
VCS	55,000	(60,710)	(3.33)
NVB	10,500	(128,900)	(1.37)
TIG	12,500	(101,400)	(1.24)

Analyst Certification

The report is made by Pham Quang Chuong, analyst – Phu Hung Securities Joint Stock Company. Each research analyst(s), strategist(s) or research associate(s) responsible for the preparation and content of all or any identified portion of this research report hereby certifies that, with respect to each issuer or security or any identified portion of the report with respect to each issuer or security that the research analyst, strategist or research associate covers in this research report, all of the views expressed by that research analyst, strategist or research associate in this research report accurately reflect their personal views about those issuer(s) or securities. Each research analyst(s), strategist(s) or research associate(s) also certify that no part of their compensation was, is, or will be, directly or indirectly, related to the specific recommendation(s) or view(s) expressed by that research analyst, strategist or research associate in this research report.

Ratings Definition

Buy = higher than domestic market by over 10%
Hold = similar to domestic market at the rate of +10% ~ -10%
Sell = lower than domestic market by below 10%
No rating = the code is not rated in Phu Hung or not yet listed
The performance is determined by total recollection in 12 months (including dividend).

Analyst Certification

This information has been compiled from sources we believe to be reliable, but we do not hold ourselves responsible for its completeness or accuracy. It is not an offer to sell or solicitation of an offer to buy any securities. Phu Hung Securities and its affiliates and their officers and employees may or may not have a position in or with respect to the securities mentioned herein. Phu Hung Securities (or one of its affiliates) may from time to time perform investment banking or other services or solicit investment banking or other business for any company mentioned in this report. All opinions and estimates included in this report constitute our judgment as of this date and are subject to change without notice.

© Phu Hung Securities Corporation

F21, Phu My Hung Tower, 08 Hoang Van Thai, Tan Phu Ward, District 7, HCMC
Phone: (84-28) 5 413 5479 Fax: (84-28) 5 413 5472
Customer Service: 1900 25 23 58 Call Center: (84-28) 5 413 5488
E-mail: info@phs.vn / support@phs.vn Web: www.phs.vn

Phu My Hung Trading office

CR2-08 building, 107 Ton Dat
Tien, Tan Phu Ward, District 7,
HCMC
Tel: (84-28) 5 413 5478
Fax: (84-28) 5 413 5473

District 3 Branch

F4-5, D&D Tower,
458 Nguyen Thi Minh Khai,
Ward 2, District 3, HCMC
Tel: (84-28) 3 820 8068
Fax: (84-28) 3 820 8206

Thanh Xuan Branch

F5, UDIC Complex, N04 Hoang Dao
Thuy, Trung Hoa Ward, Cau Giay
District, Hanoi
Tel: (84-24) 6 250 9999
Fax: (84-24) 6 250 6666

Tan Binh Branch

Park Legend Building
251 Hoang Van Thu, Ward 2, Tan
Binh District, HCMC
Tel: (84-28) 3 813 2401
Fax: (84-28) 3 813 2415

Hanoi Branch

F5, Vinafor Tower, 127 Lo
Duc, Hai Ba Trung District,
Hanoi
Tel: (84-24) 3 933 4566
Fax: (84-24) 3 933 4820

Hai Phong Branch

F2, Eliteco Building, Tran Hung Dao,
Hong Bang District, Hai Phong
Tel: (84-225) 384 1810
Fax: (84-225) 384 1801

District 1 Branch

No 1003A, F10, Ruby Tower, 81-
83-83B-85 Ham Nghi, Nguyen
Thai Binh Ward, District 1, HCMC
Tel: ((84-28) 3 535 6060
Fax: (84-28) 3 535 2912