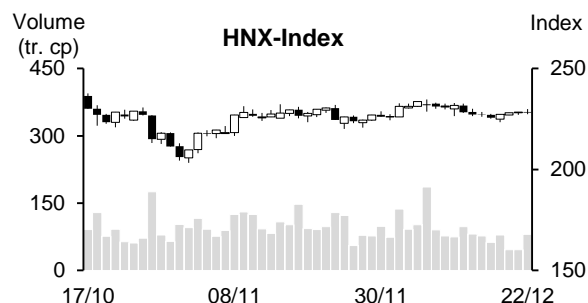
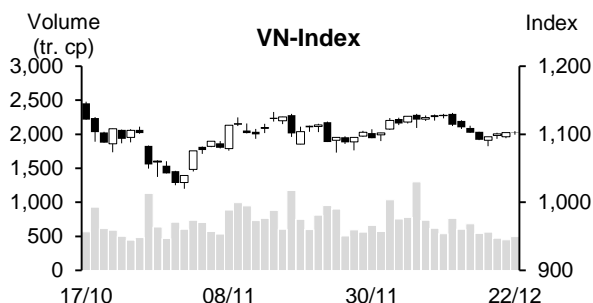


| Day | Monday 18/12 | Tuesday 19/12 | Wednesday 20/12 | Thursday 21/12 | Friday 22/12 | Average |
|-------------------------------|-----------------|------------------|--------------------|-------------------|-----------------|-----------|
| VN-Index | 1,091.88 | 1,096.30 | 1,100.76 | 1,102.43 | 1,103.06 | 1,098.89 |
| Change +/- | -10.42 | 4.42 | 4.46 | 1.67 | 0.63 | 0.15 |
| Change % | -0.95% | 0.40% | 0.41% | 0.15% | 0.06% | 0.01% |
| Matched volume (mil. shares) | 544.47 | 561.33 | 470.63 | 451.55 | 496.45 | 504.88 |
| Matched value (bil. Dong) | 10,473.17 | 10,883.19 | 9,588.37 | 9,702.89 | 10,629.95 | 10,255.51 |
| Foreign net trade (bil. Dong) | -770.69 | -466.00 | -412.37 | -534.12 | -506.76 | -537.99 |
| VN30 | 1,084.67 | 1,091.87 | 1,097.01 | 1,097.43 | 1,097.45 | 1,093.69 |
| Change +/- | -12.73 | 7.20 | 5.14 | 0.42 | 0.02 | 0.01 |
| Change % | -1.16% | 0.66% | 0.47% | 0.04% | 0.00% | 0.00% |
| Matched volume (mil. shares) | 150.88 | 147.51 | 117.10 | 107.81 | 138.31 | 132.32 |
| Matched value (bil. Dong) | 4,226.18 | 4,152.48 | 3,606.05 | 3,225.47 | 3,958.87 | 3,833.81 |
| Foreign net trade (bil. Dong) | -374.44 | -301.64 | -150.98 | -307.38 | -346.84 | -296.26 |
| HNX-Index | 225.73 | 227.27 | 228.16 | 228.48 | 228.27 | 227.58 |
| Change +/- | -1.29 | 1.54 | 0.89 | 0.32 | -0.21 | 0.25 |
| Change % | -0.57% | 0.68% | 0.39% | 0.14% | -0.09% | 0.11% |
| Matched volume (mil. shares) | 62.54 | 78.81 | 46.04 | 46.25 | 80.37 | 62.80 |
| Matched value (bil. Dong) | 1,023.89 | 1,361.45 | 885.87 | 825.89 | 1,548.97 | 1,129.21 |
| Foreign net trade (bil. Dong) | 15.59 | 1.38 | 0.50 | -7.51 | 8.39 | 3.67 |



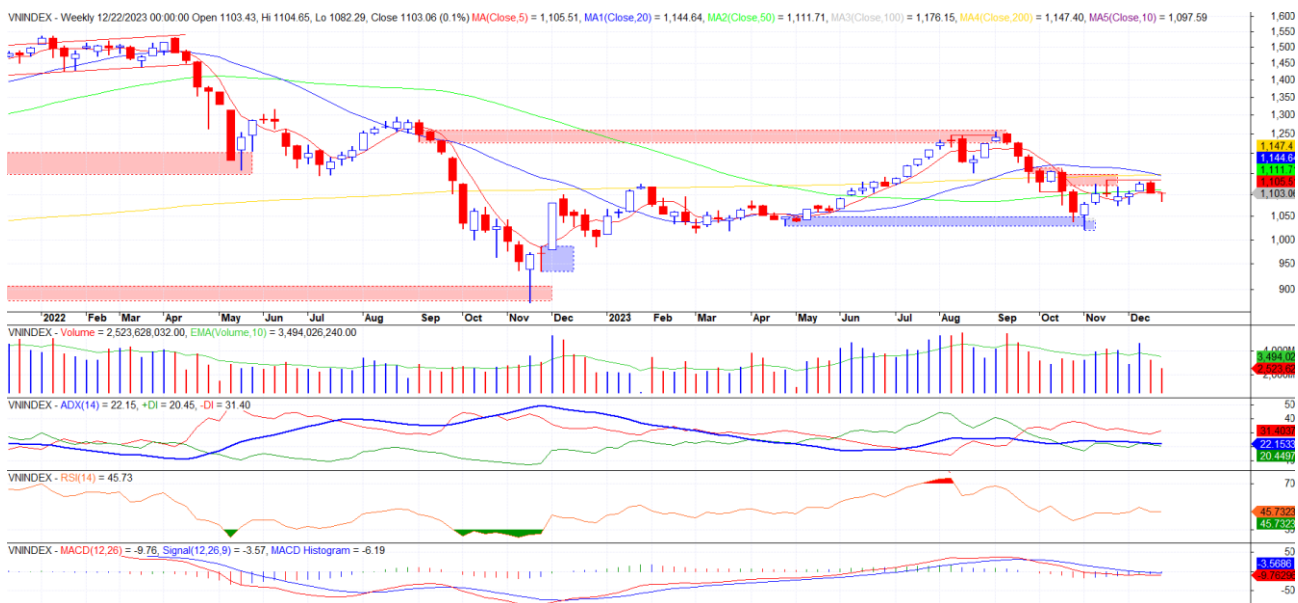
REMARKABLE POINTS ON THE MARKET

The market struggled with a strong drop at the beginning before recovering again in 4 following sessions. However, the gain in recovering sessions wasn't remarkable with strong differentiation among pillar groups. Cautiousness was the main theme as the liquidity was low during the week. Remarkably, this is the lowest week-liquidity in the last 7 months. Along with it, foreign investors still saw strong net selling so it is hard for the market to break out.

TECHNICAL POINT OF VIEW

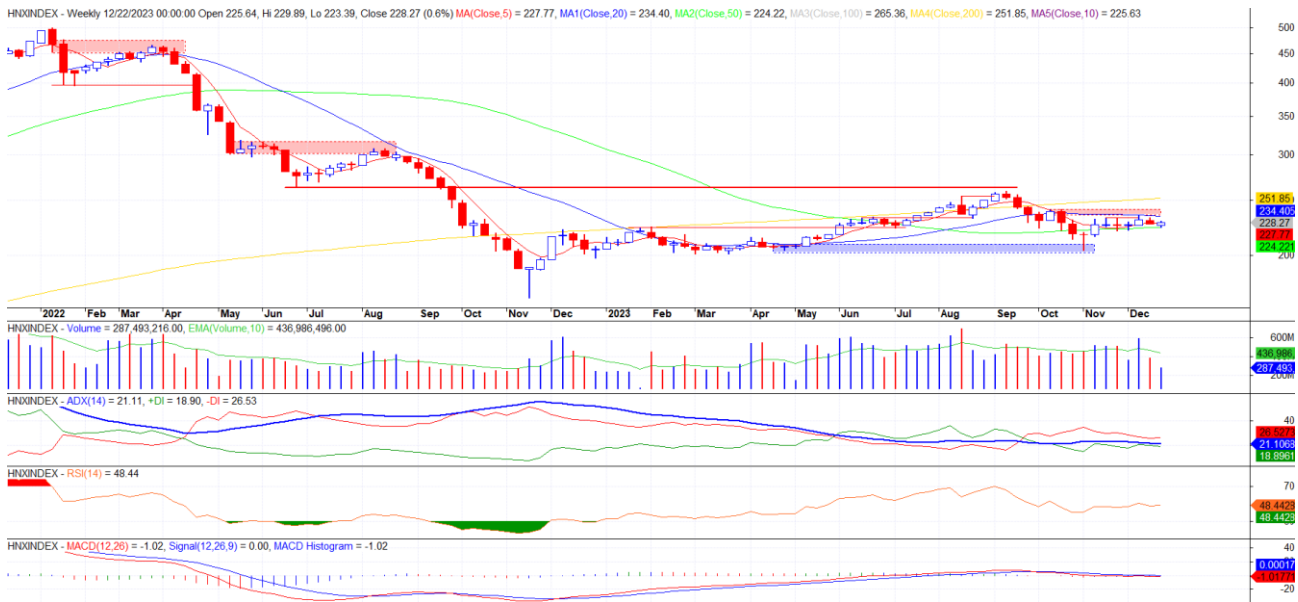
VN-Index gained slightly again when dropping to old bottom of 1,080-1,088, however, the demand in recovering sessions wasn't strong. At the end of the week, the volume increased slightly again but was still below average, so the sign didn't get much better. We think that it is necessary to observe the demand in the first half of this week. If there is a positive gain with strong demand like December 4, it might recover further to old peak of 1,132; but if the demand is still weak, it might see resistant at 1,180-1,120 and drop again, if there is a strong selling, bottom level of 1,080-1,088 is not likely to be maintained, and the index might move to 1,020-1,040. We think the chance is higher than the demand will not improve in the final week of the year.

VN-Index



HNX-Index also gained slightly again, sideways trend is still there. In more detail, on daily chart, the index saw recoveries when moving to old bottom of 220-224, but similar to VN-Index, the demand was weak. In the last session of the week, there was a head-withdraw candle with highly increasing volume, showing sign of the selling returning. If there is a thick dropping candle, it might drop again, if such session also sees strong selling pressure, bottom level of 220-224 can hardly be maintained, and the index will drop to 203-210.

HNX-Index



In general, both indexes dropped to bottom level at the end of November and recovered last week, but the demand was weak, so it might drop again in the final week of the year. General strategy is keeping a low weight, not rushing to join back in.

MARKET STATISTICS**TOP 5 IN MATCHING VOLUME**

| HOSE | | | |
|--------|------------------|-------------|-------------------|
| Ticker | Closing (VND) | Change % | Volume (share) |
| HAG | 13,500 | 3.45% | 121,403,558 |
| HPG | 27,050 | 0.93% | 84,799,376 |
| STB | 27,200 | 0.37% | 80,491,301 |
| VND | 21,500 | -1.38% | 76,553,825 |
| VIX | 16,700 | 1.21% | 76,210,194 |

| HNX | | | |
|--------|------------------|-------------|-------------------|
| Ticker | Closing (VND) | Change % | Volume (share) |
| SHS | 18,500 | 0.00% | 84,158,900 |
| CEO | 22,700 | -0.44% | 36,593,931 |
| HUT | 19,400 | -0.51% | 16,803,865 |
| TIG | 11,900 | -7.75% | 16,781,936 |
| MBS | 22,600 | 0.00% | 16,702,421 |

TOP 5 IN MATCHING VALUE

| HOSE | | | |
|--------|------------------|-------------|---------------------|
| Ticker | Closing (VND) | Change % | Value (bil. VND) |
| HPG | 27,050 | 0.93% | 2,291.9 |
| STB | 27,200 | 0.37% | 2,146.0 |
| SSI | 32,350 | 1.73% | 2,123.9 |
| VND | 21,500 | -1.38% | 1,665.5 |
| MWG | 42,350 | 3.93% | 1,661.9 |

| HNX | | | |
|--------|------------------|-------------|---------------------|
| Ticker | Closing (VND) | Change % | Value (bil. VND) |
| SHS | 18,500 | 0.00% | 1,570.3 |
| CEO | 22,700 | -0.44% | 823.6 |
| IDC | 51,100 | 1.19% | 475.9 |
| PVS | 38,300 | 2.13% | 425.5 |
| MBS | 22,600 | 0.00% | 380.9 |

STATISTICS ON THE IMPACT ON THE INDEX**TOP 5 GAINING IMPACT**

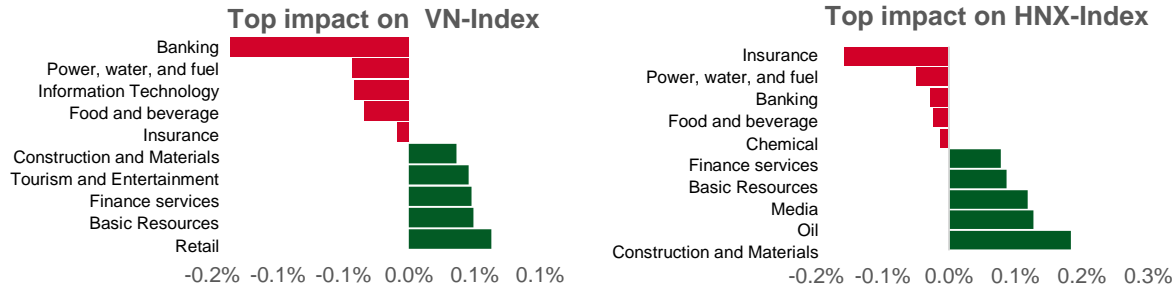
| HOSE | | | |
|--------|------------------|-------------|-------------|
| Ticker | Closing (VND) | Change % | Impact % |
| BID | 42,450 | 2.29% | 0.12% |
| MWG | 42,350 | 3.93% | 0.05% |
| ACB | 23,200 | 1.98% | 0.04% |
| VHM | 40,300 | 1.00% | 0.04% |
| VJC | 106,200 | 3.11% | 0.04% |

| HNX | | | |
|--------|------------------|-------------|-------------|
| Ticker | Closing (VND) | Change % | Impact % |
| HTP | 17,200 | 32.31% | 0.13% |
| PVS | 38,300 | 2.13% | 0.13% |
| VIF | 17,700 | 4.12% | 0.08% |
| IPA | 16,300 | 6.54% | 0.07% |
| IDC | 51,100 | 1.19% | 0.07% |

TOP 5 DROPPING IMPACT

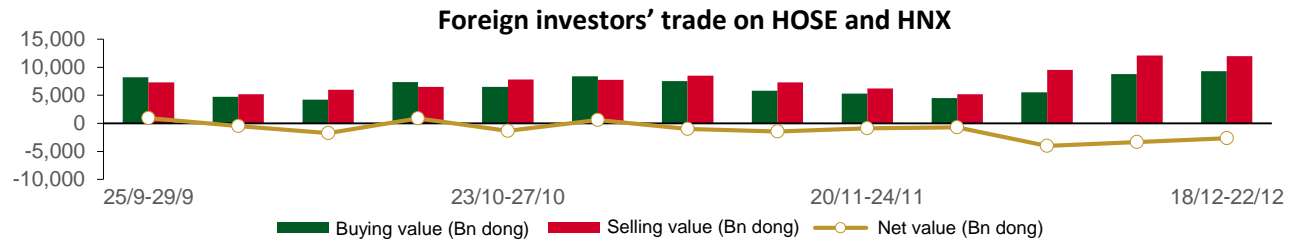
| HOSE | | | |
|--------|------------------|-------------|-------------|
| Ticker | Closing (VND) | Change % | Impact % |
| VCB | 80,900 | -1.58% | -0.16% |
| VPB | 18,150 | -2.94% | -0.10% |
| GAS | 74,700 | -1.71% | -0.07% |
| VIC | 43,150 | -1.26% | -0.05% |
| FPT | 94,600 | -1.66% | -0.05% |

| HNX | | | |
|--------|------------------|-------------|-------------|
| Ticker | Closing (VND) | Change % | Impact % |
| PTI | 42,500 | -11.46% | -0.15% |
| DTK | 10,500 | -5.41% | -0.13% |
| TIG | 11,900 | -7.75% | -0.06% |
| VNT | 39,100 | -13.30% | -0.03% |
| KSF | 41,000 | -0.73% | -0.03% |



STATISTICS ON FOREIGN INVESTORS' TRADE

| Exchange | Buying vol. (mil. share) | Buying value (bil. VND) | Selling vol. (mil. share) | Selling value (bil. VND) | Net selling/ buying value (mil. share) | Net selling/ buying value (bil. VND) |
|--------------|--------------------------|-------------------------|---------------------------|--------------------------|--|--------------------------------------|
| HOSE | 315.26 | 9,063.10 | 418.31 | 11,753.03 | (103.05) | (2,689.94) |
| HNX | 5.03 | 215.90 | 5.80 | 197.56 | (0.77) | 18.35 |
| Total | 320.29 | 9,279.00 | 424.11 | 11,950.59 | (103.82) | (2,671.59) |



TOP 5 BOUGHT-IN

| HOSE | | | |
|--------|---------------|---------------------|-------------------------|
| Ticker | Closing (VND) | Buying vol. (share) | Buying value (bil. VND) |
| MWG | 42,350 | 4,654,436 | 195.38 |
| FTS | 44,000 | 924,489 | 40.27 |
| HDG | 29,100 | 1,132,017 | 32.41 |
| NLG | 36,700 | 737,058 | 26.82 |
| VRE | 22,950 | 1,151,053 | 26.13 |

| HNX | | | |
|--------|---------------|---------------------|-------------------------|
| Ticker | Closing (VND) | Buying vol. (share) | Buying value (bil. VND) |
| IDC | 51,100 | 1,492,200 | 75.31 |
| TNG | 19,700 | 282,416 | 5.60 |
| PVI | 44,700 | 54,600 | 2.46 |
| NRC | 4,700 | 228,183 | 1.08 |
| MBS | 22,600 | 32,160 | 0.74 |

TOP 5 SOLD-OUT

| HOSE | | | |
|--------|---------------|---------------------|-------------------------|
| Ticker | Closing (VND) | Buying vol. (share) | Buying value (bil. VND) |
| HPG | 27,050 | (13,042,543) | (353.95) |
| EIB | 18,300 | (14,655,492) | (276.23) |
| VNM | 67,600 | (3,381,768) | (227.29) |
| STB | 27,200 | (8,391,400) | (222.36) |
| SSI | 32,350 | (5,725,303) | (183.10) |

| HNX | | | |
|--------|---------------|---------------------|-------------------------|
| Ticker | Closing (VND) | Buying vol. (share) | Buying value (bil. VND) |
| PVS | 38,300 | (590,200) | (22.34) |
| CEO | 22,700 | (856,451) | (19.29) |
| SHS | 18,500 | (850,696) | (15.91) |
| BVS | 25,100 | (100,900) | (2.53) |
| TIG | 11,900 | (119,400) | (1.43) |

Analyst Certification

The report is made by Pham Quang Chuong, analyst – Phu Hung Securities Joint Stock Company. Each research analyst(s), strategist(s) or research associate(s) responsible for the preparation and content of all or any identified portion of this research report hereby certifies that, with respect to each issuer or security or any identified portion of the report with respect to each issuer or security that the research analyst, strategist or research associate covers in this research report, all of the views expressed by that research analyst, strategist or research associate in this research report accurately reflect their personal views about those issuer(s) or securities. Each research analyst(s), strategist(s) or research associate(s) also certify that no part of their compensation was, is, or will be, directly or indirectly, related to the specific recommendation(s) or view(s) expressed by that research analyst, strategist or research associate in this research report.

Ratings Definition

Buy = higher than domestic market by over 10%
Hold = similar to domestic market at the rate of +10% ~ -10%
Sell = lower than domestic market by below 10%
No rating = the code is not rated in Phu Hung or not yet listed
The performance is determined by total recollection in 12 months (including dividend).

Analyst Certification

This information has been compiled from sources we believe to be reliable, but we do not hold ourselves responsible for its completeness or accuracy. It is not an offer to sell or solicitation of an offer to buy any securities. Phu Hung Securities and its affiliates and their officers and employees may or may not have a position in or with respect to the securities mentioned herein. Phu Hung Securities (or one of its affiliates) may from time to time perform investment banking or other services or solicit investment banking or other business for any company mentioned in this report. All opinions and estimates included in this report constitute our judgment as of this date and are subject to change without notice.

© Phu Hung Securities Corporation

F21, Phu My Hung Tower, 08 Hoang Van Thai, Tan Phu Ward, District 7, HCMC
Phone: (84-28) 5 413 5479 Fax: (84-28) 5 413 5472
Customer Service: 1900 25 23 58 Call Center: (84-28) 5 413 5488
E-mail: info@phs.vn / support@phs.vn Web: www.phs.vn

Phu My Hung Trading office

CR2-08 building, 107 Ton Dat
Tien, Tan Phu Ward, District 7,
HCMC
Tel: (84-28) 5 413 5478
Fax: (84-28) 5 413 5473

District 3 Branch

F4-5, D&D Tower,
458 Nguyen Thi Minh Khai,
Ward 2, District 3, HCMC
Tel: (84-28) 3 820 8068
Fax: (84-28) 3 820 8206

Thanh Xuan Branch

F5, UDIC Complex, N04 Hoang Dao
Thuy, Trung Hoa Ward, Cau Giay
District, Hanoi
Tel: (84-24) 6 250 9999
Fax: (84-24) 6 250 6666

Tan Binh Branch

Park Legend Building
251 Hoang Van Thu, Ward 2, Tan
Binh District, HCMC
Tel: (84-28) 3 813 2401
Fax: (84-28) 3 813 2415

Hanoi Branch

F5, Vinafor Tower, 127 Lo
Duc, Hai Ba Trung District,
Hanoi
Tel: (84-24) 3 933 4566
Fax: (84-24) 3 933 4820

Hai Phong Branch

F2, Eliteco Building, Tran Hung Dao,
Hong Bang District, Hai Phong
Tel: (84-225) 384 1810
Fax: (84-225) 384 1801

District 1 Branch

No 1003A, F10, Ruby Tower, 81-
83-83B-85 Ham Nghi, Nguyen
Thai Binh Ward, District 1, HCMC
Tel: ((84-28) 3 535 6060
Fax: (84-28) 3 535 2912