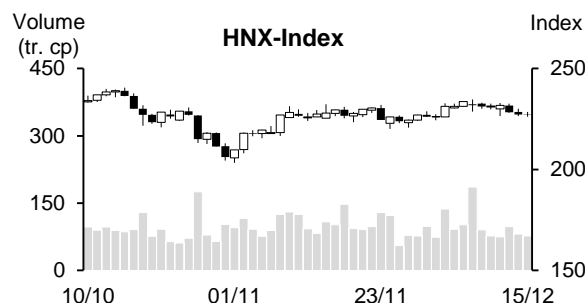
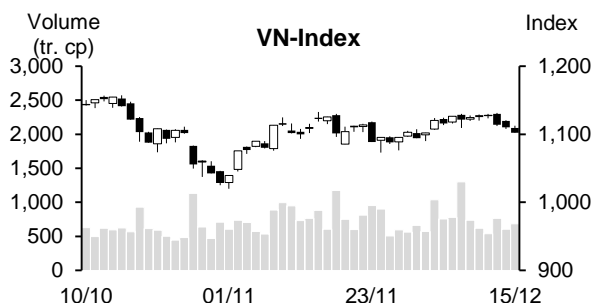


Day	Monday 11/12	Tuesday 12/12	Wednesday 13/12	Thursday 14/12	Friday 15/12	Average
VN-Index	1,125.50	1,127.63	1,114.20	1,110.13	1,102.30	1,115.95
Change +/-	1.06	2.13	-13.43	-4.07	-7.83	-4.43
Change %	0.09%	0.19%	-1.19%	-0.37%	-0.71%	-0.40%
Matched volume (mil. shares)	618.51	539.36	764.19	604.10	684.61	642.15
Matched value (bil. Dong)	12,546.38	11,218.61	16,191.52	12,155.78	14,170.68	13,256.59
Foreign net trade (bil. Dong)	-433.39	-308.64	-915.28	-358.20	-1,468.11	-696.72
VN30	1,117.34	1,121.21	1,106.83	1,104.49	1,097.40	1,109.45
Change +/-	2.45	3.87	-14.38	-2.34	-7.09	-3.50
Change %	0.22%	0.35%	-1.28%	-0.21%	-0.64%	-0.31%
Matched volume (mil. shares)	149.57	141.93	190.72	155.45	180.91	163.72
Matched value (bil. Dong)	4,511.65	4,284.36	5,718.31	4,270.29	5,306.30	4,818.18
Foreign net trade (bil. Dong)	-260.98	-211.37	-500.10	-131.54	-1,032.65	-427.33
HNX-Index	231.37	231.71	228.42	227.23	227.02	229.15
Change +/-	0.17	0.34	-3.29	-1.19	-0.21	-0.84
Change %	0.07%	0.15%	-1.42%	-0.52%	-0.09%	-0.36%
Matched volume (mil. shares)	76.71	74.62	97.58	81.37	76.85	81.42
Matched value (bil. Dong)	1,518.94	1,408.52	2,046.69	1,598.22	1,538.82	1,622.24
Foreign net trade (bil. Dong)	40.78	41.23	61.56	35.14	-23.94	30.95



### REMARKABLE POINTS ON THE MARKET

The market dropped again negatively and the drop focused mostly on the last few sessions. Foreign investors still sold while the liquidity dropped remarkably from last week, showing that the market saw a lack of support. Even when world stock market supported the gaining trend while Fed showed sign of the interest rate slowing down, Vietnam stock market wasn't positive either. Other than information technology under the lead of FPT, most other pillars closed in red. In which, banking, food and beverage, and real estate were the main reason for the drop.

### TECHNICAL POINT OF VIEW

VN-Index dropped again as it couldn't surpass peak around 1,132, losing all points claimed last week, forming Bearish Engulfing candles. On daily chart, the sign closed below MA50 that is dropping. In general, all these signs supported that short-term gain to 1,132 points has ended, and the index is starting a new dropping trend. We think that at least the index will move to bottom of 1,080-1,088 points, if there is another strong selling session, this bottom might be hard to maintain, it might drop to demand level of 1,020-1,040. After the last session of the week, overselling share rate is increasing, so it might recover in the first half of the week. It is expected to see a light recovery with weak demand and then drop again.

### VN-Index



HNX-Index also dropped again with another head-withdraw candle. On daily chart, the index escaped struggling status around old peak off 232 with head-withdraw candle. Selling pressure is not too strong, currently it is at demand level of 224-227, and might recover again. Similar to VN-Index, there will only be light recoveries with weak demand and will return to dropping trend. If there is a strong selling, bottom level of 220-222 will be hard to maintain, then, it might drop to demand level of 203-210.

### HNX-Index



In general, the sign on both indexes showed that selling pressure is returning around old peak level, might end short-term gain and start a new dropping trend. At least it will move to bottom level at the end of November; if selling pressure showed stronger sign, the drop might last longer. General strategy is maintaining a low weight, not rushing to join.

**MARKET STATISTICS****TOP 5 IN MATCHING VOLUME**

HOSE			
Ticker	Closing (VND)	Change %	Volume (share)
HPG	26,800	-3.25%	149,380,825
VIX	16,500	-4.07%	130,088,211
HAG	13,050	7.41%	123,038,317
VND	21,800	0.46%	117,983,964
NVL	16,900	-3.98%	115,246,130

HNX			
Ticker	Closing (VND)	Change %	Volume (share)
SHS	18,500	0.00%	88,054,733
CEO	22,800	-2.56%	73,291,327
HUT	19,500	-6.70%	34,759,558
PVS	37,500	-3.35%	22,108,913
MBS	22,600	2.73%	18,072,115

**TOP 5 IN MATCHING VALUE**

HOSE			
Ticker	Closing (VND)	Change %	Value (bil. VND)
HPG	26,800	-3.25%	4,107.7
SSI	31,800	-2.45%	2,897.6
VND	21,800	0.46%	2,574.2
VIX	16,500	-4.07%	2,186.7
DIG	25,200	-5.79%	2,022.3

HNX			
Ticker	Closing (VND)	Change %	Value (bil. VND)
CEO	22,800	-2.56%	1,708.4
SHS	18,500	0.00%	1,623.6
PVS	37,500	-3.35%	850.2
IDC	50,500	1.20%	831.4
HUT	19,500	-6.70%	711.2

**STATISTICS ON THE IMPACT ON THE INDEX****TOP 5 GAINING IMPACT**

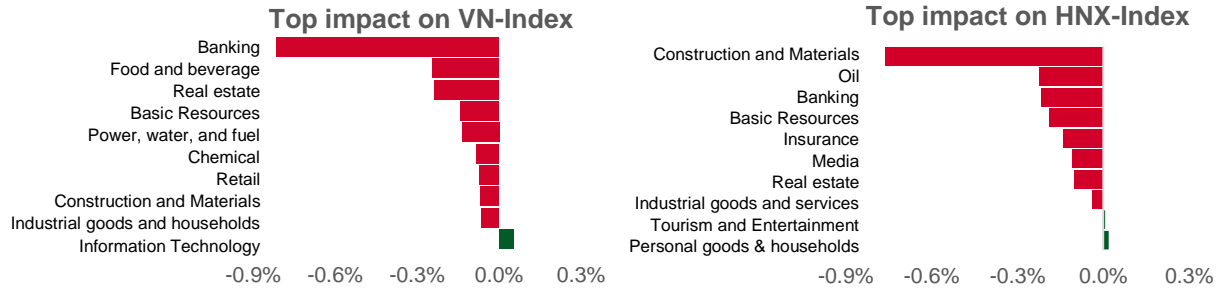
HOSE			
Ticker	Closing (VND)	Change %	Impact %
VIC	43,700	1.75%	0.06%
FPT	96,200	2.12%	0.06%
ACB	22,750	1.56%	0.03%
VHM	39,900	0.63%	0.02%
HAG	13,050	7.41%	0.02%

HNX			
Ticker	Closing (VND)	Change %	Impact %
MBS	22,600	2.73%	0.08%
IDC	50,500	1.20%	0.06%
TIG	12,900	4.03%	0.03%
TNG	19,600	3.16%	0.02%
SCG	65,100	0.93%	0.02%

**TOP 5 DROPPING IMPACT**

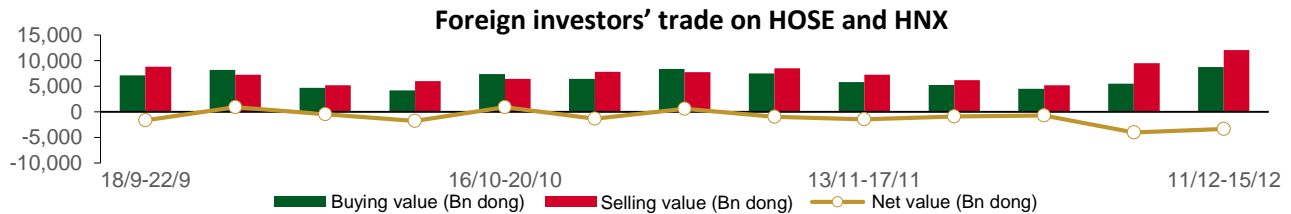
HOSE			
Ticker	Closing (VND)	Change %	Impact %
VCB	82,200	-3.29%	-0.35%
VPB	18,700	-4.59%	-0.16%
HPG	26,800	-3.25%	-0.12%
MSN	63,000	-4.83%	-0.10%
GAS	76,000	-2.06%	-0.08%

HNX			
Ticker	Closing (VND)	Change %	Impact %
HUT	19,500	-6.70%	-0.40%
PVS	37,500	-3.35%	-0.20%
NVB	10,300	-8.04%	-0.16%
PTI	48,000	-7.69%	-0.10%
VCS	54,500	-3.54%	-0.10%



**STATISTICS ON FOREIGN INVESTORS' TRADE**

Exchange	Buying vol. (mil. share)	Buying value (bil. VND)	Selling vol. (mil. share)	Selling value (bil. VND)	Net selling/ buying value (mil. share)	Net selling/ buying value (bil. VND)
HOSE	280.19	8,146.51	408.09	11,630.13	(127.90)	(3,483.62)
HNX	22.68	614.03	19.36	459.27	3.33	154.77
<b>Total</b>	<b>302.87</b>	<b>8,760.54</b>	<b>427.45</b>	<b>12,089.40</b>	<b>(124.57)</b>	<b>(3,328.85)</b>



**TOP 5 BOUGHT-IN**

HOSE			
Ticker	Closing (VND)	Buying vol. (share)	Buying value (bil. VND)
VND	21,800	10,047,001	220.09
NVL	16,900	7,892,215	134.19
NKG	23,250	1,813,939	41.89
CMG	39,000	777,252	30.24
BCM	62,000	350,500	21.09

HNX			
Ticker	Closing (VND)	Buying vol. (share)	Buying value (bil. VND)
CEO	22,800	6,341,599	146.94
IDC	50,500	2,662,855	136.76
LAS	14,400	321,400	4.75
IPA	15,300	112,200	1.76
NTP	36,100	22,683	0.84

**TOP 5 SOLD-OUT**

HOSE			
Ticker	Closing (VND)	Buying vol. (share)	Buying value (bil. VND)
FUEVFVND	25,320	(16,440,220)	(418.23)
HPG	26,800	(13,621,695)	(368.00)
VCB	82,200	(3,082,945)	(264.72)
STB	27,100	(9,511,200)	(262.94)
VNM	68,100	(3,791,868)	(261.33)

HNX			
Ticker	Closing (VND)	Buying vol. (share)	Buying value (bil. VND)
SHS	18,500	(3,089,959)	(56.96)
PVS	37,500	(961,561)	(35.92)
HUT	19,500	(1,636,500)	(32.11)
DHT	22,200	(172,700)	(3.86)
BVS	25,100	(60,600)	(1.53)

### **Analyst Certification**

The report is made by Pham Quang Chuong, analyst – Phu Hung Securities Joint Stock Company. Each research analyst(s), strategist(s) or research associate(s) responsible for the preparation and content of all or any identified portion of this research report hereby certifies that, with respect to each issuer or security or any identified portion of the report with respect to each issuer or security that the research analyst, strategist or research associate covers in this research report, all of the views expressed by that research analyst, strategist or research associate in this research report accurately reflect their personal views about those issuer(s) or securities. Each research analyst(s), strategist(s) or research associate(s) also certify that no part of their compensation was, is, or will be, directly or indirectly, related to the specific recommendation(s) or view(s) expressed by that research analyst, strategist or research associate in this research report.

### **Ratings Definition**

Buy = higher than domestic market by over 10%  
Hold = similar to domestic market at the rate of +10% ~ -10%  
Sell = lower than domestic market by below 10%  
No rating = the code is not rated in Phu Hung or not yet listed  
The performance is determined by total recollection in 12 months (including dividend).

### **Analyst Certification**

This information has been compiled from sources we believe to be reliable, but we do not hold ourselves responsible for its completeness or accuracy. It is not an offer to sell or solicitation of an offer to buy any securities. Phu Hung Securities and its affiliates and their officers and employees may or may not have a position in or with respect to the securities mentioned herein. Phu Hung Securities (or one of its affiliates) may from time to time perform investment banking or other services or solicit investment banking or other business for any company mentioned in this report. All opinions and estimates included in this report constitute our judgment as of this date and are subject to change without notice.

#### **© Phu Hung Securities Corporation**

F21, Phu My Hung Tower, 08 Hoang Van Thai, Tan Phu Ward, District 7, HCMC  
Phone: (84-28) 5 413 5479 Fax: (84-28) 5 413 5472  
Customer Service: 1900 25 23 58 Call Center: (84-28) 5 413 5488  
E-mail: [info@phs.vn](mailto:info@phs.vn) / [support@phs.vn](mailto:support@phs.vn) Web: [www.phs.vn](http://www.phs.vn)

#### **Phu My Hung Trading office**

CR2-08 building, 107 Ton Dat  
Tien, Tan Phu Ward, District 7,  
HCMC  
Tel: (84-28) 5 413 5478  
Fax: (84-28) 5 413 5473

#### **District 3 Branch**

F4-5, D&D Tower,  
458 Nguyen Thi Minh Khai,  
Ward 2, District 3, HCMC  
Tel: (84-28) 3 820 8068  
Fax: (84-28) 3 820 8206

#### **Thanh Xuan Branch**

F5, UDIC Complex, N04 Hoang Dao  
Thuy, Trung Hoa Ward, Cau Giay  
District, Hanoi  
Tel: (84-24) 6 250 9999  
Fax: (84-24) 6 250 6666

#### **Tan Binh Branch**

Park Legend Building  
251 Hoang Van Thu, Ward 2, Tan  
Binh District, HCMC  
Tel: (84-28) 3 813 2401  
Fax: (84-28) 3 813 2415

#### **Hanoi Branch**

F5, Vinafor Tower, 127 Lo  
Duc, Hai Ba Trung District,  
Hanoi  
Tel: (84-24) 3 933 4566  
Fax: (84-24) 3 933 4820

#### **Hai Phong Branch**

F2, Eliteco Building, Tran Hung Dao,  
Hong Bang District, Hai Phong  
Tel: (84-225) 384 1810  
Fax: (84-225) 384 1801

#### **District 1 Branch**

No 1003A, F10, Ruby Tower, 81-  
83-83B-85 Ham Nghi, Nguyen  
Thai Binh Ward, District 1, HCMC  
Tel: ((84-28) 3 535 6060  
Fax: (84-28) 3 535 2912