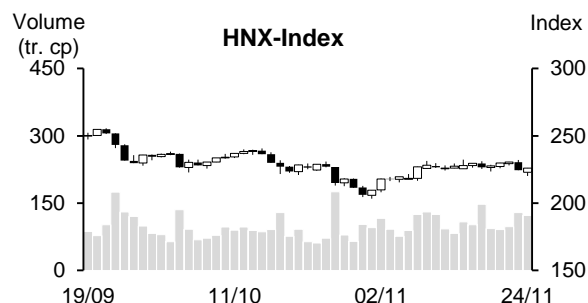
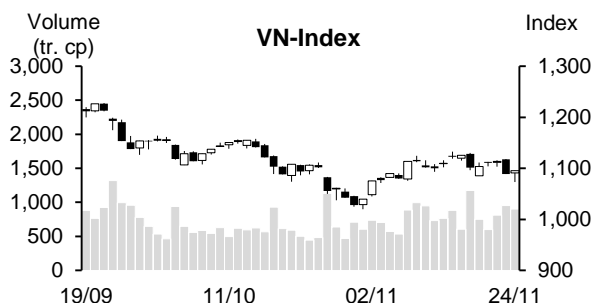


Day	Monday 20/11	Tuesday 21/11	Wednesday 22/11	Thursday 23/11	Friday 24/11	Average
VN-Index	1,103.66	1,110.46	1,113.82	1,088.49	1,095.61	1,102.41
Change +/-	2.47	6.80	3.36	-25.33	7.12	-1.12
Change %	0.22%	0.62%	0.30%	-2.27%	0.65%	-0.10%
Matched volume (mil. shares)	751.10	602.05	812.48	952.58	901.09	803.86
Matched value (bil. Dong)	15,121.27	12,706.12	17,361.88	19,164.54	17,782.09	16,427.18
Foreign net trade (bil. Dong)	465.55	-581.77	-746.29	-445.81	398.63	-181.94
VN30	1,102.85	1,108.60	1,109.80	1,082.68	1,087.34	1,098.25
Change +/-	-0.68	5.75	1.20	-27.12	4.66	-3.24
Change %	-0.06%	0.52%	0.11%	-2.44%	0.43%	-0.29%
Matched volume (mil. shares)	172.53	128.48	152.45	170.14	188.32	162.38
Matched value (bil. Dong)	4,777.19	3,814.95	4,587.44	4,793.76	5,278.79	4,650.43
Foreign net trade (bil. Dong)	80.48	-456.31	-676.54	-491.89	74.70	-293.91
HNX-Index	227.77	229.80	230.49	224.54	226.10	227.74
Change +/-	1.23	2.03	0.69	-5.95	1.56	-0.09
Change %	0.54%	0.89%	0.30%	-2.58%	0.70%	-0.03%
Matched volume (mil. shares)	93.27	91.38	97.42	129.16	122.45	106.73
Matched value (bil. Dong)	1,846.57	1,928.94	1,916.15	2,664.71	2,242.77	2,119.83
Foreign net trade (bil. Dong)	-1.37	6.82	-6.47	6.04	-0.34	0.94



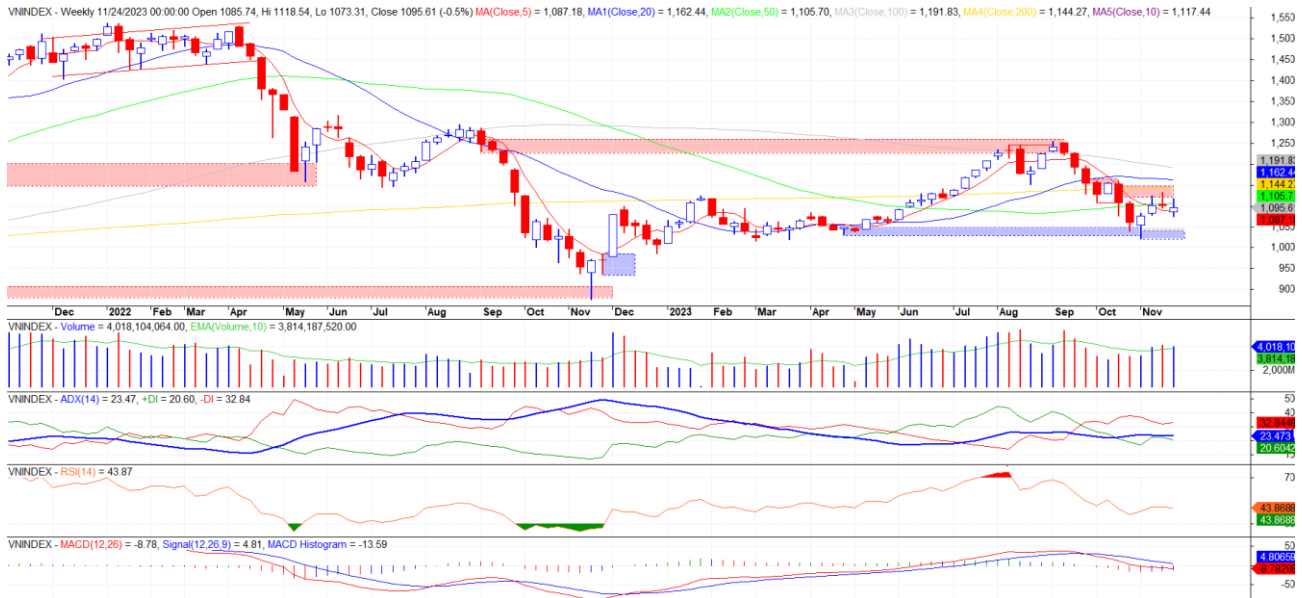
### REMARKABLE POINTS ON THE MARKET

The market saw another dropping week although seeing 4 green sessions out of 5. The sudden drop with high liquidity on Thursday denied all effort from the beginning of the year. However, negative sign also eased down as the market gained at the end of the week. The liquidity dropped slightly from last week but was still better than average in October, showing that investors joined in again. Stock groups differentiated clearly. The pressure came from banking, food and beverage, real estate, and retail. Meanwhile, securities, fertilizer, pork, and aviation stood out for gaining. Foreign investors saw the 3<sup>rd</sup> net selling week in a row.

### TECHNICAL POINT OF VIEW

VN-Index saw another head-withdraw candle on week chart. On daily chart, the sign hasn't seen clear improvement from last week. A small positive point is that the volume on the strong selling on November is still high but lower than November 17, however, candle change is still similarly high. The session at the end of the week saw a long base-withdraw candle that is positive with a long shadow with high volume, but the appearing position saw no support. Therefore, we doubt that the success of this candle and think that the index might only recover of 1-2 sessions before returning to a drop for testing bottom at demand level of 1,020-1,040.

### VN-Index



HNX-Index saw a struggling Doji candle on week chart, following head-withdraw candle at the beginning of last week. On daily chart, the index also dropped strongly covering all previous three gaining candles, and the volume was high, still showing strong selling pressure at 230-240. The last session of the week saw a rather positive base-withdraw candle, but it might only be a technical recovery of 1-2 sessions before dropping further. Paying attention on the level of 203-210.

### HNX-Index



In general, both indexes saw strong selling pressure last week, showing that it might drop further to test bottom. General strategy is having priority on keeping high cash weight and observing, shouldn't rush to join back in.

**MARKET STATISTICS****TOP 5 IN MATCHING VOLUME**

HOSE			
Ticker	Closing (VND)	Change %	Volume (share)
VIX	16,600	2.47%	223,382,956
NVL	17,600	9.32%	209,946,042
VND	21,300	5.19%	180,692,024
HAG	10,400	14.04%	141,564,293
DIG	25,000	-2.34%	134,545,316

HNX			
Ticker	Closing (VND)	Change %	Volume (share)
SHS	17,800	2.30%	149,040,344
CEO	22,400	-1.75%	111,089,522
HUT	20,000	0.50%	33,741,532
PVS	37,000	1.65%	33,494,645
MBS	21,500	4.37%	27,870,563

**TOP 5 IN MATCHING VALUE**

HOSE			
Ticker	Closing (VND)	Change %	Value (bil. VND)
VND	21,300	5.19%	3,847.8
SSI	32,000	1.59%	3,798.0
VIX	16,600	2.47%	3,711.1
NVL	17,600	9.32%	3,596.9
DIG	25,000	-2.34%	3,448.4

HNX			
Ticker	Closing (VND)	Change %	Value (bil. VND)
SHS	17,800	2.30%	2,645.6
CEO	22,400	-1.75%	2,555.1
PVS	37,000	1.65%	1,259.2
IDC	48,900	-1.01%	760.5
HUT	20,000	0.50%	686.8

**STATISTICS ON THE IMPACT ON THE INDEX****TOP 5 GAINING IMPACT**

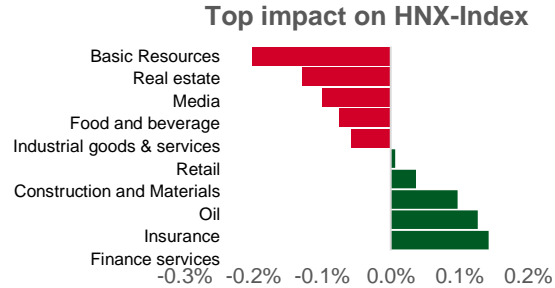
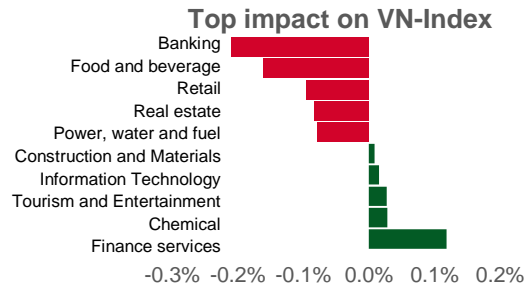
HOSE			
Ticker	Closing (VND)	Change %	Impact %
BID	43,650	1.75%	0.09%
NVL	17,600	9.32%	0.07%
VCB	86,000	0.47%	0.05%
VND	21,300	5.19%	0.03%
HAG	10,400	14.04%	0.03%

HNX			
Ticker	Closing (VND)	Change %	Impact %
PTI	45,000	15.98%	0.16%
MBS	21,500	4.37%	0.13%
SHS	17,800	2.30%	0.11%
PVS	37,000	1.65%	0.09%
VCS	57,800	1.76%	0.05%

**TOP 5 DROPPING IMPACT**

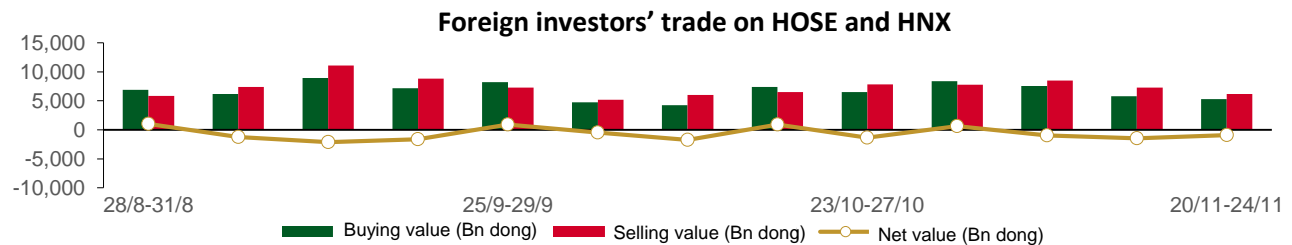
HOSE			
Ticker	Closing (VND)	Change %	Impact %
MWG	38,550	-6.88%	-0.09%
TCB	30,050	-3.53%	-0.09%
VNM	68,300	-2.43%	-0.08%
MSN	61,800	-3.59%	-0.07%
VIC	41,350	-2.01%	-0.07%

HNX			
Ticker	Closing (VND)	Change %	Impact %
KSV	30,000	-7.69%	-0.16%
HTP	21,400	-12.65%	-0.09%
VFS	18,800	-9.62%	-0.08%
CEO	22,400	-1.75%	-0.07%
VNT	52,700	-18.80%	-0.07%



## STATISTICS ON FOREIGN INVESTORS' TRADE

Exchange	Buying vol. (mil. share)	Buying value (bil. VND)	Selling vol. (mil. share)	Selling value (bil. VND)	Net selling/buying value (mil. share)	Net selling/buying value (bil. VND)
HOSE	200.55	5,230.77	249.66	6,140.47	(49.12)	(909.69)
HNX	2.35	61.22	2.60	56.54	(0.26)	4.68
<b>Total</b>	<b>202.89</b>	<b>5,291.99</b>	<b>252.27</b>	<b>6,197.01</b>	<b>(49.37)</b>	<b>(905.01)</b>



### TOP 5 BOUGHT-IN

HOSE			
Ticker	Closing (VND)	Buying vol. (share)	Buying value (bil. VND)
DGC	95,500	1,860,399	175.53
SSI	32,000	5,406,336	171.53
VND	21,300	7,775,720	165.60
STB	28,300	4,588,600	133.58
FUEVFVND	24,710	4,590,884	118.14

HNX			
Ticker	Closing (VND)	Buying vol. (share)	Buying value (bil. VND)
PVS	37,000	349,300	13.05
IDC	48,900	137,511	6.73
SHS	17,800	263,385	4.38
PVI	44,800	34,400	1.55
MBS	21,500	56,575	1.11

### TOP 5 SOLD-OUT

HOSE			
Ticker	Closing (VND)	Buying vol. (share)	Buying value (bil. VND)
VPB	19,200	(34,942,911)	(734.74)
VHM	39,100	(8,393,065)	(328.55)
VNM	68,300	(3,442,545)	(237.63)
VRE	22,600	(9,964,151)	(226.06)
FUESSVFL	17,810	(11,341,300)	(203.90)

HNX			
Ticker	Closing (VND)	Buying vol. (share)	Buying value (bil. VND)
CEO	22,400	(381,572)	(9.00)
TIG	10,700	(616,100)	(7.07)
HUT	20,000	(148,200)	(3.14)
L14	46,600	(29,800)	(1.27)
PMC	80,000	(15,100)	(1.13)

### **Analyst Certification**

The report is made by Pham Quang Chuong, analyst – Phu Hung Securities Joint Stock Company. Each research analyst(s), strategist(s) or research associate(s) responsible for the preparation and content of all or any identified portion of this research report hereby certifies that, with respect to each issuer or security or any identified portion of the report with respect to each issuer or security that the research analyst, strategist or research associate covers in this research report, all of the views expressed by that research analyst, strategist or research associate in this research report accurately reflect their personal views about those issuer(s) or securities. Each research analyst(s), strategist(s) or research associate(s) also certify that no part of their compensation was, is, or will be, directly or indirectly, related to the specific recommendation(s) or view(s) expressed by that research analyst, strategist or research associate in this research report.

### **Ratings Definition**

Buy = higher than domestic market by over 10%  
Hold = similar to domestic market at the rate of +10% ~ -10%  
Sell = lower than domestic market by below 10%  
No rating = the code is not rated in Phu Hung or not yet listed  
The performance is determined by total recollection in 12 months (including dividend).

### **Analyst Certification**

This information has been compiled from sources we believe to be reliable, but we do not hold ourselves responsible for its completeness or accuracy. It is not an offer to sell or solicitation of an offer to buy any securities. Phu Hung Securities and its affiliates and their officers and employees may or may not have a position in or with respect to the securities mentioned herein. Phu Hung Securities (or one of its affiliates) may from time to time perform investment banking or other services or solicit investment banking or other business for any company mentioned in this report. All opinions and estimates included in this report constitute our judgment as of this date and are subject to change without notice.

#### **© Phu Hung Securities Corporation**

F21, Phu My Hung Tower, 08 Hoang Van Thai, Tan Phu Ward, District 7, HCMC  
Phone: (84-28) 5 413 5479 Fax: (84-28) 5 413 5472  
Customer Service: 1900 25 23 58 Call Center: (84-28) 5 413 5488  
E-mail: [info@phs.vn](mailto:info@phs.vn) / [support@phs.vn](mailto:support@phs.vn) Web: [www.phs.vn](http://www.phs.vn)

#### **Phu My Hung Trading office**

CR2-08 building, 107 Ton Dat Tien, Tan Phu Ward, District 7, HCMC  
Tel: (84-28) 5 413 5478  
Fax: (84-28) 5 413 5473

#### **District 3 Branch**

F4-5, D&D Tower, 458 Nguyen Thi Minh Khai, Ward 2, District 3, HCMC  
Tel: (84-28) 3 820 8068  
Fax: (84-28) 3 820 8206

#### **Thanh Xuan Branch**

F5, UDIC Complex, N04 Hoang Dao Thuy, Trung Hoa Ward, Cau Giay District, Hanoi  
Tel: (84-24) 6 250 9999  
Fax: (84-24) 6 250 6666

#### **Tan Binh Branch**

Park Legend Building 251 Hoang Van Thu, Ward 2, Tan Binh District, HCMC  
Tel: (84-28) 3 813 2401  
Fax: (84-28) 3 813 2415

#### **Hanoi Branch**

F5, Vinafor Tower, 127 Lo Duc, Hai Ba Trung District, Hanoi  
Tel: (84-24) 3 933 4566  
Fax: (84-24) 3 933 4820

#### **Hai Phong Branch**

F2, Eliteco Building, Tran Hung Dao, Hong Bang District, Hai Phong  
Tel: (84-225) 384 1810  
Fax: (84-225) 384 1801

#### **District 1 Branch**

No 1003A, F10, Ruby Tower, 81-83-83B-85 Ham Nghi, Nguyen Thai Binh Ward, District 1, HCMC  
Tel: ((84-28) 3 535 6060  
Fax: (84-28) 3 535 2912