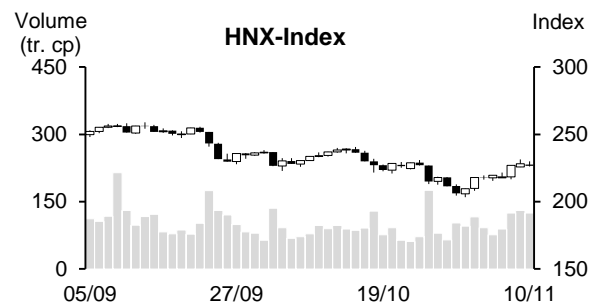
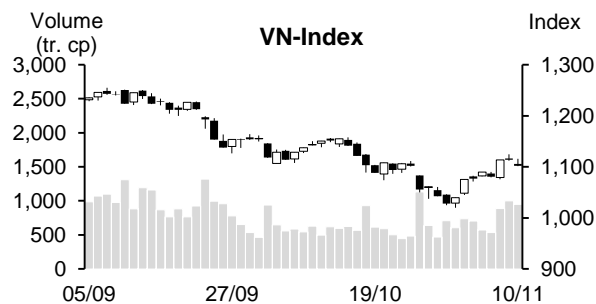


06/11 – 10/11/2023

Day	Monday 06/11	Tuesday 07/11	Wednesday 08/11	Thursday 09/11	Friday 10/11	Average
VN-Index	1,089.66	1,080.29	1,113.43	1,113.89	1,101.68	1,099.79
Change +/-	12.88	-9.37	33.14	0.46	-12.21	4.98
Change %	1.20%	-0.86%	3.07%	0.04%	-1.10%	0.47%
Matched volume (mil. shares)	571.62	536.08	886.47	997.17	945.65	787.40
Matched value (bil. Dong)	11,045.39	10,581.60	17,274.63	20,371.20	18,777.06	15,609.98
Foreign net trade (bil. Dong)	352.50	-264.94	-265.82	-806.22	-232.90	-243.48
VN30	1,103.52	1,092.71	1,129.95	1,122.95	1,109.05	1,111.64
Change +/-	17.33	-10.81	37.24	-7.00	-13.90	4.57
Change %	1.60%	-0.98%	3.41%	-0.62%	-1.24%	0.43%
Matched volume (mil. shares)	169.88	133.94	233.54	232.10	206.02	195.10
Matched value (bil. Dong)	4,650.78	3,712.45	6,518.15	6,766.09	5,741.40	5,477.77
Foreign net trade (bil. Dong)	322.75	-261.40	-333.06	-644.01	-122.62	-207.67
HNX-Index	219.59	218.29	227.03	228.22	226.65	223.96
Change +/-	1.84	-1.30	8.74	1.19	-1.57	1.78
Change %	0.85%	-0.59%	4.00%	0.53%	-0.69%	0.82%
Matched volume (mil. shares)	76.20	88.85	124.64	130.00	124.41	108.82
Matched value (bil. Dong)	1,304.54	1,602.22	2,265.17	2,409.53	2,297.10	1,975.71
Foreign net trade (bil. Dong)	136.36	56.18	56.07	4.80	-13.54	47.97



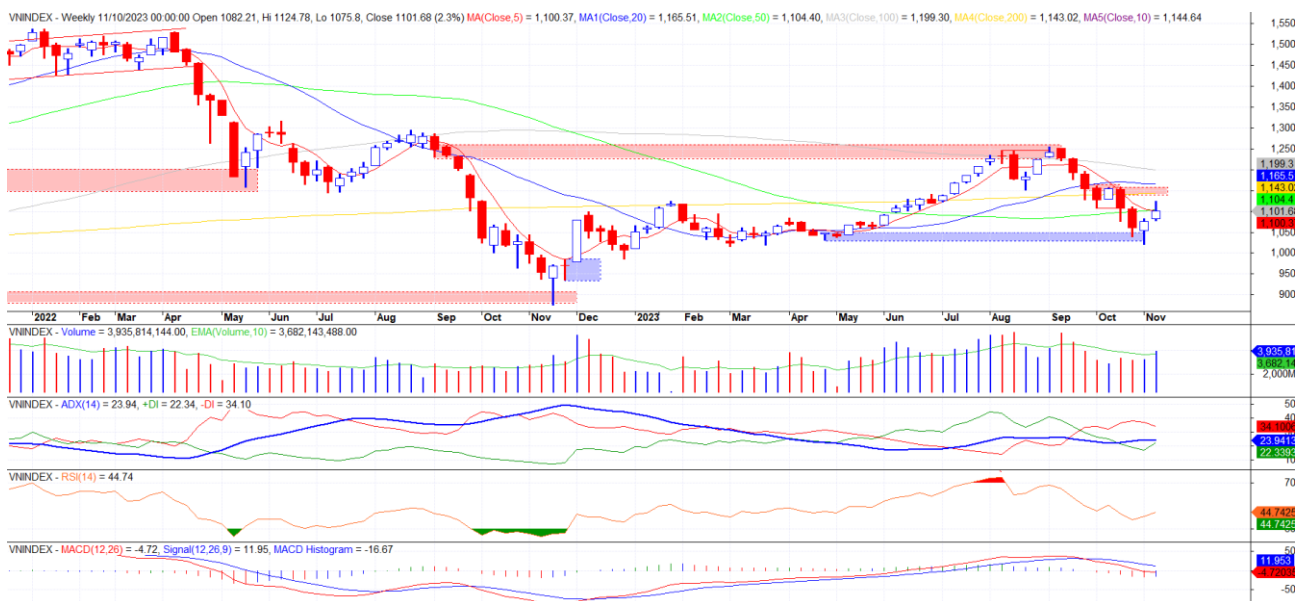
REMARKABLE POINTS ON THE MARKET

The market saw the second gaining week in a row with better liquidity, showing that the cash flow joined back in. However, the recovery wasn't as good as previous week with alternative gains and drops. Especially, the drop at the end of the week as well as the lower gain in previous one showed that selling pressure is appearing. This selling saw remarkable impact from foreign investors as they turned to a net selling again with nearly 1 trillion dong last week. About the groups, other than food and beverage that dropped, remaining groups all closed at impressive rate with increasing volume. In which, standing out the most are still real estate and securities.

TECHNICAL POINT OF VIEW

VN-Index saw another gaining week, but the situation was selling at the end of the week so there was head-withdraw candle on week chart. On daily chart, the index suddenly gained strongly to above 1,100-1,110 points, showing sign of an exploding session following the trend, showing possibility of a new middle-term gaining trend. However, the sign on two correcting sessions after that lowered this possibility as correcting sign wasn't really positive with strong candle and volume. With current sign, we think that we need to observe the sign in the next 1-2 sessions: if the range narrows down and the volume drops to below average, it might move toward demand level of 1,075-1,090 and continue recovering toward supply level of 1,140-1,157 points; if the range and volume is still high, and the demand weakens at 1,075-1,090, there is possibility of creating recovering peak.

VN-Index



HNX-Index saw a gaining week again after previous week base-withdraw candle. On daily chart, the index slightly surpassed supply level of 224-230, but there were two head-withdraw candles in a row after that, there hasn't been any strong drop but the volume in these two sessions stayed at high level, showing cautious sign. If there is a strong drop after that and close below MA20 again, there will be possibility of seeing recovering peak; if the index only corrects slightly, it might still gain to supply level of 235-240.

HNX-Index



In general, both indexes saw positive signs last week, but it might only be within a short-term recovery. With selling sign in the last two sessions of the week, general strategy is observing correcting sign in 1-2 sessions, only joining in if there is positive scenario, the weight might be considered to be at average-high level, having priority on Real estate, Steel, Securities, Construction, and Chemical.

MARKET STATISTICS**TOP 5 IN MATCHING VOLUME**

HOSE			
Ticker	Closing (VND)	Change %	Volume (share)
VIX	15,750	15.38%	220,835,389
NVL	16,000	9.97%	191,228,681
HPG	26,500	5.58%	134,542,344
SSI	30,800	6.57%	134,178,431
DIG	24,400	9.42%	123,032,813

HNX			
Ticker	Closing (VND)	Change %	Volume (share)
SHS	17,400	13.73%	182,608,757
CEO	23,500	7.31%	80,408,436
HUT	19,700	3.68%	29,970,265
MBS	20,400	10.87%	27,056,388
PVS	36,500	4.58%	26,358,393

TOP 5 IN MATCHING VALUE

HOSE			
Ticker	Closing (VND)	Change %	Value (bil. VND)
SSI	30,800	6.57%	4,045.5
HPG	26,500	5.58%	3,547.1
VIX	15,750	15.38%	3,290.2
NVL	16,000	9.97%	2,978.5
DIG	24,400	9.42%	2,934.8

HNX			
Ticker	Closing (VND)	Change %	Value (bil. VND)
SHS	17,400	13.73%	3,059.6
CEO	23,500	7.31%	1,873.2
PVS	36,500	4.58%	956.9
IDC	48,500	8.02%	672.4
HUT	19,700	3.68%	581.6

STATISTICS ON THE IMPACT ON THE INDEX**TOP 5 GAINING IMPACT**

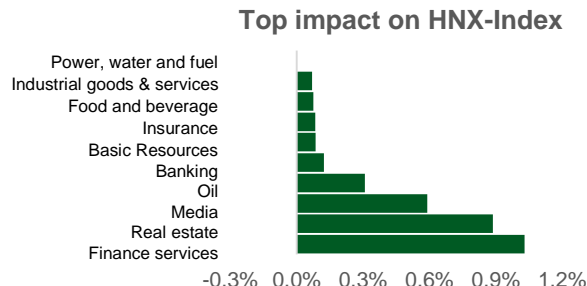
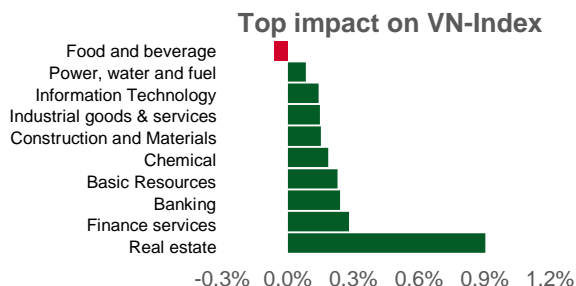
HOSE			
Ticker	Closing (VND)	Change %	Impact %
VIC	44,950	8.05%	0.30%
HPG	26,500	5.58%	0.19%
VHM	42,300	4.44%	0.18%
CTG	29,400	5.00%	0.16%
FPT	91,500	5.17%	0.13%

HNX			
Ticker	Closing (VND)	Change %	Impact %
SHS	17,400	13.73%	0.58%
IDC	48,500	8.02%	0.40%
MBS	20,400	10.87%	0.30%
CEO	23,500	7.31%	0.28%
PVS	36,500	4.58%	0.26%

TOP 5 DROPPING IMPACT

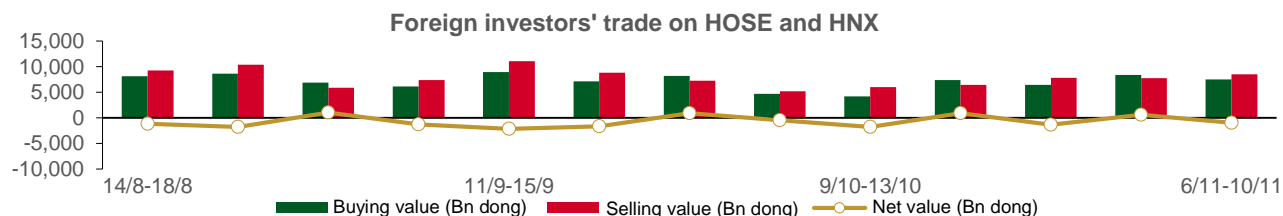
HOSE			
Ticker	Closing (VND)	Change %	Impact %
VCB	86,000	-3.26%	-0.37%
MSN	61,700	-3.44%	-0.07%
SAB	62,400	-2.35%	-0.04%
SSB	23,800	-2.06%	-0.03%
VRE	23,950	-1.84%	-0.02%

HNX			
Ticker	Closing (VND)	Change %	Impact %
KSV	33,000	-2.94%	-0.07%
SCG	64,400	-1.83%	-0.03%
THD	36,100	-0.55%	-0.03%
DTK	10,700	-0.93%	-0.02%
PVI	44,900	-0.44%	-0.02%



STATISTICS ON FOREIGN INVESTORS' TRADE

Exchange	Buying vol. (mil. share)	Buying value (bil. VND)	Selling vol. (mil. share)	Selling value (bil. VND)	Net selling/buying value (mil. share)	Net selling/buying value (bil. VND)
HOSE	292.95	6,988.43	326.79	8,205.78	(33.85)	(1,217.38)
HNX	28.71	536.84	16.19	296.96	12.53	239.87
Total	321.66	7,525.27	342.98	8,502.74	(21.32)	(977.51)



TOP 5 BOUGHT-IN

HOSE

Ticker	Closing (VND)	Buying vol. (share)	Buying value (bil. VND)
HPG	26,500	11,055,378	286.36
STB	29,500	8,769,948	258.60
DGC	93,000	1,801,473	165.22
GMD	68,900	1,149,586	78.55
HSG	20,650	3,580,047	71.85

HNX

Ticker	Closing (VND)	Buying vol. (share)	Buying value (bil. VND)
SHS	17,400	10,743,500	164.96
IDC	48,500	1,253,500	58.52
PVS	36,500	312,272	10.45
PVI	44,900	113,812	5.12
SLS	153,200	13,700	2.11

TOP 5 SOLD-OUT

HOSE

Ticker	Closing (VND)	Buying vol. (share)	Buying value (bil. VND)
FUESSVFL	18,030	(25,456,400)	(460.65)
VHM	42,300	(10,997,183)	(460.16)
MWG	39,400	(11,644,072)	(449.19)
VNM	69,600	(2,980,010)	(211.29)
VCB	86,000	(2,152,221)	(188.43)

HNX

Ticker	Closing (VND)	Buying vol. (share)	Buying value (bil. VND)
TNG	18,600	(184,949)	(3.45)
CEO	23,500	(132,406)	(3.37)
VCS	56,700	(41,700)	(2.35)
TIG	11,300	(187,900)	(2.12)
MBS	20,400	(95,245)	(1.95)

Analyst Certification

The report is made by Pham Quang Chuong, analyst – Phu Hung Securities Joint Stock Company. Each research analyst(s), strategist(s) or research associate(s) responsible for the preparation and content of all or any identified portion of this research report hereby certifies that, with respect to each issuer or security or any identified portion of the report with respect to each issuer or security that the research analyst, strategist or research associate covers in this research report, all of the views expressed by that research analyst, strategist or research associate in this research report accurately reflect their personal views about those issuer(s) or securities. Each research analyst(s), strategist(s) or research associate(s) also certify that no part of their compensation was, is, or will be, directly or indirectly, related to the specific recommendation(s) or view(s) expressed by that research analyst, strategist or research associate in this research report.

Ratings Definition

Buy = higher than domestic market by over 10%
Hold = similar to domestic market at the rate of +10% ~ -10%
Sell = lower than domestic market by below 10%
No rating = the code is not rated in Phu Hung or not yet listed
The performance is determined by total recollection in 12 months (including dividend).

Analyst Certification

This information has been compiled from sources we believe to be reliable, but we do not hold ourselves responsible for its completeness or accuracy. It is not an offer to sell or solicitation of an offer to buy any securities. Phu Hung Securities and its affiliates and their officers and employees may or may not have a position in or with respect to the securities mentioned herein. Phu Hung Securities (or one of its affiliates) may from time to time perform investment banking or other services or solicit investment banking or other business for any company mentioned in this report. All opinions and estimates included in this report constitute our judgment as of this date and are subject to change without notice.

© Phu Hung Securities Corporation

F21, Phu My Hung Tower, 08 Hoang Van Thai, Tan Phu Ward, District 7, HCMC
Phone: (84-28) 5 413 5479 Fax: (84-28) 5 413 5472
Customer Service: 1900 25 23 58 Call Center: (84-28) 5 413 5488
E-mail: info@phs.vn / support@phs.vn Web: www.phs.vn

Phu My Hung Trading office

CR2-08 building, 107 Ton Dat
Tien, Tan Phu Ward, District 7,
HCMC
Tel: (84-28) 5 413 5478
Fax: (84-28) 5 413 5473

District 3 Branch

F4-5, D&D Tower,
458 Nguyen Thi Minh Khai,
Ward 2, District 3, HCMC
Tel: (84-28) 3 820 8068
Fax: (84-28) 3 820 8206

Thanh Xuan Branch

F5, UDIC Complex, N04 Hoang Dao
Thuy, Trung Hoa Ward, Cau Giay
District, Hanoi
Tel: (84-24) 6 250 9999
Fax: (84-24) 6 250 6666

Tan Binh Branch

Park Legend Building
251 Hoang Van Thu, Ward 2, Tan
Binh District, HCMC
Tel: (84-28) 3 813 2401
Fax: (84-28) 3 813 2415

Hanoi Branch

F5, Vinafor Tower, 127 Lo
Duc, Hai Ba Trung District,
Hanoi
Tel: (84-24) 3 933 4566
Fax: (84-24) 3 933 4820

Hai Phong Branch

F2, Eliteco Building, Tran Hung Dao,
Hong Bang District, Hai Phong
Tel: (84-225) 384 1810
Fax: (84-225) 384 1801

District 1 Branch

No 1003A, F10, Ruby Tower, 81-
83-83B-85 Ham Nghi, Nguyen
Thai Binh Ward, District 1, HCMC
Tel: ((84-28) 3 535 6060
Fax: (84-28) 3 535 2912