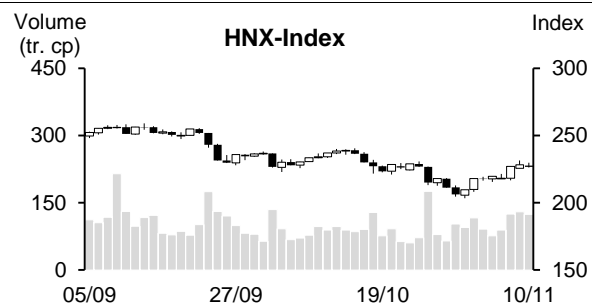
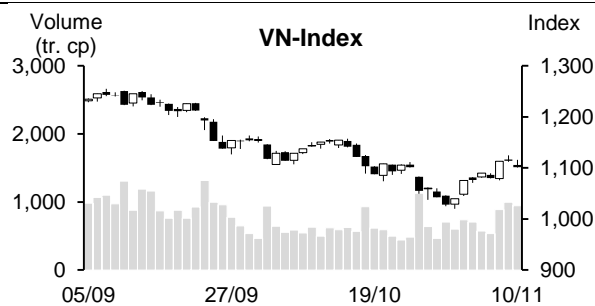


| 10/11/2023                          | HOSE            |               | VN30          |                | HNX           |               |
|-------------------------------------|-----------------|---------------|---------------|----------------|---------------|---------------|
|                                     | Value           | Change %      | Value         | Change %       | Value         | Change %      |
| Closing rate                        | 1,101.68        | -1.10%        | 1,109.05      | -1.24%         | 226.65        | -0.69%        |
| <b>Total volume (mil. shares)</b>   | <b>1,033.06</b> | <b>-1.84%</b> | <b>257.81</b> | <b>2.08%</b>   | <b>127.06</b> | <b>-2.92%</b> |
| <b>Matched volume (mil. shares)</b> | <b>945.65</b>   | <b>-5.17%</b> | <b>206.02</b> | <b>-11.24%</b> | <b>124.41</b> | <b>-4.29%</b> |
| 20-session average (mil. shares)    | 683.90          | 38.27%        | 178.26        | 15.57%         | 96.97         | 28.30%        |
| <b>Total value (bil dong)</b>       | <b>20,776</b>   | <b>-5.56%</b> | <b>7,013</b>  | <b>-9.03%</b>  | <b>2,417</b>  | <b>-0.59%</b> |
| <b>Matched value (bil dong)</b>     | <b>18,777</b>   | <b>-7.83%</b> | <b>5,741</b>  | <b>-15.14%</b> | <b>2,297</b>  | <b>-4.67%</b> |
| 20-session average (bil dong)       | 13,736          | 36.70%        | 5,121         | 12.11%         | 1,796         | 27.92%        |
|                                     | Weight %        |               | Weight %      |                | Weight %      |               |
| <b>Number of gainers</b>            | 148             | 24%           | 3             | 10%            | 54            | 23%           |
| <b>Number of droppers</b>           | 417             | 68%           | 27            | 90%            | 104           | 45%           |
| <b>Stand still codes</b>            | 49              | 8%            | 0             | 0%             | 72            | 31%           |



### REMARKABLE POINTS ON THE MARKET

The market dropped again on Friday with the selling taking control widely. Fed President's hawk-style statement last night not only saw impact on Wall Streets but Asia stock markets also struggled. VN-Index opened with dropping gap from early and maintained correcting pressure in most trading time. There was time that the indexes recovered to reference in the first half of the afternoon with the pull from real estate, securities, steel, and power. However, sellers' determination once more made the market dropping and it closed at near lowest level. In which, pork and power were a few rare groups that could stay in green at the end. However, the gain was remarkably lower. The liquidity was still positive as it stayed at high level, showing that the cash flow was still strong on the market.

### TECHNICAL POINT OF VIEW

In technical term, VN-Index dropped again. The volume stayed above 10 and 20-session average, showing that the cash flow was still positive. Not just that, the index stayed above MA5, and MA5 still differentiated positively from MA20, showing that the main trend in short-term is still recovering and this drop might only be within a technical shake. However, this shake might continue as MA20 still dropped with +DI being below -DI, showing that selling pressure hasn't been shaken off. Therefore, the index might continue to challenge close support around 1,087 points (MA20) before returning to the main trend. For HNX, HNX-Index saw similar situation. It also dropped but still closed above MA20, showing that the drop is only technical, with support around 222 points (MA20). In general, the market is on a technical shake to support short-term recovering trend. Therefore, investors might use the shake to restructure surfing positions. In which, having priority on good-fundamental codes with growth prospect that can attract strong cash flow.

**Recommending code:** VSC (Take profit)

**Observing code:** SHB, DTD

(Details in page 2)

## RECOMMENDING CODES AS PER TECHNICAL SIGNS

## Codes of the day

| No | Ticker | Recommend   | Recommended date | Current Price | Operation Price | Current profit/loss | Target Price | Expected profit | Cut loss price | Expected Loss | Note                     |
|----|--------|-------------|------------------|---------------|-----------------|---------------------|--------------|-----------------|----------------|---------------|--------------------------|
| 1  | VSC    | Take profit | 13/11/23         | 26.65         | 25              | 6.6%                | 27.9         | 11.6%           | 23.5           | -6.0%         | Gaining trend slows down |

| No | Ticker | Recommend      | Recommended date | Current Price | Resistance | Cut loss | Technical sign  |
|----|--------|----------------|------------------|---------------|------------|----------|---|
| 1  | SHB    | Observe to buy | 13/11/23         | 11.15         | 11.9       | 10.6     | Correcting sign is not too bad with small candle, showing that it might be technical correction -> might consider buying around 11  |
| 2  | DTD    | Observe to buy | 13/11/23         | 23.5          | 26         | 20.6     | Correcting sign is quite good with struggling style to create inside bar, showing possibility of a short collection before gaining again -> might consider buying around 22.4 |

## List of recommended codes

| No | Ticker | Recommend | Recommended date | Current Price | 04/11/22 | Current profit/loss | Target Price | Expected profit | Cut loss price | Expected Loss | Note |
|----|--------|-----------|------------------|---------------|----------|---------------------|--------------|-----------------|----------------|---------------|------|
| 1  | DHT    | Buy       | 01/11/23         | 23.3          | 21       | 10.95%              | 25.4         | 21%             | 19.4           | -7.6%         |      |
| 2  | BCM    | Buy       | 03/11/23         | 60.4          | 58.8     | 2.7%                | 63.6         | 8.2%            | 56.5           | -4%           |      |
| 3  | TCM    | Buy       | 08/11/23         | 42.15         | 41.7     | 1.1%                | 44.5         | 6.7%            | 40.3           | -3%           |      |
| 4  | ACB    | Buy       | 10/11/23         | 22.4          | 22.55    | -0.7%               | 24.4         | 8.2%            | 21.5           | -5%           |      |

**DAILY NEWS****Domestic news****SBV stopped issuing trust bonds, returning massive volume to the banking system**

On November 9, for the first time after 7 weeks, SBV didn't see new issuance on this section.

On the other side, there was 20 trillion dong of trust bond matured, so that amount was returned to the system.

Besides, SBV still offered to buy currency paper in 7-day term but there was no participant.

According to the data from September 21 to November 8, SBV issued a total of 360,345 billion dong of trust bonds, in 28-day term. As of November 9, 2023, there was 185,695 billion dong returned to the system via matured trust bonds. So, outstanding trust bond is 174,650 billion which will be matured in near future.

SBV stopped issuing trust bonds while interbank interest rate increased again from record low level.

**Shrimp export to Japan might recover in December**

Vietnam Association of Sea products Export and processing (VASEP) stated that as of October 15, Vietnam shrimp export to Japan is 388 million USD, down by 28% YoY.

In September alone, shrimp export to Japan dropped by 10% YoY, the lowest drop since the beginning of the year. In Q3, shrimp export to Japan is 135 million USD, down by 26% YoY, the lowest drop comparing to two previous quarters.

"Vietnam shrimp export to this market in the final quarter of the year is expected to see lower drop and might recover in December" VASEP forecasted.

**Export to China is nearly 50 billion USD**

According to Department of import and export (Ministry of Industry and Trade), in 10 months, Vietnam export to China is 49.5 billion USD, up by 5% YoY, or by 2.3 billion USD. Vietnam material import from China is 89.74 billion USD, down by 10.2% YoY. Total bilateral trade value after 10 months is 139.3 billion USD.

At the lead for export value (9-month data) is phone and parts at over 10.8 billion USD, accounting 25.4% export. The products with impressive export growth YoY are vegetable and fruit up by 160.3%; rice by 55.2%; cashew nut by 42.3%; paper and paper products by 76.8%; and coal by 160.8%.

Source: Cafef, Vietnambiz, Fireant

## Listing Company News

### **VCB: Vietcombank lowered mobilizing interest rate further, the highest is only 5%/year**

On November 10, Vietcombank (VCB) announced to lower mobilizing interest rate by 0.1-0.2%/year applied for both on-counter and online deposits.

In detail, in 1-month term, VCB lowered the rate from 2.8% to 2.6%/year; for 3-month term, the rate is only 2.9%, down by 0.2 percent-points.

For 6-month term, the rate also dropped by 0.2 percent-points to 3.9%/year. For 12-36-month term, the drop is 0.1 percent-points, the rate dropped from 5.1% to only 5%.

So, in only 2 months, VCB saw 4 interest rate drops with total drop of nearly 1%/year. The rate is now less than 3%/year for 3-month-and-less terms and only 5%/year for long terms, VCB interest rate is now the lowest ever in this bank.

### **PV GAS EBT is over 12 trillion in 10 months**

PV Gas (GAS) stated that in 10 months 2023, combined revenue is over 77 trillion, 21% higher than 10-month target.

10-month EBT is over 12 trillion, 78% higher than 10-month target. State budget submission is over 5 trillion, 62% higher than 10-month target (in which, EBT and state budget submission completed target 4-6 months in advance). So, in October alone, PV GAS revenue is 9,590 billion and EBT is 726 billion.

In 2023, PV GAS set combined revenue target at 76,441 billion and EBT at 8,171 billion. So, after 10 months, the company completed revenue target and surpassed profit target by 47%.

### **Viglacera profit is over 1.6 trillion in 10 months 2023**

According to Viglacera (VGC), in October 2023, parent company EBT reached 108% month-target. In 10 months, VGC parent company profit increased by 72.3 billion YoY, reaching 135% year-target. Combined EBT in October reached 110% target of 10 months 2023, reaching 136% year-target.

In 2023, Viglacera set combined EBT target at 1,210 billion, so, 10-month profit is about over 1,640 billion.

For Q4 target, Viglacera stated to still focus on 2 main sections – construction materials and real estate.

### **BCM will soon spend over 800 billion dong to pay 2022 dividend**

Industrial Investment and Development (Becamex, HOSE: BCM) announced closing date for paying 2022 cash dividend. Ex-rights date is November 28, 2023. Operating rate is 8%. With 1,035 billion outstanding shares, Becamex expects to spend 828 billion dong on this payment. Expected payment time is December 29, 2023.

Currently, Binh Duong People's Committee holds over 987.8 million BCM shares or 95.44%. So, in this payment, the authority will receive over 790 billion.

For Q3/2023 business results, Becamex revenue is over 1,127 billion, down by 50% YoY. Remarkably, real estate trading and investment revenue dropped strongly by 61% YoY to only over 728 billion.

Since cost dropped stronger than revenue so after deduction, gross profit is over 728 billion, up by 8% YoY. Therefore, BCM net profit is over 217 billion, up by 7%.

However, in 9 months, BCM net revenue is only 3,012 billion and net profit is over 390 billion, down by 46% and 75% YoY.

Source: Fireant, Vietstock

**MARKET STATISTICS****Statistics on matching trade****TOP 5 IMPACTING GAINERS**

| HOSE   |                  |             |             |
|--------|------------------|-------------|-------------|
| Ticker | Closing<br>(VND) | Change<br>% | Impact<br>% |
| PGV    | 22,550           | 2.50%       | 0.01%       |
| LGC    | 52,000           | 5.48%       | 0.01%       |
| GEX    | 21,850           | 2.10%       | 0.01%       |
| POW    | 11,700           | 1.30%       | 0.01%       |
| VJC    | 109,000          | 0.55%       | 0.01%       |

| HNX    |                  |             |             |
|--------|------------------|-------------|-------------|
| Ticker | Closing<br>(VND) | Change<br>% | Impact<br>% |
| DTK    | 10,700           | 2.88%       | 0.07%       |
| DNP    | 23,000           | 4.07%       | 0.03%       |
| VNT    | 59,400           | 10.00%      | 0.03%       |
| SHS    | 17,400           | 0.58%       | 0.03%       |
| TAR    | 9,900            | 10.00%      | 0.02%       |

**TOP 5 IMPACTING DROPPERS**

| HOSE   |                  |             |             |
|--------|------------------|-------------|-------------|
| Ticker | Closing<br>(VND) | Change<br>% | Impact<br>% |
| VCB    | 86,000           | -2.16%      | -0.24%      |
| VPB    | 19,550           | -2.25%      | -0.08%      |
| BID    | 42,200           | -1.52%      | -0.07%      |
| GAS    | 78,700           | -1.63%      | -0.07%      |
| VHM    | 42,300           | -1.40%      | -0.06%      |

| HNX    |                  |             |             |
|--------|------------------|-------------|-------------|
| Ticker | Closing<br>(VND) | Change<br>% | Impact<br>% |
| HUT    | 19,700           | -1.99%      | -0.12%      |
| CEO    | 23,500           | -2.49%      | -0.10%      |
| THD    | 36,100           | -1.10%      | -0.05%      |
| PVS    | 36,500           | -0.82%      | -0.05%      |
| IDC    | 48,500           | -0.82%      | -0.04%      |

**TOP 5 IN MATCHING VOLUME**

| HOSE   |                  |             |                   |
|--------|------------------|-------------|-------------------|
| Ticker | Closing<br>(VND) | Change<br>% | Volume<br>(share) |
| VIX    | 15,750           | 0.96%       | 56,233,028        |
| HAG    | 8,700            | 2.35%       | 46,229,971        |
| NVL    | 16,000           | -1.84%      | 43,030,813        |
| GEX    | 21,850           | 2.10%       | 35,858,029        |
| DIG    | 24,400           | -0.41%      | 35,137,194        |

| HNX    |                  |             |                   |
|--------|------------------|-------------|-------------------|
| Ticker | Closing<br>(VND) | Change<br>% | Volume<br>(share) |
| SHS    | 17,400           | 0.58%       | 35,874,188        |
| CEO    | 23,500           | -2.49%      | 23,598,705        |
| HUT    | 19,700           | -1.99%      | 6,284,286         |
| MBS    | 20,400           | 0.00%       | 5,809,436         |
| PVS    | 36,500           | -0.82%      | 5,473,591         |

**TOP 5 IN MATCHING VALUE**

| HOSE   |                  |             |                     |
|--------|------------------|-------------|---------------------|
| Ticker | Closing<br>(VND) | Change<br>% | Value<br>(bil. VND) |
| SSI    | 30,800           | -0.16%      | 1,009.8             |
| VIX    | 15,750           | 0.96%       | 898.1               |
| DIG    | 24,400           | -0.41%      | 876.0               |
| GEX    | 21,850           | 2.10%       | 793.2               |
| HPG    | 26,500           | -0.75%      | 747.3               |

| HNX    |                  |             |                     |
|--------|------------------|-------------|---------------------|
| Ticker | Closing<br>(VND) | Change<br>% | Value<br>(bil. VND) |
| SHS    | 17,400           | 0.58%       | 626.9               |
| CEO    | 23,500           | -2.49%      | 564.4               |
| PVS    | 36,500           | -0.82%      | 202.0               |
| IDC    | 48,500           | -0.82%      | 141.6               |
| HUT    | 19,700           | -1.99%      | 125.6               |

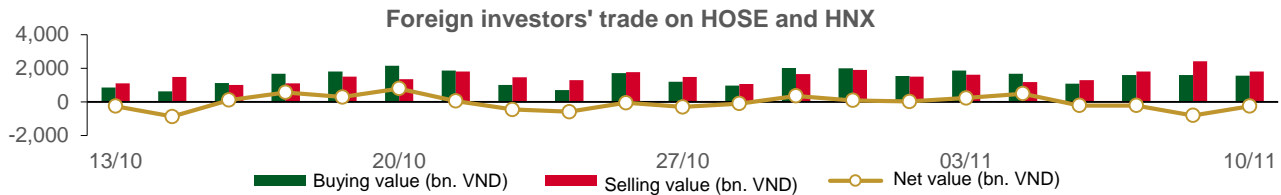
**Statistics on agreement trades****TOP 5 IN AGREEMENT TRADES**

| HOSE     |                           |                               |
|----------|---------------------------|-------------------------------|
| Ticker   | Agreement vol.<br>(share) | Agreement value<br>(bil. VND) |
| MBB      | 20,228,057                | 396.27                        |
| VPB      | 18,063,514                | 362.59                        |
| FUESSVFL | 11,857,700                | 214.73                        |
| VJC      | 1,807,562                 | 182.56                        |
| EIB      | 6,129,149                 | 104.11                        |

| HNX    |                           |                               |
|--------|---------------------------|-------------------------------|
| Ticker | Agreement vol.<br>(share) | Agreement value<br>(bil. VND) |
| HHC    | 697,500                   | 71.24                         |
| GKM    | 780,000                   | 27.60                         |
| HUT    | 640,000                   | 12.52                         |
| NVB    | 382,700                   | 4.32                          |
| KSF    | 50,500                    | 2.05                          |

## Statistics on foreign investors' trade

| Exchange     | Buying vol.<br>(mil. share) | Buying value<br>(bil. VND) | Selling vol.<br>(mil. share) | Selling value<br>(bil. VND) | Net selling/<br>buying value<br>(mil. share) | Net selling/<br>buying value<br>(bil. VND) |
|--------------|-----------------------------|----------------------------|------------------------------|-----------------------------|--|--|
| HOSE         | 67.26                       | 1,558.39                   | 76.20                        | 1,791.27                    | (8.93)                                       | (232.90)                                   |
| HNX          | 0.18                        | 3.64                       | 0.63                         | 17.18                       | (0.45)                                       | (13.54)                                    |
| <b>Total</b> | <b>67.45</b>                | <b>1,562.03</b>            | <b>76.83</b>                 | <b>1,808.45</b>             | <b>(9.38)</b>                                | <b>(246.44)</b>                            |



### TOP 5 BOUGHT-IN

| HOSE   |                  |                        |                            | HNX    |                  |                        |                            |
|--------|------------------|------------------------|----------------------------|--------|------------------|------------------------|----------------------------|
| Ticker | Closing<br>(VND) | Buying vol.<br>(share) | Buying value<br>(bil. VND) | Ticker | Closing<br>(VND) | Buying vol.<br>(share) | Buying value<br>(bil. VND) |
| MBB    | 18,000           | 20,150,057             | 394.94                     | PVI    | 44,900           | 20,000                 | 0.90                       |
| HPG    | 26,500           | 3,495,920              | 93.16                      | TNG    | 18,600           | 42,400                 | 0.81                       |
| VRE    | 23,950           | 3,168,800              | 76.21                      | SLS    | 153,200          | 3,800                  | 0.58                       |
| STB    | 29,500           | 2,427,600              | 72.52                      | LAS    | 12,900           | 37,600                 | 0.49                       |
| VHM    | 42,300           | 1,287,700              | 54.98                      | EVS    | 8,500            | 20,000                 | 0.17                       |

### TOP 5 SOLD-OUT

| HOSE     |                  |                         |                             | HNX    |                  |                         |                             |
|----------|------------------|-------------------------|-----------------------------|--------|------------------|-------------------------|-----------------------------|
| Ticker   | Closing<br>(VND) | Selling vol.<br>(share) | Selling value<br>(bil. VND) | Ticker | Closing<br>(VND) | Selling vol.<br>(share) | Selling value<br>(bil. VND) |
| MBB      | 18,000           | 20,168,600              | 395.28                      | IDC    | 48,500           | 122,600                 | 5.98                        |
| FUESSVFL | 18,030           | 13,400,800              | 242.63                      | CEO    | 23,500           | 172,600                 | 4.12                        |
| VHM      | 42,300           | 2,258,400               | 96.36                       | PVS    | 36,500           | 64,700                  | 2.39                        |
| HPG      | 26,500           | 3,363,818               | 89.71                       | TNG    | 18,600           | 80,000                  | 1.50                        |
| VNM      | 69,600           | 1,244,522               | 87.33                       | MBS    | 20,400           | 29,200                  | 0.61                        |

### TOP 5 NET BUYING

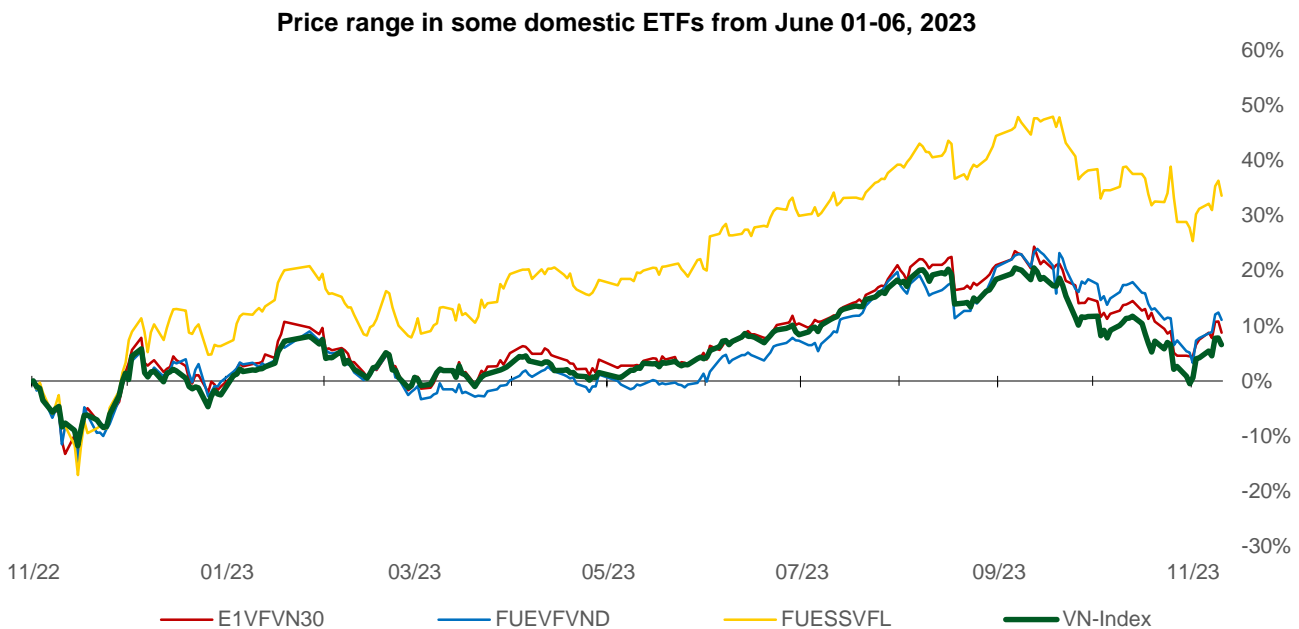
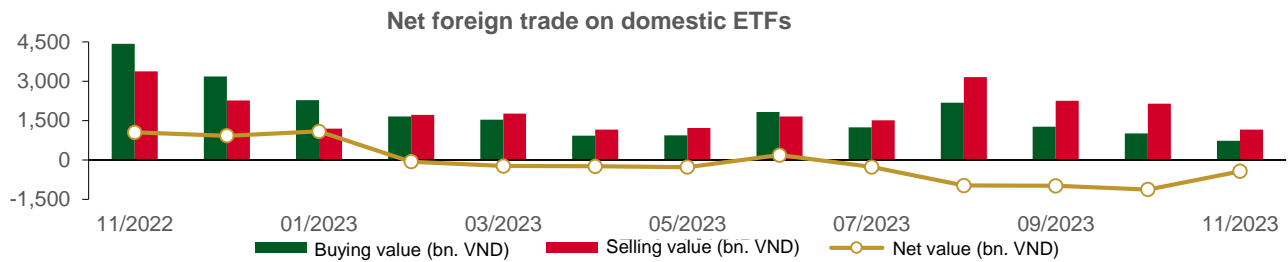
| HOSE     |                  |                     |                        | HNX    |                  |                     |                        |
|----------|------------------|---------------------|------------------------|--------|------------------|---------------------|------------------------|
| Ticker   | Closing<br>(VND) | Net vol.<br>(share) | Net value<br>(bil VND) | Ticker | Closing<br>(VND) | Net vol.<br>(share) | Net value<br>(bil VND) |
| STB      | 29,500           | 1,457,000           | 43.71                  | PVI    | 44,900           | 20,000              | 0.90                   |
| TPB      | 17,000           | 1,746,100           | 29.80                  | SLS    | 153,200          | 3,800               | 0.58                   |
| FUEVFNVD | 24,930           | 1,156,300           | 29.49                  | LAS    | 12,900           | 37,600              | 0.49                   |
| GMD      | 68,900           | 359,900             | 25.01                  | EVS    | 8,500            | 20,000              | 0.17                   |
| HDB      | 18,850           | 1,279,300           | 23.82                  | GIC    | 15,000           | 10,000              | 0.15                   |

### TOP 5 NET SELLING

| HOSE     |                  |                     |                        | HNX    |                  |                     |                        |
|----------|------------------|---------------------|------------------------|--------|------------------|---------------------|------------------------|
| Ticker   | Closing<br>(VND) | Net vol.<br>(share) | Net value<br>(bil VND) | Ticker | Closing<br>(VND) | Net vol.<br>(share) | Net value<br>(bil VND) |
| FUESSVFL | 18,030           | (12,992,800)        | (235.25)               | IDC    | 48,500           | (122,500)           | (5.97)                 |
| VCB      | 86,000           | (668,947)           | (57.77)                | CEO    | 23,500           | (167,800)           | (4.01)                 |
| VNM      | 69,600           | (653,322)           | (45.85)                | PVS    | 36,500           | (64,700)            | (2.39)                 |
| VHM      | 42,300           | (970,700)           | (41.38)                | TNG    | 18,600           | (37,600)            | (0.70)                 |
| KDH      | 31,350           | (916,900)           | (29.07)                | MBS    | 20,400           | (26,700)            | (0.56)                 |

## Statistics on domestic ETF share trade

| PRICE        |         |        |                   |               | FOREIGN TRADE |              |               |                 |
|--------------|---------|--------|-------------------|---------------|---------------|--------------|---------------|-----------------|
| Ticker       | Closing | Change | Volume            | Value         | Ticker        | Buying       | Selling       | Net value       |
|              | VND     | (%)    | (share)           | (bil VND)     |               | (bil VND)    | (bil VND)     | (bil VND)       |
| E1VFN30      | 19,050  | -1.9%  | 2,234,110         | 42.86         | E1VFN30       | 12.51        | 37.48         | (24.97)         |
| FUEMAV30     | 13,240  | -0.5%  | 7,300             | 0.10          | FUEMAV30      | 0.08         | 0.01          | 0.07            |
| FUESSV30     | 13,710  | -1.4%  | 16,620            | 0.23          | FUESSV30      | 0.00         | 0.07          | (0.07)          |
| FUESSV50     | 16,800  | 1.8%   | 3,300             | 0.06          | FUESSV50      | 0.00         | 0.00          | 0.00            |
| FUESSVFL     | 18,030  | -2.0%  | 13,404,414        | 242.69        | FUESSVFL      | 7.38         | 242.63        | (235.25)        |
| FUEVFN30     | 24,930  | -1.2%  | 2,163,874         | 54.73         | FUEVFN30      | 44.25        | 14.77         | 29.49           |
| FUEVN100     | 14,990  | -0.7%  | 52,297            | 0.78          | FUEVN100      | 0.00         | 0.35          | (0.34)          |
| FUEIP100     | 8,200   | -1.1%  | 200               | 0.00          | FUEIP100      | 0.00         | 0.00          | 0.00            |
| FUEKIV30     | 7,330   | 0.7%   | 46,600            | 0.34          | FUEKIV30      | 0.21         | 0.34          | (0.13)          |
| FUEDCMID     | 10,600  | 2.9%   | 24,000            | 0.25          | FUEDCMID      | 0.00         | 0.15          | (0.15)          |
| FUEKIVFS     | 10,330  | -1.9%  | 400               | 0.00          | FUEKIVFS      | 0.00         | 0.00          | (0.00)          |
| FUEMAVND     | 10,550  | 0.0%   | 0                 | 0.00          | FUEMAVND      | 0.00         | 0.00          | 0.00            |
| FUEFCV50     | 12,660  | -5.0%  | 5,200             | 0.07          | FUEFCV50      | 0.00         | 0.00          | 0.00            |
| FUEBFVND     | 12,510  | 0.0%   | 0                 | 0.00          | FUEBFVND      | 0.00         | 0.00          | 0.00            |
| <b>Total</b> |         |        | <b>17,958,315</b> | <b>342.09</b> | <b>Total</b>  | <b>64.43</b> | <b>295.78</b> | <b>(231.35)</b> |



## Statistics on guaranteed warrant trade

| Warrant code (*) | Closing rate (VND) | Change (%) | Matched volume | Day to maturity | Price (VND) | Theoretical buying rate (VND) (**) | Difference from closing rate (VND) | Operating price (VND) | Converting rate n:1 | Matured date |
|------------------|--------------------|------------|----------------|-----------------|-------------|------------------------------------|------------------------------------|-----------------------|---------------------|--------------|
| CACB2302         | 300                | -11.8%     | 13,110         | 20              | 22,400      | 198                                | (102)                              | 22,000                | 4.0                 | 30/11/2023   |
| CACB2303         | 460                | -9.8%      | 13,970         | 80              | 22,400      | 276                                | (184)                              | 22,500                | 4.0                 | 29/01/2024   |
| CACB2304         | 1,420              | -2.7%      | 3,690          | 318             | 22,400      | 714                                | (706)                              | 23,000                | 3.0                 | 23/09/2024   |
| CACB2305         | 720                | -2.7%      | 4,880          | 332             | 22,400      | 299                                | (421)                              | 24,000                | 6.0                 | 07/10/2024   |
| CFPT2304         | 2,090              | -4.1%      | 40,760         | 34              | 91,500      | 2,075                              | (15)                               | 71,170                | 9.9                 | 14/12/2023   |
| CFPT2305         | 2,740              | -4.9%      | 9,320          | 157             | 91,500      | 2,549                              | (191)                              | 67,210                | 9.9                 | 15/04/2024   |
| CFPT2306         | 1,810              | -4.7%      | 22,250         | 20              | 91,500      | 1,715                              | (95)                               | 78,090                | 7.9                 | 30/11/2023   |
| CFPT2307         | 1,950              | -5.8%      | 13,230         | 80              | 91,500      | 1,677                              | (273)                              | 79,070                | 7.9                 | 29/01/2024   |
| CFPT2308         | 1,910              | -2.6%      | 5,710          | 73              | 91,500      | 1,551                              | (359)                              | 80,060                | 7.9                 | 22/01/2024   |
| CFPT2309         | 2,400              | 0.0%       | 0              | 174             | 91,500      | 1,743                              | (657)                              | 80,060                | 7.9                 | 02/05/2024   |
| CFPT2310         | 2,360              | -3.7%      | 1,900          | 265             | 91,500      | 1,508                              | (852)                              | 84,510                | 7.9                 | 01/08/2024   |
| CFPT2311         | 930                | -2.1%      | 15,070         | 125             | 91,500      | 666                                | (264)                              | 88,960                | 9.9                 | 14/03/2024   |
| CFPT2312         | 2,000              | 4.7%       | 70             | 88              | 91,500      | 879                                | (1,121)                            | 91,530                | 4.9                 | 06/02/2024   |
| CFPT2313         | 1,460              | -3.3%      | 15,540         | 271             | 91,500      | 450                                | (1,010)                            | 100,000               | 10.0                | 07/08/2024   |
| CFPT2314         | 1,980              | -2.9%      | 12,760         | 424             | 91,500      | 666                                | (1,314)                            | 100,000               | 10.0                | 07/01/2025   |
| CHDB2302         | 620                | -8.8%      | 37,300         | 11              | 18,850      | 665                                | 45                                 | 16,540                | 3.5                 | 21/11/2023   |
| CHDB2303         | 630                | -7.4%      | 3,410          | 41              | 18,850      | 455                                | (175)                              | 17,500                | 3.5                 | 21/12/2023   |
| CHDB2304         | 910                | -3.2%      | 5,280          | 132             | 18,850      | 463                                | (447)                              | 18,280                | 3.5                 | 21/03/2024   |
| CHDB2305         | 770                | 1.3%       | 3,930          | 104             | 18,850      | 389                                | (381)                              | 18,470                | 3.5                 | 22/02/2024   |
| CHDB2306         | 1,050              | -3.7%      | 1,110          | 227             | 18,850      | 440                                | (610)                              | 19,340                | 3.5                 | 24/06/2024   |
| CHPG2307         | 1,170              | -0.9%      | 72,940         | 48              | 26,500      | 1,046                              | (124)                              | 22,670                | 4.0                 | 28/12/2023   |
| CHPG2309         | 1,410              | -3.4%      | 49,310         | 194             | 26,500      | 1,542                              | 132                                | 24,000                | 3.0                 | 22/05/2024   |
| CHPG2311         | 1,400              | 0.0%       | 133,580        | 19              | 26,500      | 1,328                              | (72)                               | 21,230                | 4.0                 | 29/11/2023   |
| CHPG2312         | 950                | -1.0%      | 24,730         | 48              | 26,500      | 826                                | (124)                              | 23,780                | 4.0                 | 28/12/2023   |
| CHPG2313         | 1,250              | 0.8%       | 79,890         | 110             | 26,500      | 1,076                              | (174)                              | 23,330                | 4.0                 | 28/02/2024   |
| CHPG2314         | 2,880              | -4.6%      | 9,760          | 109             | 26,500      | 2,849                              | (31)                               | 21,450                | 2.0                 | 27/02/2024   |
| CHPG2315         | 1,700              | 30.8%      | 60             | 223             | 26,500      | 759                                | (941)                              | 27,780                | 4.0                 | 20/06/2024   |
| CHPG2316         | 1,190              | -2.5%      | 14,210         | 314             | 26,500      | 832                                | (358)                              | 28,890                | 4.0                 | 19/09/2024   |
| CHPG2317         | 720                | 1.4%       | 8,710          | 104             | 26,500      | 558                                | (162)                              | 26,890                | 4.0                 | 22/02/2024   |
| CHPG2318         | 590                | -4.8%      | 10,770         | 133             | 26,500      | 421                                | (169)                              | 29,220                | 4.0                 | 22/03/2024   |
| CHPG2319         | 810                | 0.0%       | 3,790          | 227             | 26,500      | 565                                | (245)                              | 30,110                | 4.0                 | 24/06/2024   |
| CHPG2320         | 720                | -2.7%      | 40,750         | 34              | 26,500      | 571                                | (149)                              | 27,000                | 2.0                 | 14/12/2023   |
| CHPG2321         | 1,800              | 0.0%       | 2,950          | 157             | 26,500      | 1,338                              | (462)                              | 24,500                | 3.0                 | 15/04/2024   |
| CHPG2322         | 2,490              | -1.6%      | 16,080         | 248             | 26,500      | 1,230                              | (1,260)                            | 30,000                | 2.0                 | 15/07/2024   |
| CHPG2323         | 360                | -7.7%      | 166,450        | 20              | 26,500      | 329                                | (31)                               | 26,000                | 4.0                 | 30/11/2023   |
| CHPG2324         | 520                | -7.1%      | 316,280        | 54              | 26,500      | 494                                | (26)                               | 26,000                | 4.0                 | 03/01/2024   |
| CHPG2325         | 450                | 0.0%       | 271,490        | 80              | 26,500      | 418                                | (32)                               | 27,500                | 4.0                 | 29/01/2024   |
| CHPG2326         | 740                | -3.9%      | 82,100         | 174             | 26,500      | 678                                | (62)                               | 27,500                | 4.0                 | 02/05/2024   |
| CHPG2327         | 850                | -4.5%      | 790            | 73              | 26,500      | 533                                | (317)                              | 29,000                | 2.0                 | 22/01/2024   |
| CHPG2328         | 1,730              | 0.0%       | 0              | 174             | 26,500      | 1,164                              | (566)                              | 28,500                | 2.0                 | 02/05/2024   |
| CHPG2329         | 2,140              | -7.8%      | 1,690          | 265             | 26,500      | 1,461                              | (679)                              | 29,000                | 2.0                 | 01/08/2024   |
| CHPG2330         | 500                | -2.0%      | 2,440          | 125             | 26,500      | 374                                | (126)                              | 31,000                | 3.0                 | 14/03/2024   |
| CHPG2331         | 860                | -4.4%      | 8,040          | 332             | 26,500      | 631                                | (229)                              | 28,000                | 6.0                 | 07/10/2024   |
| CHPG2332         | 880                | -5.4%      | 38,380         | 363             | 26,500      | 635                                | (245)                              | 28,500                | 6.0                 | 07/11/2024   |
| CHPG2333         | 890                | -3.3%      | 17,630         | 391             | 26,500      | 636                                | (254)                              | 29,000                | 6.0                 | 05/12/2024   |
| CHPG2334         | 690                | -1.4%      | 31,740         | 424             | 26,500      | 482                                | (208)                              | 29,500                | 8.0                 | 07/01/2025   |
| CHPG2335         | 820                | -3.5%      | 3,390          | 83              | 26,500      | 468                                | (352)                              | 27,110                | 4.0                 | 01/02/2024   |
| CHPG2336         | 1,090              | -9.9%      | 20             | 174             | 26,500      | 618                                | (472)                              | 28,110                | 4.0                 | 02/05/2024   |
| CHPG2337         | 1,190              | -8.5%      | 1,150          | 236             | 26,500      | 617                                | (573)                              | 29,670                | 4.0                 | 03/07/2024   |
| CHPG2338         | 1,480              | -3.3%      | 10             | 328             | 26,500      | 763                                | (717)                              | 30,000                | 4.0                 | 03/10/2024   |
| CHPG2339         | 4,340              | -3.1%      | 110            | 419             | 26,500      | 1,793                              | (2,547)                            | 30,220                | 2.0                 | 02/01/2025   |
| CMBB2305         | 530                | 0.0%       | 80             | 48              | 18,000      | 430                                | (100)                              | 14,420                | 8.5                 | 28/12/2023   |
| CMBB2306         | 1,700              | -4.5%      | 29,290         | 194             | 18,000      | 1,328                              | (372)                              | 16,970                | 1.7                 | 22/05/2024   |
| CMBB2307         | 190                | -24.0%     | 31,440         | 20              | 18,000      | 133                                | (57)                               | 18,000                | 4.0                 | 30/11/2023   |



|          |       |        |         |     |        |       |         |        |      |            |
|----------|-------|--------|---------|-----|--------|-------|---------|--------|------|------------|
| CMBB2308 | 320   | -13.5% | 52,720  | 80  | 18,000 | 212   | (108)   | 18,500 | 4.0  | 29/01/2024 |
| CMBB2309 | 490   | -9.3%  | 20,880  | 174 | 18,000 | 296   | (194)   | 19,000 | 4.0  | 02/05/2024 |
| CMBB2310 | 590   | -11.9% | 48,350  | 73  | 18,000 | 307   | (283)   | 19,000 | 2.0  | 22/01/2024 |
| CMBB2311 | 1,080 | -7.7%  | 11,000  | 174 | 18,000 | 593   | (487)   | 19,000 | 2.0  | 02/05/2024 |
| CMBB2312 | 1,370 | -2.8%  | 480     | 265 | 18,000 | 702   | (668)   | 19,500 | 2.0  | 01/08/2024 |
| CMBB2313 | 420   | 0.0%   | 0       | 125 | 18,000 | 199   | (221)   | 21,000 | 2.0  | 14/03/2024 |
| CMBB2314 | 690   | -6.8%  | 7,400   | 271 | 18,000 | 315   | (375)   | 20,000 | 4.0  | 07/08/2024 |
| CMBB2315 | 960   | -3.0%  | 11,110  | 424 | 18,000 | 452   | (508)   | 20,000 | 4.0  | 07/01/2025 |
| CMBB2316 | 880   | 3.5%   | 770     | 174 | 18,000 | 161   | (719)   | 18,000 | 10.0 | 02/05/2024 |
| CMSN2302 | 1,480 | -1.3%  | 4,450   | 194 | 61,700 | 885   | (595)   | 66,000 | 6.0  | 22/05/2024 |
| CMSN2304 | 80    | -70.4% | 30,790  | 19  | 61,700 | 2     | (78)    | 75,680 | 10.0 | 29/11/2023 |
| CMSN2305 | 360   | -12.2% | 1,340   | 110 | 61,700 | 110   | (250)   | 76,790 | 10.0 | 28/02/2024 |
| CMSN2306 | 260   | -16.1% | 7,150   | 104 | 61,700 | 68    | (192)   | 80,000 | 10.0 | 22/02/2024 |
| CMSN2307 | 610   | -11.6% | 1,480   | 227 | 61,700 | 188   | (422)   | 83,000 | 10.0 | 24/06/2024 |
| CMSN2308 | 30    | -89.3% | 62,480  | 20  | 61,700 | 0     | (30)    | 80,000 | 8.0  | 30/11/2023 |
| CMSN2309 | 90    | -73.5% | 144,000 | 80  | 61,700 | 22    | (68)    | 85,000 | 8.0  | 29/01/2024 |
| CMSN2310 | 150   | -59.5% | 22,700  | 73  | 61,700 | 24    | (126)   | 83,000 | 8.0  | 22/01/2024 |
| CMSN2311 | 500   | -5.7%  | 10,310  | 265 | 61,700 | 207   | (293)   | 88,500 | 8.0  | 01/08/2024 |
| CMSN2312 | 210   | -60.4% | 17,550  | 88  | 61,700 | 6     | (204)   | 98,100 | 5.0  | 06/02/2024 |
| CMSN2313 | 770   | -6.1%  | 32,110  | 332 | 61,700 | 373   | (397)   | 80,000 | 10.0 | 07/10/2024 |
| CMSN2314 | 400   | -9.1%  | 160     | 83  | 61,700 | 50    | (350)   | 79,000 | 10.0 | 01/02/2024 |
| CMSN2315 | 550   | -15.4% | 10      | 174 | 61,700 | 135   | (415)   | 82,000 | 10.0 | 02/05/2024 |
| CMSN2316 | 1,270 | -8.0%  | 10      | 328 | 61,700 | 297   | (973)   | 83,980 | 10.0 | 03/10/2024 |
| CMSN2317 | 1,930 | -3.5%  | 310     | 419 | 61,700 | 443   | (1,487) | 86,870 | 8.0  | 02/01/2025 |
| CMWG2304 | 400   | -18.4% | 7,510   | 48  | 39,400 | 316   | (84)    | 33,680 | 19.8 | 28/12/2023 |
| CMWG2305 | 1,850 | -1.1%  | 38,000  | 194 | 39,400 | 1,728 | (122)   | 35,660 | 4.0  | 22/05/2024 |
| CMWG2306 | 40    | -81.0% | 90,040  | 20  | 39,400 | 1     | (39)    | 50,000 | 8.0  | 30/11/2023 |
| CMWG2307 | 250   | -3.9%  | 14,290  | 80  | 39,400 | 59    | (191)   | 50,000 | 8.0  | 29/01/2024 |
| CMWG2308 | 170   | -55.3% | 35,210  | 73  | 39,400 | 51    | (119)   | 52,000 | 5.0  | 22/01/2024 |
| CMWG2309 | 380   | -11.6% | 58,110  | 174 | 39,400 | 191   | (189)   | 54,000 | 5.0  | 02/05/2024 |
| CMWG2310 | 630   | -11.3% | 12,360  | 265 | 39,400 | 339   | (291)   | 54,500 | 5.0  | 01/08/2024 |
| CMWG2311 | 330   | -49.2% | 32,200  | 88  | 39,400 | 31    | (299)   | 58,900 | 3.0  | 06/02/2024 |
| CMWG2312 | 690   | -14.8% | 11,580  | 165 | 39,400 | 227   | (463)   | 56,000 | 3.0  | 23/04/2024 |
| CMWG2313 | 700   | -10.3% | 68,860  | 271 | 39,400 | 425   | (275)   | 50,000 | 6.0  | 07/08/2024 |
| CMWG2314 | 580   | -7.9%  | 144,000 | 424 | 39,400 | 355   | (225)   | 52,000 | 10.0 | 07/01/2025 |
| CMWG2315 | 680   | 7.9%   | 10      | 174 | 39,400 | 86    | (594)   | 48,890 | 20.0 | 02/05/2024 |
| CMWG2316 | 1,090 | -5.2%  | 1,010   | 285 | 39,400 | 525   | (565)   | 48,000 | 6.0  | 21/08/2024 |
| CNVL2302 | 160   | -15.8% | 21,740  | 11  | 16,000 | 143   | (17)    | 16,330 | 4.0  | 21/11/2023 |
| CNVL2303 | 940   | -1.1%  | 1,950   | 132 | 16,000 | 479   | (461)   | 17,330 | 4.0  | 21/03/2024 |
| CNVL2304 | 620   | -8.8%  | 13,590  | 42  | 16,000 | 397   | (223)   | 15,560 | 4.0  | 22/12/2023 |
| CNVL2305 | 1,400 | 1.5%   | 4,850   | 227 | 16,000 | 703   | (697)   | 17,000 | 4.0  | 24/06/2024 |
| CPDR2302 | 1,790 | 7.2%   | 80,740  | 11  | 25,650 | 1,750 | (40)    | 18,670 | 4.0  | 21/11/2023 |
| CPDR2303 | 2,180 | 15.3%  | 98,290  | 132 | 25,650 | 1,763 | (417)   | 19,890 | 4.0  | 21/03/2024 |
| CPDR2304 | 2,020 | 4.7%   | 55,550  | 42  | 25,650 | 1,947 | (73)    | 18,000 | 4.0  | 22/12/2023 |
| CPDR2305 | 2,230 | 3.7%   | 51,860  | 227 | 25,650 | 1,936 | (294)   | 20,220 | 4.0  | 24/06/2024 |
| CPOW2302 | 30    | -86.4% | 4,990   | 11  | 11,700 | 0     | (30)    | 14,330 | 2.0  | 21/11/2023 |
| CPOW2303 | 90    | -62.5% | 610     | 41  | 11,700 | 2     | (88)    | 15,330 | 2.0  | 21/12/2023 |
| CPOW2304 | 200   | -33.3% | 3,760   | 132 | 11,700 | 26    | (174)   | 16,330 | 2.0  | 21/03/2024 |
| CPOW2305 | 220   | -29.0% | 26,170  | 104 | 11,700 | 42    | (178)   | 15,000 | 2.0  | 22/02/2024 |
| CPOW2306 | 470   | 6.8%   | 600     | 227 | 11,700 | 104   | (366)   | 16,000 | 2.0  | 24/06/2024 |
| CPOW2307 | 90    | -62.5% | 60,160  | 34  | 11,700 | 22    | (68)    | 13,500 | 2.0  | 14/12/2023 |
| CPOW2308 | 350   | 2.9%   | 276,460 | 157 | 11,700 | 184   | (166)   | 12,000 | 5.0  | 15/04/2024 |
| CPOW2309 | 490   | 8.9%   | 16,760  | 187 | 11,700 | 159   | (331)   | 14,500 | 2.0  | 15/05/2024 |
| CPOW2310 | 450   | -25.0% | 18,110  | 73  | 11,700 | 103   | (347)   | 14,000 | 1.0  | 22/01/2024 |
| CPOW2311 | 170   | -65.3% | 10,290  | 88  | 11,700 | 36    | (134)   | 15,500 | 1.0  | 06/02/2024 |
| CPOW2312 | 750   | 0.0%   | 30,200  | 83  | 11,700 | 267   | (483)   | 12,220 | 2.0  | 01/02/2024 |
| CPOW2313 | 1,230 | 4.2%   | 10      | 236 | 11,700 | 419   | (811)   | 12,890 | 2.0  | 03/07/2024 |
| CPOW2314 | 1,500 | 8.7%   | 10      | 328 | 11,700 | 506   | (994)   | 13,110 | 2.0  | 03/10/2024 |
| CPOW2315 | 1,690 | 7.6%   | 10      | 419 | 11,700 | 558   | (1,132) | 13,460 | 2.0  | 02/01/2025 |
| CSHB2301 | 910   | -11.7% | 6,470   | 83  | 11,150 | 360   | (550)   | 11,330 | 2.0  | 01/02/2024 |

|          |       |        |         |     |        |       |         |        |      |            |
|----------|-------|--------|---------|-----|--------|-------|---------|--------|------|------------|
| CSHB2302 | 1,290 | -4.4%  | 10      | 174 | 11,150 | 415   | (875)   | 12,000 | 2.0  | 02/05/2024 |
| CSHB2303 | 1,490 | -3.9%  | 10      | 235 | 11,150 | 455   | (1,035) | 12,350 | 2.0  | 02/07/2024 |
| CSHB2304 | 900   | -2.2%  | 20      | 236 | 11,150 | 232   | (668)   | 11,670 | 5.0  | 03/07/2024 |
| CSHB2305 | 930   | -1.1%  | 20      | 328 | 11,150 | 221   | (709)   | 12,560 | 5.0  | 03/10/2024 |
| CSHB2306 | 2,120 | -0.9%  | 20      | 419 | 11,150 | 630   | (1,490) | 12,780 | 2.0  | 02/01/2025 |
| CSTB2305 | 540   | -6.9%  | 200     | 48  | 29,500 | 403   | (137)   | 29,110 | 5.0  | 28/12/2023 |
| CSTB2306 | 2,430 | -2.4%  | 2,620   | 194 | 29,500 | 1,754 | (676)   | 30,000 | 2.0  | 22/05/2024 |
| CSTB2308 | 480   | -14.3% | 40,530  | 19  | 29,500 | 437   | (43)    | 27,800 | 5.0  | 29/11/2023 |
| CSTB2309 | 400   | -4.8%  | 8,700   | 48  | 29,500 | 273   | (127)   | 30,560 | 5.0  | 28/12/2023 |
| CSTB2310 | 650   | -3.0%  | 51,140  | 110 | 29,500 | 483   | (167)   | 30,330 | 5.0  | 28/02/2024 |
| CSTB2311 | 1,120 | -11.8% | 1,370   | 18  | 29,500 | 1,116 | (4)     | 27,700 | 2.0  | 28/11/2023 |
| CSTB2312 | 860   | -4.4%  | 1,000   | 223 | 29,500 | 513   | (347)   | 33,330 | 5.0  | 20/06/2024 |
| CSTB2313 | 950   | -5.0%  | 180     | 314 | 29,500 | 539   | (411)   | 35,560 | 5.0  | 19/09/2024 |
| CSTB2314 | 530   | -3.6%  | 14,960  | 104 | 29,500 | 329   | (201)   | 32,220 | 5.0  | 22/02/2024 |
| CSTB2315 | 500   | -3.9%  | 15,340  | 133 | 29,500 | 279   | (221)   | 34,330 | 5.0  | 22/03/2024 |
| CSTB2316 | 670   | -5.6%  | 1,010   | 227 | 29,500 | 361   | (309)   | 36,330 | 5.0  | 24/06/2024 |
| CSTB2317 | 550   | -5.2%  | 27,770  | 34  | 29,500 | 435   | (115)   | 30,000 | 3.0  | 14/12/2023 |
| CSTB2318 | 870   | -1.1%  | 4,950   | 187 | 29,500 | 664   | (206)   | 32,000 | 4.0  | 15/05/2024 |
| CSTB2319 | 760   | -7.3%  | 8,670   | 157 | 29,500 | 517   | (243)   | 27,000 | 9.0  | 15/04/2024 |
| CSTB2320 | 480   | -7.7%  | 143,940 | 20  | 29,500 | 434   | (46)    | 28,500 | 4.0  | 30/11/2023 |
| CSTB2321 | 790   | -2.5%  | 26,200  | 80  | 29,500 | 652   | (138)   | 29,000 | 4.0  | 29/01/2024 |
| CSTB2322 | 1,380 | 9.5%   | 2,130   | 174 | 29,500 | 826   | (554)   | 30,000 | 4.0  | 02/05/2024 |
| CSTB2323 | 1,000 | 12.4%  | 680     | 73  | 29,500 | 625   | (375)   | 29,000 | 4.0  | 22/01/2024 |
| CSTB2324 | 1,300 | 0.0%   | 0       | 174 | 29,500 | 723   | (577)   | 31,000 | 4.0  | 02/05/2024 |
| CSTB2325 | 1,650 | -2.4%  | 40      | 265 | 29,500 | 892   | (758)   | 31,500 | 4.0  | 01/08/2024 |
| CSTB2326 | 1,910 | 0.0%   | 0       | 165 | 29,500 | 1,050 | (860)   | 33,000 | 2.0  | 23/04/2024 |
| CSTB2327 | 820   | -4.7%  | 138,890 | 271 | 29,500 | 573   | (247)   | 32,000 | 6.0  | 07/08/2024 |
| CSTB2328 | 800   | -1.2%  | 7,510   | 424 | 29,500 | 535   | (265)   | 33,000 | 8.0  | 07/01/2025 |
| CSTB2329 | 680   | -11.7% | 500     | 83  | 29,500 | 366   | (314)   | 31,890 | 4.0  | 01/02/2024 |
| CSTB2330 | 950   | -10.4% | 500     | 174 | 29,500 | 475   | (475)   | 34,000 | 4.0  | 02/05/2024 |
| CSTB2331 | 870   | -1.1%  | 50      | 236 | 29,500 | 441   | (429)   | 35,000 | 5.0  | 03/07/2024 |
| CSTB2332 | 1,140 | 5.6%   | 10      | 328 | 29,500 | 543   | (597)   | 35,890 | 5.0  | 03/10/2024 |
| CSTB2333 | 4,580 | 7.0%   | 10      | 419 | 29,500 | 1,657 | (2,923) | 36,110 | 2.0  | 02/01/2025 |
| CSTB2334 | 3,060 | -1.3%  | 21,200  | 285 | 29,500 | 1,928 | (1,132) | 27,000 | 3.0  | 21/08/2024 |
| CTCB2302 | 2,050 | -6.4%  | 27,780  | 194 | 31,050 | 1,911 | (139)   | 27,000 | 3.0  | 22/05/2024 |
| CTCB2303 | 140   | -63.2% | 203,940 | 20  | 31,050 | 72    | (68)    | 33,500 | 4.0  | 30/11/2023 |
| CTCB2304 | 400   | -11.1% | 39,670  | 80  | 31,050 | 232   | (168)   | 34,500 | 4.0  | 29/01/2024 |
| CTCB2305 | 710   | -2.7%  | 8,290   | 73  | 31,050 | 411   | (299)   | 32,000 | 4.0  | 22/01/2024 |
| CTCB2306 | 1,100 | -7.6%  | 2,760   | 174 | 31,050 | 705   | (395)   | 32,000 | 4.0  | 02/05/2024 |
| CTCB2307 | 1,250 | -3.9%  | 2,150   | 265 | 31,050 | 715   | (535)   | 34,000 | 4.0  | 01/08/2024 |
| CTCB2308 | 530   | -3.6%  | 10,900  | 125 | 31,050 | 284   | (246)   | 37,000 | 3.0  | 14/03/2024 |
| CTCB2309 | 1,570 | 13.8%  | 2,000   | 318 | 31,050 | 979   | (591)   | 35,000 | 3.0  | 23/09/2024 |
| CTCB2310 | 670   | -4.3%  | 28,010  | 332 | 31,050 | 380   | (290)   | 35,000 | 8.0  | 07/10/2024 |
| CTPB2303 | 340   | 6.3%   | 23,210  | 48  | 17,000 | 219   | (121)   | 15,810 | 7.2  | 28/12/2023 |
| CTPB2304 | 860   | 6.2%   | 10      | 174 | 17,000 | 239   | (621)   | 18,890 | 4.0  | 02/05/2024 |
| CTPB2305 | 970   | 2.1%   | 10      | 236 | 17,000 | 276   | (694)   | 19,330 | 4.0  | 03/07/2024 |
| CTPB2306 | 2,250 | -3.4%  | 40      | 328 | 17,000 | 650   | (1,600) | 19,890 | 2.0  | 03/10/2024 |
| CVHM2302 | 1,330 | -3.6%  | 11,030  | 194 | 42,300 | 618   | (712)   | 50,000 | 4.0  | 22/05/2024 |
| CVHM2304 | 40    | -81.0% | 4,880   | 19  | 42,300 | 1     | (39)    | 53,560 | 8.0  | 29/11/2023 |
| CVHM2305 | 230   | -4.2%  | 5,140   | 110 | 42,300 | 49    | (181)   | 57,780 | 8.0  | 28/02/2024 |
| CVHM2306 | 300   | -23.1% | 50      | 104 | 42,300 | 26    | (274)   | 60,670 | 8.0  | 22/02/2024 |
| CVHM2307 | 410   | -14.6% | 920     | 227 | 42,300 | 109   | (301)   | 62,670 | 8.0  | 24/06/2024 |
| CVHM2308 | 30    | -85.7% | 11,720  | 20  | 42,300 | 0     | (30)    | 61,000 | 8.0  | 30/11/2023 |
| CVHM2309 | 80    | -65.2% | 21,620  | 80  | 42,300 | 9     | (71)    | 62,000 | 8.0  | 29/01/2024 |
| CVHM2310 | 90    | -74.3% | 84,260  | 73  | 42,300 | 22    | (68)    | 59,000 | 5.0  | 22/01/2024 |
| CVHM2311 | 600   | 1.7%   | 8,680   | 265 | 42,300 | 276   | (324)   | 60,500 | 5.0  | 01/08/2024 |
| CVHM2312 | 430   | -14.0% | 59,900  | 174 | 42,300 | 227   | (203)   | 56,000 | 5.0  | 02/05/2024 |
| CVHM2313 | 650   | -5.8%  | 41,800  | 332 | 42,300 | 406   | (244)   | 50,000 | 10.0 | 07/10/2024 |
| CVHM2314 | 640   | -5.9%  | 28,640  | 83  | 42,300 | 144   | (496)   | 48,890 | 8.0  | 01/02/2024 |
| CVHM2315 | 810   | 2.5%   | 10      | 174 | 42,300 | 252   | (558)   | 50,890 | 8.0  | 02/05/2024 |

|          |       |        |         |     |        |       |         |        |      |            |
|----------|-------|--------|---------|-----|--------|-------|---------|--------|------|------------|
| CVHM2316 | 960   | 3.2%   | 20      | 236 | 42,300 | 335   | (625)   | 51,230 | 8.0  | 03/07/2024 |
| CVHM2317 | 1,160 | -1.7%  | 20      | 328 | 42,300 | 426   | (734)   | 52,350 | 8.0  | 03/10/2024 |
| CVHM2318 | 2,230 | 1.8%   | 1,950   | 419 | 42,300 | 804   | (1,426) | 53,460 | 5.0  | 02/01/2025 |
| CVIB2302 | 1,400 | -3.5%  | 3,230   | 194 | 19,000 | 1,114 | (286)   | 19,150 | 1.7  | 22/05/2024 |
| CVIB2303 | 80    | -61.9% | 26,380  | 20  | 19,000 | 36    | (44)    | 20,500 | 4.0  | 30/11/2023 |
| CVIB2304 | 840   | -4.6%  | 3,370   | 271 | 19,000 | 479   | (361)   | 20,000 | 4.0  | 07/08/2024 |
| CVIB2305 | 620   | -4.6%  | 2,200   | 424 | 19,000 | 309   | (311)   | 22,000 | 6.0  | 07/01/2025 |
| CVIB2306 | 2,350 | -4.1%  | 230     | 285 | 19,000 | 1,740 | (610)   | 17,000 | 2.0  | 21/08/2024 |
| CVIC2302 | 30    | -87.5% | 33,820  | 11  | 44,950 | 0     | (30)    | 55,670 | 8.0  | 21/11/2023 |
| CVIC2303 | 340   | -2.9%  | 160     | 41  | 44,950 | 9     | (331)   | 57,780 | 8.0  | 21/12/2023 |
| CVIC2304 | 520   | 4.0%   | 1,160   | 132 | 44,950 | 84    | (436)   | 59,890 | 8.0  | 21/03/2024 |
| CVIC2305 | 400   | 0.0%   | 0       | 104 | 44,950 | 43    | (357)   | 61,110 | 8.0  | 22/02/2024 |
| CVIC2306 | 1,100 | 15.8%  | 2,770   | 227 | 44,950 | 160   | (940)   | 62,220 | 8.0  | 24/06/2024 |
| CVIC2307 | 90    | -64.0% | 77,290  | 20  | 44,950 | 0     | (90)    | 58,500 | 8.0  | 30/11/2023 |
| CVIC2308 | 660   | -7.0%  | 66,890  | 271 | 44,950 | 439   | (221)   | 50,000 | 10.0 | 07/08/2024 |
| CVIC2309 | 710   | -4.1%  | 15,120  | 332 | 44,950 | 447   | (263)   | 52,000 | 10.0 | 07/10/2024 |
| CVIC2310 | 720   | -7.7%  | 10,060  | 83  | 44,950 | 200   | (520)   | 50,000 | 8.0  | 01/02/2024 |
| CVIC2311 | 880   | -2.2%  | 220     | 111 | 44,950 | 200   | (680)   | 52,000 | 8.0  | 29/02/2024 |
| CVIC2312 | 1,050 | 1.0%   | 50      | 236 | 44,950 | 325   | (725)   | 52,350 | 10.0 | 03/07/2024 |
| CVIC2313 | 1,260 | -0.8%  | 510     | 328 | 44,950 | 401   | (859)   | 53,460 | 10.0 | 03/10/2024 |
| CVIC2314 | 3,030 | -1.6%  | 10      | 419 | 44,950 | 931   | (2,099) | 54,570 | 5.0  | 02/01/2025 |
| CVNM2303 | 420   | -28.8% | 25,670  | 19  | 69,600 | 263   | (157)   | 67,790 | 9.7  | 29/11/2023 |
| CVNM2304 | 860   | -9.5%  | 13,220  | 110 | 69,600 | 419   | (441)   | 68,760 | 9.7  | 28/02/2024 |
| CVNM2305 | 720   | -12.2% | 4,430   | 104 | 69,600 | 294   | (426)   | 71,020 | 9.7  | 22/02/2024 |
| CVNM2306 | 1,100 | -6.0%  | 20,660  | 227 | 69,600 | 392   | (708)   | 73,170 | 9.7  | 24/06/2024 |
| CVNM2307 | 130   | -66.7% | 42,260  | 20  | 69,600 | 17    | (113)   | 75,000 | 8.0  | 30/11/2023 |
| CVNM2308 | 1,180 | -4.1%  | 2,790   | 174 | 69,600 | 620   | (560)   | 69,000 | 8.0  | 02/05/2024 |
| CVNM2309 | 610   | 0.0%   | 0       | 88  | 69,600 | 51    | (559)   | 82,000 | 5.0  | 06/02/2024 |
| CVNM2310 | 970   | -11.0% | 47,560  | 271 | 69,600 | 223   | (747)   | 80,000 | 10.0 | 07/08/2024 |
| CVNM2311 | 1,400 | -3.5%  | 10,780  | 424 | 69,600 | 367   | (1,033) | 80,000 | 10.0 | 07/01/2025 |
| CVNM2312 | 450   | -10.0% | 10      | 83  | 69,600 | 37    | (413)   | 80,000 | 10.0 | 01/02/2024 |
| CVNM2313 | 700   | -4.1%  | 30      | 174 | 69,600 | 69    | (631)   | 83,980 | 10.0 | 02/05/2024 |
| CVNM2314 | 1,370 | -4.2%  | 510     | 328 | 69,600 | 180   | (1,190) | 86,890 | 8.0  | 03/10/2024 |
| CVNM2315 | 4,050 | -1.7%  | 2,000   | 419 | 69,600 | 445   | (3,605) | 88,890 | 4.0  | 02/01/2025 |
| CVPB2304 | 300   | -9.1%  | 16,580  | 48  | 19,550 | 227   | (73)    | 16,200 | 15.3 | 28/12/2023 |
| CVPB2305 | 1,540 | -8.3%  | 15,150  | 157 | 19,550 | 1,125 | (415)   | 17,160 | 2.9  | 15/04/2024 |
| CVPB2306 | 800   | -18.4% | 35,100  | 34  | 19,550 | 587   | (213)   | 19,060 | 1.9  | 14/12/2023 |
| CVPB2307 | 170   | -19.1% | 884,520 | 20  | 19,550 | 79    | (91)    | 20,490 | 3.8  | 30/11/2023 |
| CVPB2308 | 300   | -21.1% | 376,210 | 80  | 19,550 | 199   | (101)   | 20,970 | 3.8  | 29/01/2024 |
| CVPB2309 | 500   | -12.3% | 36,310  | 174 | 19,550 | 323   | (177)   | 21,450 | 3.8  | 02/05/2024 |
| CVPB2310 | 830   | -12.6% | 10      | 73  | 19,550 | 453   | (377)   | 20,490 | 1.9  | 22/01/2024 |
| CVPB2311 | 1,800 | 0.0%   | 0       | 174 | 19,550 | 1,042 | (758)   | 19,540 | 1.9  | 02/05/2024 |
| CVPB2312 | 1,980 | -3.9%  | 810     | 265 | 19,550 | 1,188 | (792)   | 20,020 | 1.9  | 01/08/2024 |
| CVPB2313 | 560   | 0.0%   | 0       | 88  | 19,550 | 161   | (399)   | 23,260 | 1.9  | 06/02/2024 |
| CVPB2314 | 690   | -8.0%  | 6,340   | 271 | 19,550 | 342   | (348)   | 22,880 | 3.8  | 07/08/2024 |
| CVPB2315 | 630   | -7.4%  | 4,770   | 424 | 19,550 | 318   | (312)   | 23,350 | 5.7  | 07/01/2025 |
| CVPB2316 | 750   | -6.3%  | 10      | 174 | 19,550 | 200   | (550)   | 22,360 | 4.8  | 02/05/2024 |
| CVPB2317 | 820   | -6.8%  | 210     | 236 | 19,550 | 299   | (521)   | 22,880 | 3.8  | 03/07/2024 |
| CVPB2318 | 1,050 | -5.4%  | 10      | 328 | 19,550 | 370   | (680)   | 23,420 | 3.8  | 03/10/2024 |
| CVPB2319 | 3,190 | -0.3%  | 10      | 419 | 19,550 | 860   | (2,330) | 23,950 | 1.9  | 02/01/2025 |
| CVRE2303 | 1,350 | -2.2%  | 4,760   | 194 | 23,950 | 775   | (575)   | 25,000 | 3.0  | 22/05/2024 |
| CVRE2305 | 90    | -60.9% | 9,200   | 19  | 23,950 | 16    | (74)    | 27,110 | 5.0  | 29/11/2023 |
| CVRE2306 | 280   | 0.0%   | 0       | 110 | 23,950 | 101   | (179)   | 29,330 | 5.0  | 28/02/2024 |
| CVRE2307 | 190   | -5.0%  | 71,130  | 104 | 23,950 | 68    | (122)   | 30,330 | 5.0  | 22/02/2024 |
| CVRE2308 | 460   | 0.0%   | 2,140   | 227 | 23,950 | 176   | (284)   | 31,330 | 5.0  | 24/06/2024 |
| CVRE2309 | 30    | -81.3% | 102,280 | 20  | 23,950 | 2     | (28)    | 29,000 | 6.0  | 30/11/2023 |
| CVRE2310 | 90    | -10.0% | 120,640 | 80  | 23,950 | 40    | (50)    | 30,000 | 6.0  | 29/01/2024 |
| CVRE2311 | 180   | -45.5% | 56,580  | 73  | 23,950 | 75    | (105)   | 29,000 | 4.0  | 22/01/2024 |
| CVRE2312 | 590   | -6.4%  | 15,020  | 174 | 23,950 | 336   | (254)   | 27,500 | 4.0  | 02/05/2024 |
| CVRE2313 | 710   | -4.1%  | 300     | 265 | 23,950 | 360   | (350)   | 29,500 | 4.0  | 01/08/2024 |

|          |       |        |        |     |        |     |         |        |     |            |
|----------|-------|--------|--------|-----|--------|-----|---------|--------|-----|------------|
| CVRE2314 | 120   | -65.7% | 18,700 | 88  | 23,950 | 20  | (100)   | 34,100 | 3.0 | 06/02/2024 |
| CVRE2315 | 410   | -2.4%  | 37,240 | 332 | 23,950 | 213 | (197)   | 30,000 | 8.0 | 07/10/2024 |
| CVRE2316 | 670   | 0.0%   | 30     | 83  | 23,950 | 92  | (578)   | 29,000 | 4.0 | 01/02/2024 |
| CVRE2317 | 670   | -4.3%  | 10,020 | 174 | 23,950 | 201 | (469)   | 30,000 | 4.0 | 02/05/2024 |
| CVRE2318 | 830   | -2.4%  | 10     | 236 | 23,950 | 246 | (584)   | 31,000 | 4.0 | 03/07/2024 |
| CVRE2319 | 1,060 | -1.9%  | 10     | 328 | 23,950 | 330 | (730)   | 31,780 | 4.0 | 03/10/2024 |
| CVRE2320 | 3,320 | -0.6%  | 10     | 419 | 23,950 | 826 | (2,494) | 32,330 | 2.0 | 02/01/2025 |

(\*) All are buying stock rights, conducted in European style and payment method is in cash

(\*\*) PHS evaluates in Black-Scholes model

## LIST OF CODES ANALYZED

| Ticker              | Exchange | Market price | Reasonable price * | Report date | 2022F EAT (bil. VND) | PE forward | PB forward |
|---------------------|----------|--------------|--------------------|-------------|----------------------|------------|------------|
| <a href="#">TCB</a> | HOSE     | 31,050       | 45,100             | 10/11/2023  | 18,401               | -          | -          |
| <a href="#">FMC</a> | HOSE     | 44,800       | 59,400             | 07/11/2023  | 272                  | 10.4       | 1.3        |
| <a href="#">DCM</a> | HOSE     | 30,700       | 38,900             | 25/10/2023  | 1,823                | 11.3       | 1.9        |
| <a href="#">KDH</a> | HOSE     | 31,350       | 40,900             | 23/10/2023  | 1,008                | 29.1       | 2.1        |
| <a href="#">VCG</a> | HOSE     | 23,000       | 33,000             | 18/10/2023  | 492                  | 30.9       | 1.7        |
| <a href="#">VRE</a> | HOSE     | 23,950       | 39,400             | 16/10/2023  | 4,036                | 22.7       | 2.6        |
| <a href="#">MWG</a> | HOSE     | 39,400       | 65,900             | 11/10/2023  | 491                  | 273.4      | 4.1        |
| <a href="#">NLG</a> | HOSE     | 36,500       | 40,900             | 28/09/2023  | 642                  | 22.9       | 1.4        |
| <a href="#">POW</a> | HOSE     | 11,700       | 14,800             | 22/09/2023  | 1,817                | 23.6       | 1.1        |
| <a href="#">VPB</a> | HOSE     | 19,550       | 24,400             | 21/09/2023  | 14,007               | 11.8       | 1.0        |
| <a href="#">ANV</a> | HOSE     | 29,000       | 44,600             | 20/09/2023  | 574                  | 10.3       | 1.7        |
| <a href="#">SAB</a> | HOSE     | 62,400       | 175,900            | 11/09/2023  | 4,552                | 25.9       | 4.5        |
| <a href="#">BSR</a> | UPCOM    | 18,834       | 20,200             | 30/08/2023  | 7,288                | 8.7        | 1.1        |
| <a href="#">VNM</a> | HOSE     | 69,600       | 73,100             | 25/08/2023  | 9,365                | 16.3       | 4.9        |
| <a href="#">MSH</a> | HOSE     | 36,750       | 49,350             | 23/08/2023  | 270                  | 13.7       | 2.0        |
| <a href="#">DPR</a> | HOSE     | 31,200       | 88,000             | 18/08/2023  | 302                  | 10.4       | 1.1        |
| <a href="#">GAS</a> | HOSE     | 78,700       | 111,000            | 17/08/2023  | 13,268               | 16.2       | 3.2        |
| <a href="#">DGW</a> | HOSE     | 49,450       | 50,800             | 14/08/2023  | 440                  | 18.8       | 3.1        |
| <a href="#">STK</a> | HOSE     | 27,550       | 39,050             | 09/08/2023  | 152                  | 24.2       | 1.9        |
| <a href="#">IDC</a> | HNX      | 48,500       | 48,527             | 03/08/2023  | 48,527               | 6.1        | 2.8        |
| <a href="#">PNJ</a> | HOSE     | 76,000       | 89,000             | 03/08/2023  | 1,729                | 12.2       | 3.0        |
| <a href="#">NT2</a> | HOSE     | 25,150       | 32,500             | 02/08/2023  | 671                  | 13.9       | 2.1        |
| <a href="#">STB</a> | HOSE     | 29,500       | 38,000             | 14/07/2023  | 7,259                | 9.9        | 1.6        |
| <a href="#">TCM</a> | HOSE     | 42,150       | 52,300             | 06/07/2023  | 211                  | 20.4       | 2.1        |
| <a href="#">PLX</a> | HOSE     | 33,350       | 45,100             | 05/07/2023  | 3,513                | 18.3       | 2.5        |
| <a href="#">ACB</a> | HOSE     | 22,400       | 25,400             | 30/06/2023  | 14,955               | 6.6        | 1.3        |
| <a href="#">VCB</a> | HOSE     | 86,000       | 131,270            | 13/06/2023  | 36,911               | 16.8       | 3.6        |
| <a href="#">BID</a> | HOSE     | 42,200       | 57,956             | 13/06/2023  | 23,019               | 12.7       | 2.3        |
| <a href="#">CTG</a> | HOSE     | 29,400       | 39,700             | 13/06/2023  | 19,121               | 10.0       | 1.5        |
| <a href="#">MBB</a> | HOSE     | 18,000       | 27,200             | 13/06/2023  | 21,242               | 5.8        | 1.2        |
| <a href="#">HDB</a> | HOSE     | 18,850       | 23,170             | 13/06/2023  | 10,216               | 6.2        | 1.3        |
| <a href="#">TPB</a> | HOSE     | 17,000       | 24,000             | 13/06/2023  | 6,732                | 5.7        | 1.0        |
| <a href="#">OCB</a> | HOSE     | 13,750       | 22,700             | 13/06/2023  | 4,354                | 7.2        | 1.1        |
| <a href="#">VIB</a> | HOSE     | 19,000       | 29,300             | 13/06/2023  | 9,378                | 6.6        | 1.5        |
| <a href="#">LPB</a> | HOSE     | 15,300       | 18,800             | 13/06/2023  | 4,925                | 6.6        | 1.1        |
| <a href="#">MSB</a> | HOSE     | 13,150       | 21,900             | 13/06/2023  | 4,803                | 9.1        | 1.4        |
| <a href="#">SHB</a> | HOSE     | 11,150       | 15,600             | 13/06/2023  | 8,035                | 6.0        | 0.9        |
| <a href="#">DHG</a> | HOSE     | 104,300      | 111,600            | 13/06/2023  | 1,061                | 13.8       | 3.0        |
| <a href="#">IMP</a> | HOSE     | 57,600       | 68,000             | 13/06/2023  | 286                  | 15.9       | 2.2        |
| <a href="#">GEG</a> | HOSE     | 13,250       | 18,800             | 13/06/2023  | 208                  | 46.5       | 1.7        |
| <a href="#">QTP</a> | UPCOM    | 14,441       | 23,900             | 13/06/2023  | 1,300                | 8.3        | 1.6        |
| <a href="#">PVS</a> | HNX      | 36,500       | 30,700             | 13/06/2023  | 1,059                | 16.8       | 1.2        |
| <a href="#">MPC</a> | UPCOM    | 16,959       | 19,200             | 13/06/2023  | 597                  | 12.9       | 1.3        |

|                     |      |         |         |            |        |       |     |
|---------------------|------|---------|---------|------------|--------|-------|-----|
| <a href="#">VHM</a> | HOSE | 42,300  | 83,100  | 13/06/2023 | 29,034 | 12.5  | 2.3 |
| <a href="#">KBC</a> | HOSE | 30,600  | 32,000  | 13/06/2023 | 2,073  | 11.9  | 1.3 |
| <a href="#">FRT</a> | HOSE | 103,300 | 85,000  | 13/06/2023 | 107    | 111.1 | 6.6 |
| <a href="#">HPG</a> | HOSE | 26,500  | 35,400  | 13/06/2023 | 7,698  | 16.6  | 1.2 |
| <a href="#">SBT</a> | HOSE | 14,300  | 16,700  | 13/06/2023 | 827    | 15.7  | 1.1 |
| <a href="#">PVI</a> | HNX  | 44,900  | 47,002  | 19/12/2022 | 996    | 13.8  | 1.3 |
| <a href="#">BMI</a> | HOSE | 21,850  | 25,190  | 19/12/2022 | 427    | 9.0   | 1.0 |
| <a href="#">BVH</a> | HOSE | 40,600  | 70,900  | 19/12/2022 | 2,967  | 17.7  | 2.3 |
| <a href="#">VHC</a> | HOSE | 69,100  | 69,000  | 19/12/2022 | 1,510  | 8.4   | 1.5 |
| <a href="#">SZC</a> | HOSE | 37,600  | 42,700  | 19/12/2022 | 585    | 7.5   | 2.6 |
| <a href="#">GVR</a> | HOSE | 19,350  | 29,755  | 19/12/2022 | 5,521  | 27.8  | 2.1 |
| <a href="#">LHG</a> | HOSE | 29,600  | 42,250  | 19/12/2022 | 653    | 3.5   | 1.2 |
| <a href="#">PVT</a> | HOSE | 24,600  | 26,900  | 19/12/2022 | 831    | 14.1  | 1.2 |
| <a href="#">TRA</a> | HOSE | 80,500  | 117,400 | 19/12/2022 | 349    | 13.9  | 2.8 |

Source: PHS

\*Reasonable price hasn't been adjusted with operated rights after reporting date

### **Analyst Certification**

The report is made by Pham Quang Chuong, analyst – Phu Hung Securities Joint Stock Company. Each research analyst(s), strategist(s) or research associate(s) responsible for the preparation and content of all or any identified portion of this research report hereby certifies that, with respect to each issuer or security or any identified portion of the report with respect to each issuer or security that the research analyst, strategist or research associate covers in this research report, all of the views expressed by that research analyst, strategist or research associate in this research report accurately reflect their personal views about those issuer(s) or securities. Each research analyst(s), strategist(s) or research associate(s) also certify that no part of their compensation was, is, or will be, directly or indirectly, related to the specific recommendation(s) or view(s) expressed by that research analyst, strategist or research associate in this research report.

### **Ratings Definition**

Buy = higher than domestic market by over 10%  
Hold = similar to domestic market at the rate of +10% ~ -10%  
Sell = lower than domestic market by below 10%  
No rating = the code is not rated in Phu Hung or not yet listed  
The performance is determined by total recollection in 12 months (including dividend).

### **Analyst Certification**

This information has been compiled from sources we believe to be reliable, but we do not hold ourselves responsible for its completeness or accuracy. It is not an offer to sell or solicitation of an offer to buy any securities. Phu Hung Securities and its affiliates and their officers and employees may or may not have a position in or with respect to the securities mentioned herein. Phu Hung Securities (or one of its affiliates) may from time to time perform investment banking or other services or solicit investment banking or other business for any company mentioned in this report. All opinions and estimates included in this report constitute our judgment as of this date and are subject to change without notice.

#### **© Phu Hung Securities Corporation**

F21, Phu My Hung Tower, 08 Hoang Van Thai, Tan Phu Ward, District 7, HCMC  
Phone: (84-28) 5 413 5479 Fax: (84-28) 5 413 5472  
Customer Service: 1900 25 23 58 Call Center: (84-28) 5 413 5488  
E-mail: [info@phs.vn](mailto:info@phs.vn) / [support@phs.vn](mailto:support@phs.vn) Web: [www.phs.vn](http://www.phs.vn)

#### **Phu My Hung Trading office**

Ground Floor, CR2-08, 107 Ton  
Dat Tien, Tan Phu Ward, District 7,  
Ho Chi Minh City  
Tel: (84-28) 5 413 5478  
Fax: (84-28) 5 413 5473

#### **District 3 Branch**

4th & 5th Floor, 458 Nguyen  
Thi Minh Khai, Ward 2,  
District 3, Ho Chi Minh City  
Tel: (84-28) 3 820 8068  
Fax: (84-28) 3 820 8206

#### **Thanh Xuan Branch**

5th Floor, UDIC Complex Building, N04  
Hoang Dao Thuy, Trung Hoa Ward, Cau  
Giay District, Ha Noi  
Tel: (84-24) 6 250 9999  
Fax: (84-24) 6 250 6666

#### **Tan Binh Branch**

Park Legend Building, 251 Hoang  
Van Thu Street, Ward 2, Tan Binh  
District, Ho Chi Minh City  
Tel: (84-28) 3 813 2401  
Fax: (84-28) 3 813 2415

#### **Hanoi Branch**

5th Floor, Vinafor Building,  
No.127 Lo Duc, Dong Mac  
Ward, Hai Ba Trung District,  
Ha Noi  
Tel: (84-24) 3 933 4566  
Fax: (84-24) 3 933 4820

#### **Hai Phong Branch**

2nd Floor, Building No.18 Tran Hung  
Dao, Hoang Van Thu Ward, Hong Bang  
District, Hai Phong  
Tel: (84-225) 384 1810  
Fax: (84-225) 384 1801

#### **District 1 Branch**

Room 1003A, 10th Floor, No. 81-  
83-83B-85 Ham Nghi Street,  
Nguyen Thai Binh Ward, District 1,  
Ho Chi Minh City  
Tel: ((84-28) 3 535 6060  
Fax: (84-28) 3 535 2912