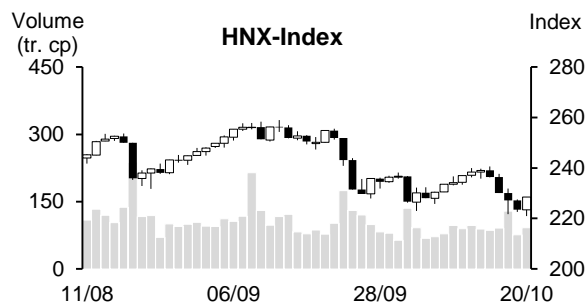
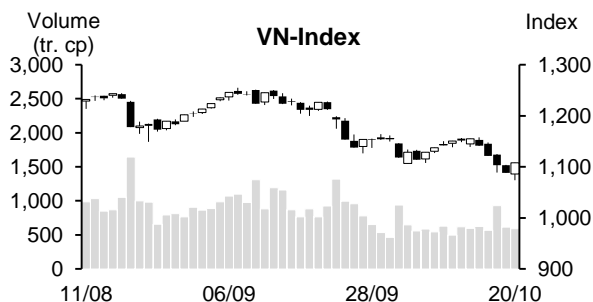


Day	Monday 16/10	Tuesday 17/10	Wednesday 18/10	Thursday 19/10	Friday 20/10	Average
VN-Index	1,141.42	1,121.65	1,103.40	1,087.85	1,108.03	1,112.47
Change +/-	-13.31	-19.77	-18.25	-15.55	20.18	-9.34
Change %	-1.15%	-1.73%	-1.63%	-1.41%	1.86%	-0.81%
Matched volume (mil. shares)	623.21	566.72	930.79	615.93	592.71	665.87
Matched value (bil. Dong)	14,206.26	12,547.66	19,673.99	12,698.24	12,396.78	14,304.59
Foreign net trade (bil. Dong)	-827.26	17.67	553.11	271.86	764.23	155.92
VN30	1,153.21	1,141.03	1,125.56	1,104.89	1,123.69	1,129.68
Change +/-	-13.45	-12.18	-15.47	-20.67	18.80	-8.59
Change %	-1.15%	-1.06%	-1.36%	-1.84%	1.70%	-0.74%
Matched volume (mil. shares)	173.31	141.81	233.78	167.05	155.02	174.20
Matched value (bil. Dong)	5,396.12	4,191.66	6,862.71	5,038.59	4,553.19	5,208.45
Foreign net trade (bil. Dong)	-489.84	-141.37	191.10	72.83	891.77	104.90
HNX-Index	236.46	230.03	227.11	223.45	228.45	229.10
Change +/-	-2.59	-6.43	-2.92	-3.66	5.00	-2.12
Change %	-1.08%	-2.72%	-1.27%	-1.61%	2.24%	-0.89%
Matched volume (mil. shares)	85.97	90.94	128.68	76.37	92.06	94.81
Matched value (bil. Dong)	1,932.50	1,944.89	2,568.13	1,445.71	1,773.46	1,932.94
Foreign net trade (bil. Dong)	-39.55	90.95	14.40	16.99	34.18	23.39



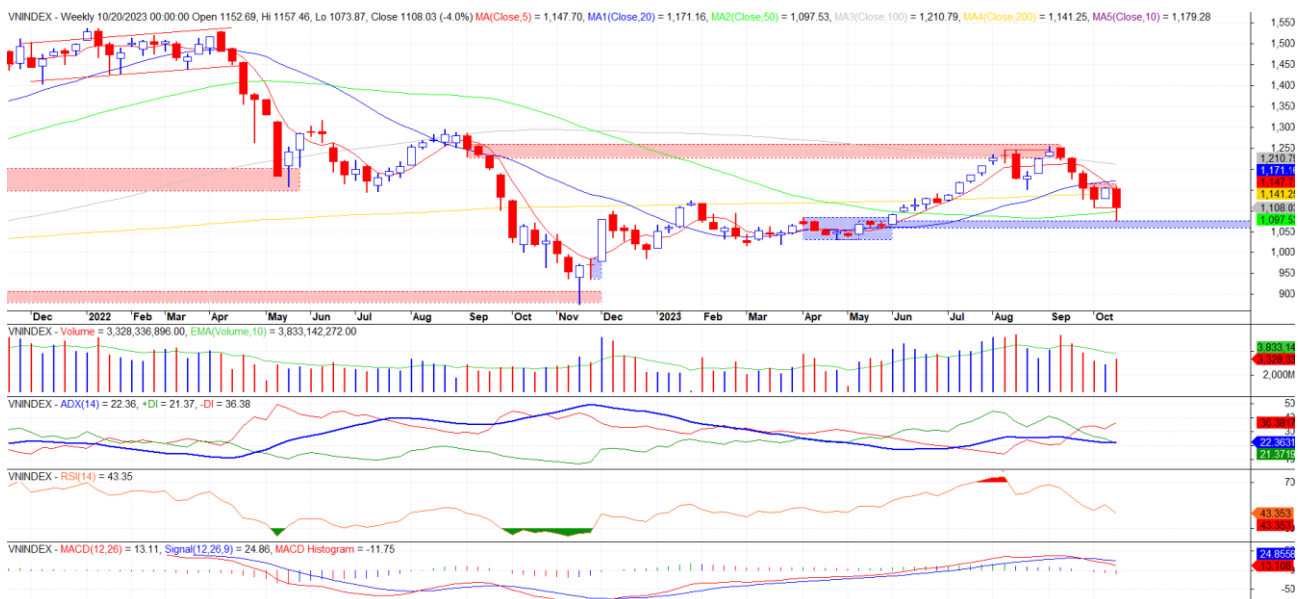
### REMARKABLE POINTS ON THE MARKET

After previous light recovering week, Vietnam stock market dropped again with the strongest drop in the last 2 months. Red covered the market in first 4 sessions and in all trading time on Friday as global stock status was also very gloomy. Positive point only came at the end of Friday as bottom-catching demand was suddenly triggered at support level so the indexes lowered the drop. The liquidity tended to improve after 4 weeks of dropping, showing that the cash flow joined in again. Besides, foreign trade was also remarkable as they started buying again with highest net buying value of 7 weeks.

### TECHNICAL POINT OF VIEW

VN-Index suddenly saw a negative dropping week again, creating base-withdraw candle on week chart but hasn't been convincing as candle shadow is still shorter than the body. On daily chart, the index broke old bottom of 1,106 and lost MA200. The drop quickly pulled the index to next support level of 1,060-1,075 and reacted positively on Friday. The sign created Bullish Engulfing candles but saw lack of trust as the volume was low on both candles, but it also showed positive react at support level. Accordingly, we think that it might only be 1-2+ recoveries before dropping again to test bottom and confirm short-term bottom, so it is not impossible that there will be a shake-off since there is still a lower support of 1,030-1,050. Close resistant needs to be paid with attention if the index recovers further to 1,115-1,120 and 1,140-1,155.

### VN-Index



HNX-Index also saw a strong dropping week again and there was base-withdraw candle at week MA50. On daily chart, the index also broke old bottom but still stayed above MA200 with Bullish Engulfing at this level, might recover, but cannot move far forward since there were close resistant levels above like 232 and 235-240. If the bottom around 221 is broken, it might drop further to support level of 205-215.

### HNX-Index



In general, both indexes suddenly saw a negative week again, the recovery at the end of the week was quite good but the sign wasn't enough to confirm bottom so it might drop further this week. General strategy is using the recovery to lower the weight if the weight is high, or if the cash weight is high and investors can take risks, can consider catching bottom with low weight on over selling droppers toward support of the codes resisting dropping trend in recent drops.

**MARKET STATISTICS****TOP 5 IN MATCHING VOLUME**

HOSE			
Ticker	Closing (VND)	Change %	Volume (share)
VIX	15,000	-4.46%	141,700,356
SSI	31,300	-6.71%	133,488,986
VND	19,950	-9.32%	126,513,567
VPB	21,600	-1.59%	114,102,078
HPG	24,350	-5.44%	99,061,148

HNX			
Ticker	Closing (VND)	Change %	Volume (share)
SHS	16,700	-8.24%	135,389,865
CEO	20,000	-4.31%	45,506,584
PVS	38,900	-2.51%	45,257,956
HUT	21,600	-8.09%	29,886,895
MBS	20,700	-9.61%	28,817,725

**TOP 5 IN MATCHING VALUE**

HOSE			
Ticker	Closing (VND)	Change %	Value (bil. VND)
SSI	31,300	-6.71%	4,181.3
STB	30,100	-4.44%	2,907.1
VPB	21,600	-1.59%	2,550.9
VND	19,950	-9.32%	2,550.8
HPG	24,350	-5.44%	2,413.1

HNX			
Ticker	Closing (VND)	Change %	Value (bil. VND)
SHS	16,700	-8.24%	2,258.2
PVS	38,900	-2.51%	1,761.1
IDC	49,600	-5.52%	1,336.4
CEO	20,000	-4.31%	877.9
HUT	21,600	-8.09%	664.3

**STATISTICS ON THE IMPACT ON THE INDEX****TOP 5 GAINING IMPACT**

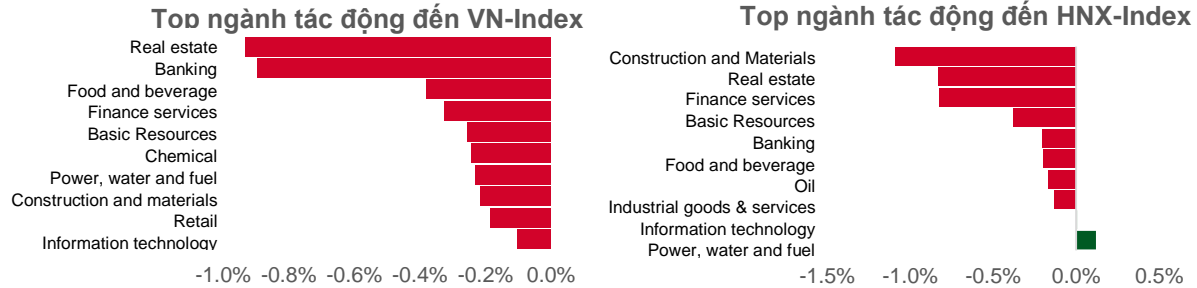
HOSE			
Ticker	Closing (VND)	Change %	Impact %
LPB	14,550	2.46%	0.02%
VJC	105,200	1.35%	0.02%
CTG	29,400	0.34%	0.01%
EIB	17,700	1.43%	0.01%
HDB	17,750	0.85%	0.01%

HNX			
Ticker	Closing (VND)	Change %	Impact %
DTK	11,900	9.17%	0.22%
PTI	33,700	8.71%	0.07%
NET	61,400	5.86%	0.02%
VIF	18,000	1.12%	0.02%
GKM	33,800	4.97%	0.02%

**TOP 5 DROPPING IMPACT**

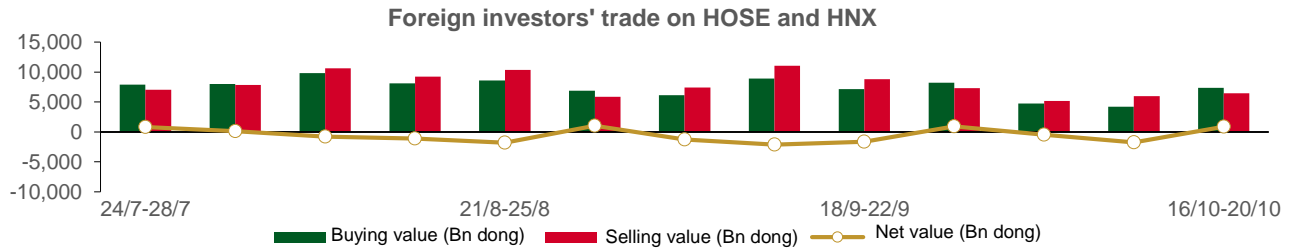
HOSE			
Ticker	Closing (VND)	Change %	Impact %
VIC	43,350	-5.97%	-0.23%
VHM	44,500	-5.12%	-0.23%
BID	40,500	-4.71%	-0.22%
VCB	84,800	-2.08%	-0.22%
HPG	24,350	-5.44%	-0.18%

HNX			
Ticker	Closing (VND)	Change %	Impact %
HUT	21,600	-8.09%	-0.53%
SHS	16,700	-8.24%	-0.38%
MBS	20,700	-9.61%	-0.30%
IDC	49,600	-5.52%	-0.30%
KSV	33,800	-11.29%	-0.27%



**STATISTICS ON FOREIGN INVESTORS' TRADE**

Exchange	Buying vol. (mil. share)	Buying value (bil. VND)	Selling vol. (mil. share)	Selling value (bil. VND)	Net selling/ buying value (mil. share)	Net selling/ buying value (bil. VND)
HOSE	230.38	7,139.97	225.36	6,360.35	5.02	779.61
HNX	6.81	234.50	5.18	117.52	1.64	116.97
<b>Total</b>	<b>237.20</b>	<b>7,374.47</b>	<b>230.54</b>	<b>6,477.87</b>	<b>6.66</b>	<b>896.58</b>



**TOP 5 BOUGHT-IN**

HOSE			
Ticker	Closing (VND)	Buying vol. (share)	Buying value (bil. VND)
VHM	44,500	12,973,273	536.22
STB	30,100	16,491,071	494.79
PVD	28,300	3,757,079	103.91
VHC	74,800	1,075,800	78.42
FRT	94,700	834,930	78.23

HNX			
Ticker	Closing (VND)	Buying vol. (share)	Buying value (bil. VND)
IDC	49,600	2,115,680	107.06
PVS	38,900	1,122,100	42.72
CEO	20,000	408,034	8.14
NRC	5,100	414,200	2.26
BVS	25,000	83,000	2.06

**TOP 5 SOLD-OUT**

HOSE			
Ticker	Closing (VND)	Buying vol. (share)	Buying value (bil. VND)
MWG	44,700	(3,922,104)	(193.98)
EIB	17,700	(9,446,702)	(168.63)
VPB	21,600	(7,377,011)	(165.34)
E1VFN30	19,410	(8,680,000)	(164.75)
FUEVFVND	25,400	(4,244,650)	(111.49)

HNX			
Ticker	Closing (VND)	Buying vol. (share)	Buying value (bil. VND)
SHS	16,700	(2,210,998)	(39.07)
MBS	20,700	(242,700)	(5.30)
EID	20,800	(114,800)	(2.35)
NVB	11,300	(200,000)	(2.32)
PVC	17,700	(79,300)	(1.40)

### **Analyst Certification**

The report is made by Pham Quang Chuong, analyst – Phu Hung Securities Joint Stock Company. Each research analyst(s), strategist(s) or research associate(s) responsible for the preparation and content of all or any identified portion of this research report hereby certifies that, with respect to each issuer or security or any identified portion of the report with respect to each issuer or security that the research analyst, strategist or research associate covers in this research report, all of the views expressed by that research analyst, strategist or research associate in this research report accurately reflect their personal views about those issuer(s) or securities. Each research analyst(s), strategist(s) or research associate(s) also certify that no part of their compensation was, is, or will be, directly or indirectly, related to the specific recommendation(s) or view(s) expressed by that research analyst, strategist or research associate in this research report.

### **Ratings Definition**

Buy = higher than domestic market by over 10%  
Hold = similar to domestic market at the rate of +10% ~ -10%  
Sell = lower than domestic market by below 10%  
No rating = the code is not rated in Phu Hung or not yet listed  
The performance is determined by total recollection in 12 months (including dividend).

### **Analyst Certification**

This information has been compiled from sources we believe to be reliable, but we do not hold ourselves responsible for its completeness or accuracy. It is not an offer to sell or solicitation of an offer to buy any securities. Phu Hung Securities and its affiliates and their officers and employees may or may not have a position in or with respect to the securities mentioned herein. Phu Hung Securities (or one of its affiliates) may from time to time perform investment banking or other services or solicit investment banking or other business for any company mentioned in this report. All opinions and estimates included in this report constitute our judgment as of this date and are subject to change without notice.

#### **© Phu Hung Securities Corporation**

F21, Phu My Hung Tower, 08 Hoang Van Thai, Tan Phu Ward, District 7, HCMC  
Phone: (84-28) 5 413 5479 Fax: (84-28) 5 413 5472  
Customer Service: (84-28) 5 411 8855 Call Center: (84-28) 5 413 5488  
E-mail: [info@phs.vn](mailto:info@phs.vn) / [support@phs.vn](mailto:support@phs.vn) Web: [www.phs.vn](http://www.phs.vn)

#### **Phu My Hung Trading office**

CR2-08 building, 107 Ton Dat  
Tien, Tan Phu Ward, District 7,  
HCMC  
Tel: (84-28) 5 413 5478  
Fax: (84-28) 5 413 5473

#### **District 3 Branch**

F4-5, D&D Tower,  
458 Nguyen Thi Minh Khai,  
Ward 2, District 3, HCMC  
Tel: (84-28) 3 820 8068  
Fax: (84-28) 3 820 8206

#### **Thanh Xuan Branch**

F5, UDIC Complex, N04 Hoang Dao  
Thuy, Trung Hoa Ward, Cau Giay  
District, Hanoi  
Tel: (84-24) 6 250 9999  
Fax: (84-24) 6 250 6666

#### **Tan Binh Branch**

Park Legend Building  
251 Hoang Van Thu, Ward 2, Tan  
Binh District, HCMC  
Tel: (84-28) 3 813 2401  
Fax: (84-28) 3 813 2415

#### **Hanoi Branch**

F5, Vinafor Tower, 127 Lo  
Duc, Hai Ba Trung District,  
Hanoi  
Tel: (84-24) 3 933 4566  
Fax: (84-24) 3 933 4820

#### **Hai Phong Branch**

F2, Eliteco Building, Tran Hung Dao,  
Hong Bang District, Hai Phong  
Tel: (84-225) 384 1810  
Fax: (84-225) 384 1801

#### **District 1 Branch**

No 1003A, F10, Ruby Tower, 81-  
83-83B-85 Ham Nghi, Nguyen  
Thai Binh Ward, District 1, HCMC  
Tel: ((84-28) 3 535 6060  
Fax: (84-28) 3 535 2912