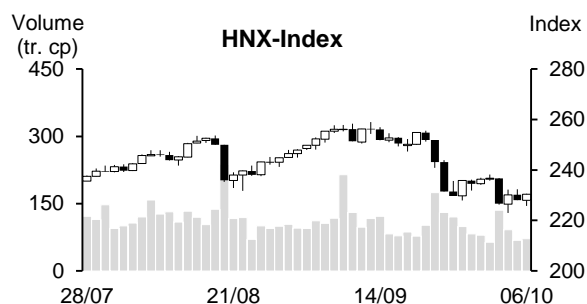
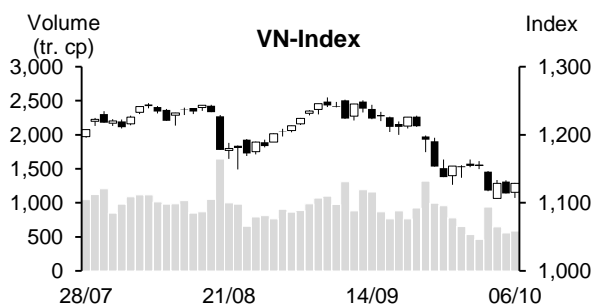


Day	Monday 02/10	Tuesday 03/10	Wednesday 04/10	Thursday 05/10	Friday 06/10	Average
VN-Index	1,155.25	1,118.10	1,128.67	1,113.89	1,128.54	1,128.89
Change +/-	1.10	-37.15	10.57	-14.78	14.65	-5.12
Change %	0.10%	-3.22%	0.95%	-1.31%	1.32%	-0.43%
Matched volume (mil. shares)	465.72	940.43	646.29	556.70	586.25	639.08
Matched value (bil. Dong)	10,055.67	19,766.80	14,002.71	11,648.33	11,986.14	13,491.93
Foreign net trade (bil. Dong)	176.38	-158.29	188.47	-731.56	135.28	-77.94
VN30	1,167.13	1,130.89	1,138.54	1,124.48	1,139.78	1,140.16
Change +/-	0.87	-36.24	7.65	-14.06	15.30	-5.30
Change %	0.07%	-3.11%	0.68%	-1.23%	1.36%	-0.45%
Matched volume (mil. shares)	119.93	260.37	159.17	131.41	137.63	161.70
Matched value (bil. Dong)	3,641.31	7,373.74	4,639.71	3,826.19	4,037.80	4,703.75
Foreign net trade (bil. Dong)	61.34	-149.00	-4.83	-363.01	50.44	-81.01
HNX-Index	236.72	226.68	230.20	228.01	230.45	230.41
Change +/-	0.37	-10.04	3.52	-2.19	2.44	-1.18
Change %	0.16%	-4.24%	1.55%	-0.95%	1.07%	-0.48%
Matched volume (mil. shares)	63.91	134.98	92.05	67.89	71.60	86.09
Matched value (bil. Dong)	1,285.81	2,550.85	1,737.58	1,366.56	1,326.03	1,653.37
Foreign net trade (bil. Dong)	-4.37	13.49	0.11	-17.79	-70.64	-15.84



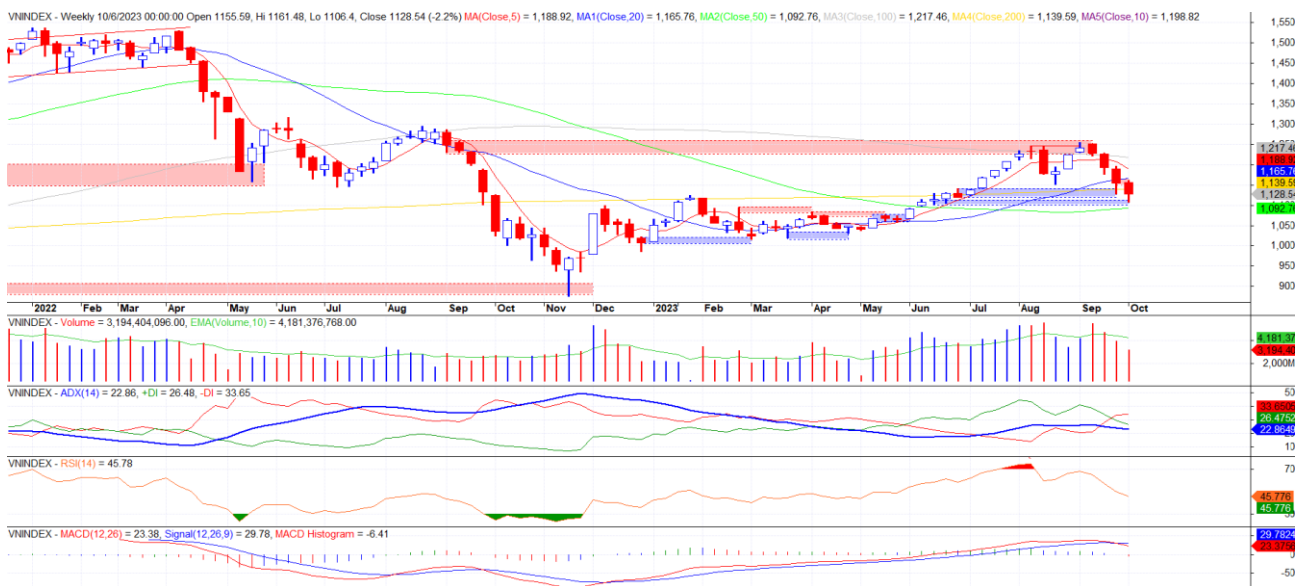
REMARKABLE POINTS ON THE MARKET

The market saw an eventful week with gains and drops. Correcting trend is still the main trend with lower and lower liquidity. However, the impressive gain on Friday with green spreading widely, showing sign of bottom-catching cash flow. Most large-cap groups closed the week in red with main dropping reason coming from banking, oil, and steel. On the contrary, different from previous dropping weeks, there were some midcap and penny groups that could attract the cash flow and gained again last week like industrial park, fertilizer, and sea products.

TECHNICAL POINT OF VIEW

VN-Index saw the 4th dropping week in a row and saw base-withdraw candle when closing in on week MA50. On daily chart, there was sign of exhausted gap (as for the drop from peak of 1,250). At the same time, three struggling sessions at the end of the week created Inside Bar set with weakening supply pressure, showing possibility of creating bottom around support of day MA200. This will be confirmed if surpassing 1,134 points. Then, there might be at least a recovery to close resistant of 1,150-1,160. If there is an explosive session following the trend this week, middle-term bottom will be confirmed, then, it might gain to further resistant level of 1,210-1,230.

VN-Index



HNX-Index also saw similar sign with the 4th dropping week in a row and a base-withdraw candle. On daily chart, the index will also see a strong drop to break previous week bottom and recovered in following 3 sessions to close above old bottom of 228. This sign showed that this might only be a bottom-shaking drop and there might soon be sign of bottom-confirming in this week. Close resistant level of 235-238. At the moment, the index might form Two-bottom model, if the recovery can break peak level of 238, the model will be completely confirmed. Then, there will be chance of middle-term gaining wave toward resistant level of 251-156.

HNX-Index



In general, both indexes saw positive recovering sign at the end of the week, showing that this might only be a shake-off of previous bottom to start gaining again. We think that the market risk has dropped, so general strategy might be buying at average weight and increase when there is a trend-explosive session, with priority on strong groups like Industrial Park, Sea products, Textile, Seaport, Sea transport, Power, Fertilizer, or individual codes with strong chart and attractive stories.

MARKET STATISTICS**TOP 5 IN MATCHING VOLUME**

HOSE			
Ticker	Closing (VND)	Change %	Volume (share)
VIX	15,150	-3.81%	173,629,216
SSI	32,950	3.62%	141,811,776
VND	20,900	-0.48%	139,211,475
HPG	24,950	-5.13%	98,869,412
DIG	22,300	-11.16%	95,888,562

HNX			
Ticker	Closing (VND)	Change %	Volume (share)
SHS	17,300	0.58%	133,363,124
CEO	18,500	-13.15%	45,186,528
PVS	36,800	-4.66%	37,592,983
MBS	22,000	-3.51%	26,631,150
HUT	23,000	-6.12%	23,737,136

TOP 5 IN MATCHING VALUE

HOSE			
Ticker	Closing (VND)	Change %	Value (bil. VND)
SSI	32,950	3.62%	4,470.1
VND	20,900	-0.48%	2,810.2
STB	30,950	0.98%	2,641.9
VIX	15,150	-3.81%	2,620.2
HPG	24,950	-5.13%	2,492.8

HNX			
Ticker	Closing (VND)	Change %	Value (bil. VND)
SHS	17,300	0.58%	2,223.7
PVS	36,800	-4.66%	1,390.9
CEO	18,500	-13.15%	889.7
IDC	47,000	1.51%	613.0
MBS	22,000	-3.51%	568.8

STATISTICS ON THE IMPACT ON THE INDEX**TOP 5 GAINING IMPACT**

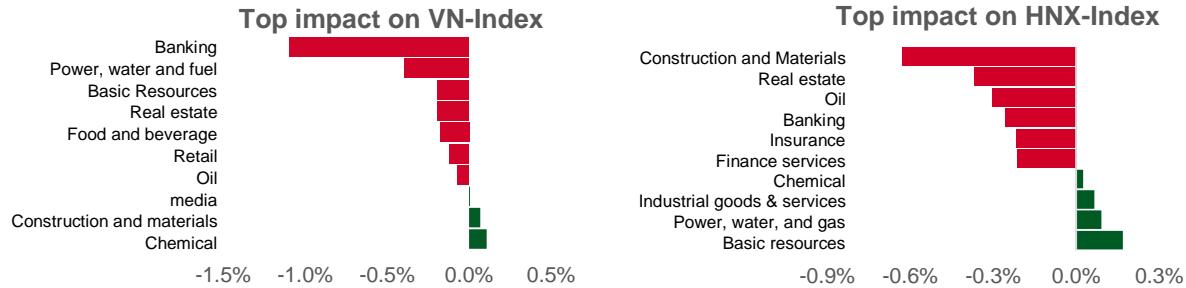
HOSE			
Ticker	Closing (VND)	Change %	Impact %
VRE	27,450	5.17%	0.07%
GVR	20,200	3.59%	0.06%
VHM	46,050	1.21%	0.05%
VGC	51,000	9.91%	0.04%
SSI	32,950	3.62%	0.04%

HNX			
Ticker	Closing (VND)	Change %	Impact %
KSV	42,600	11.37%	0.28%
IDC	47,000	1.51%	0.07%
DXP	14,400	22.79%	0.05%
DTD	28,000	13.36%	0.04%
DTK	10,800	1.89%	0.04%

TOP 5 DROPPING IMPACT

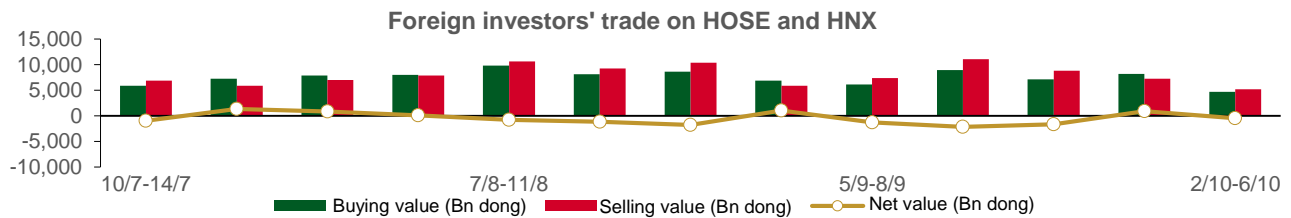
HOSE			
Ticker	Closing (VND)	Change %	Impact %
GAS	84,200	-7.17%	-0.32%
VCB	85,400	-2.40%	-0.25%
BID	42,200	-4.85%	-0.24%
HPG	24,950	-5.13%	-0.17%
CTG	28,700	-4.49%	-0.14%

HNX			
Ticker	Closing (VND)	Change %	Impact %
CEO	18,500	-13.15%	-0.46%
HUT	23,000	-6.12%	-0.42%
PVS	36,800	-4.66%	-0.27%
NVB	11,800	-9.92%	-0.23%
PVI	44,700	-4.49%	-0.16%



STATISTICS ON FOREIGN INVESTORS' TRADE

Exchange	Buying vol. (mil. share)	Buying value (bil. VND)	Selling vol. (mil. share)	Selling value (bil. VND)	Net selling/ buying value (mil. share)	Net selling/ buying value (bil. VND)
HOSE	170.25	4,646.67	177.91	5,036.38	(7.66)	(389.72)
HNX	3.86	89.80	13.39	169.01	(9.53)	(79.20)
Total	174.10	4,736.47	191.29	5,205.39	(17.19)	(468.92)



TOP 5 BOUGHT-IN

HOSE			
Ticker	Closing (VND)	Buying vol. (share)	Buying value (bil. VND)
VIX	15,150	3,247,230	47.11
VNM	74,200	635,500	46.88
STB	30,950	1,212,900	36.53
HPG	24,950	1,220,374	30.40
SSI	32,950	748,405	23.90

HNX			
Ticker	Closing (VND)	Buying vol. (share)	Buying value (bil. VND)
IDC	47,000	246,100	11.48
SLS	207,900	3,500	0.72
PVG	9,800	72,100	0.72
LAS	13,300	48,000	0.63
CEO	18,500	10,386	0.19

TOP 5 SOLD-OUT

HOSE			
Ticker	Closing (VND)	Buying vol. (share)	Buying value (bil. VND)
MSN	72,700	(1,491,080)	(106.96)
DPM	38,050	(639,700)	(24.44)
KDH	29,500	(620,900)	(17.05)
PLX	35,000	(409,000)	(14.24)
NLG	32,200	(445,480)	(14.24)

HNX			
Ticker	Closing (VND)	Buying vol. (share)	Buying value (bil. VND)
PSI	9,800	(8,916,300)	(77.57)
PVS	36,800	(76,400)	(2.83)
DTD	28,000	(71,100)	(2.00)
NVB	11,800	(50,000)	(0.59)
TVC	5,600	(69,500)	(0.40)

Analyst Certification

The report is made by Pham Quang Chuong, analyst – Phu Hung Securities Joint Stock Company. Each research analyst(s), strategist(s) or research associate(s) responsible for the preparation and content of all or any identified portion of this research report hereby certifies that, with respect to each issuer or security or any identified portion of the report with respect to each issuer or security that the research analyst, strategist or research associate covers in this research report, all of the views expressed by that research analyst, strategist or research associate in this research report accurately reflect their personal views about those issuer(s) or securities. Each research analyst(s), strategist(s) or research associate(s) also certify that no part of their compensation was, is, or will be, directly or indirectly, related to the specific recommendation(s) or view(s) expressed by that research analyst, strategist or research associate in this research report.

Ratings Definition

Buy = higher than domestic market by over 10%

Hold = similar to domestic market at the rate of +10% ~ -10%

Sell = lower than domestic market by below 10%

No rating = the code is not rated in Phu Hung or not yet listed

The performance is determined by total recollection in 12 months (including dividend).

Analyst Certification

This information has been compiled from sources we believe to be reliable, but we do not hold ourselves responsible for its completeness or accuracy. It is not an offer to sell or solicitation of an offer to buy any securities. Phu Hung Securities and its affiliates and their officers and employees may or may not have a position in or with respect to the securities mentioned herein. Phu Hung Securities (or one of its affiliates) may from time to time perform investment banking or other services or solicit investment banking or other business for any company mentioned in this report. All opinions and estimates included in this report constitute our judgment as of this date and are subject to change without notice.

© Phu Hung Securities Corporation

F21, Phu My Hung Tower, 08 Hoang Van Thai, Tan Phu Ward, District 7, HCMC

Phone: (84-28) 5 413 5479

Fax: (84-28) 5 413 5472

Customer Service: (84-28) 5 411 8855

Call Center: (84-28) 5 413 5488

E-mail: info@phs.vn / support@phs.vn

Web: www.phs.vn

Phu My Hung Trading office

CR2-08 building, 107 Ton Dat Tien, Tan Phu Ward, District 7, HCMC

Tel: (84-28) 5 413 5478

Fax: (84-28) 5 413 5473

District 3 Branch

F4-5, D&D Tower, 458 Nguyen Thi Minh Khai, Ward 2, District 3, HCMC

Tel: (84-28) 3 820 8068

Fax: (84-28) 3 820 8206

Thanh Xuan Branch

F5, UDIC Complex, N04 Hoang Dao Thuy, Trung Hoa Ward, Cau Giay District, Hanoi

Tel: (84-24) 6 250 9999

Fax: (84-24) 6 250 6666

Tan Binh Branch

Park Legend Building 251 Hoang Van Thu, Ward 2, Tan Binh District, HCMC

Tel: (84-28) 3 813 2401

Fax: (84-28) 3 813 2415

Hanoi Branch

F5, Vinafor Tower, 127 Lo Duc, Hai Ba Trung District, Hanoi

Tel: (84-24) 3 933 4566

Fax: (84-24) 3 933 4820

Hai Phong Branch

F2, Eliteco Building, Tran Hung Dao, Hong Bang District, Hai Phong

Tel: (84-225) 384 1810

Fax: (84-225) 384 1801

District 1 Branch

No 1003A, F10, Ruby Tower, 81-83-83B-85 Ham Nghi, Nguyen Thai Binh Ward, District 1, HCMC

Tel: ((84-28) 3 535 6060

Fax: (84-28) 3 535 2912