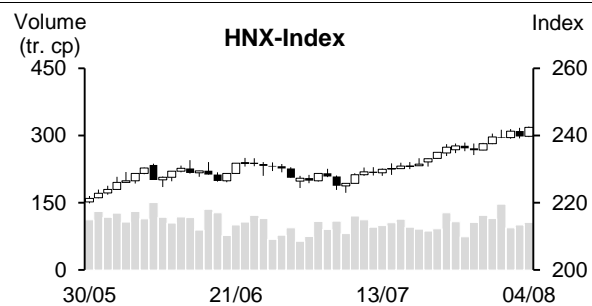
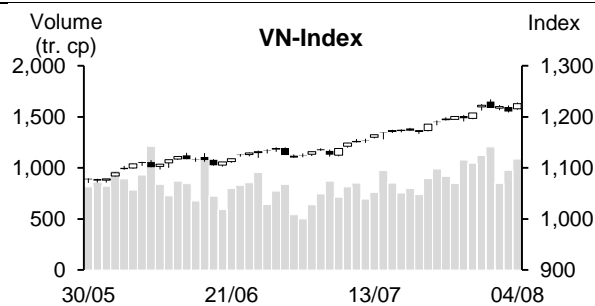


| 04/08/2023 | HOSE | | VN30 | | HNX | |
|-------------------------------------|-----------------|---------------|---------------|---------------|---------------|--------------|
| | Value | Change % | Value | Change % | Value | Change % |
| Closing rate | 1,225.98 | 1.24% | 1,231.42 | 1.70% | 242.41 | 1.10% |
| Total volume (mil. shares) | 1,126.86 | 9.10% | 336.39 | 17.37% | 108.10 | 6.70% |
| Matched volume (mil. shares) | 1,087.22 | 11.03% | 321.10 | 21.33% | 106.39 | 6.10% |
| 20-session average (mil. shares) | 913.38 | 19.03% | 250.52 | 28.17% | 105.66 | 0.69% |
| Total value (bil dong) | 23,102 | 6.83% | 9,823 | 22.91% | 1,832 | 2.25% |
| Matched value (bil dong) | 22,085 | 7.91% | 9,323 | 24.08% | 1,809 | 3.74% |
| 20-session average (bil dong) | 18,311 | 20.61% | 6,882 | 35.49% | 1,713 | 5.58% |
| | Weight % | | Weight % | | Weight % | |
| Number of gainers | 343 | 65% | 22 | 73% | 120 | 48% |
| Number of droppers | 127 | 24% | 7 | 23% | 79 | 31% |
| Stand still codes | 54 | 10% | 1 | 3% | 52 | 21% |



REMARKABLE POINTS ON THE MARKET

Vietnam stock market was explosive on Friday with main indexes gaining positively in both points and liquidity. From the beginning, the market was excited with strong pushing sign from real estate with information related to rescuing real estate projects. However, other than this group, the morning wasn't remarkable. Only in the afternoon, the demand started spreading more positively with many other positive gaining groups like banking, construction, oil, securities, and steel. ATC was even more excited as it was time for ETFs' review. However, the orders were still balance so the index didn't drop much comparing to the gain during the session.

TECHNICAL POINT OF VIEW

In technical term, VN-Index gained strongly again. The volume increased to above 10 and 20-session average, showing that the cash flow is still quite strong. Not just that, the index closed above MA5 again with a thick gaining candle, and MA5, 10, and 20 still differentiated positively, showing that recovering trend is still there. Moreover, MACD stayed above Signal, maintaining buying sign and +DI was above -DI, showing that gaining trend is still there, and the index might move to challenge sentimental target around 1,300 points. For HNX, HNX-Index saw similar situation. It gained again and stayed above MA5, and MA5 still differentiated positively from MA20, showing that recovering trend is still there and the index might move to challenge sentimental level of 250 points. In general, the market is still on recovering trend after the gain on August 4. Therefore, investors might continue on surfing trades to use the market's positive trend, having priority on good-fundamental codes with positive business prospect that can attract the cash flow.

Recommending code: POW (Buy)

Observing code: VNM, NKG

(Details in page 2)

RECOMMENDING CODES AS PER TECHNICAL SIGNS

Codes of the day

| No | Ticker | Recommend | Recommended date | Current Price | Operation Price | Current profit/loss | Target Price | Expected profit | Cut loss price | Expected Loss | Note |
|----|--------|-----------|------------------|---------------|-----------------|---------------------|--------------|-----------------|----------------|---------------|---------------------|
| 1 | POW | Buy | 07/08/23 | 13.6 | 13.6 | 0.0% | 16.1 | 18.4% | 13.1 | -3.7% | Might recover again |

| No | Ticker | Recommend | Recommended date | Current Price | Resistance | Cut loss | Technical sign |
|----|--------|----------------|------------------|---------------|------------|----------|---|
| 1 | VNM | Observe to buy | 07/08/23 | 73 | 78-79 | 70.6 | Positive correction to support level of 71-72 with low vol. -> might only be technical correction, might consider buying at 71-72 |
| 2 | NKG | Observe to buy | 07/08/23 | 19.25 | 22-24 | 18.5 | Bullish Engulfing candles at support level of 18.3-18.7 -> might end the correction, return to gaining trend |

List of recommended codes

| No | Ticker | Recommend | Recommended date | Current Price | 04/11/22 | Current profit/loss | Target Price | Expected profit | Cut loss price | Expected Loss | Note |
|----|--------|-----------|------------------|---------------|----------|---------------------|--------------|-----------------|----------------|---------------|------|
| 1 | CTG | Buy | 30/05/23 | 31 | 28 | 10.7% | 31.1 | 11.1% | 27.2 | -2.9% | |
| 2 | SSI | Buy | 02/06/23 | 29.2 | 23.45 | 24.5% | 31.2 | 33% | 22.45 | -4% | |
| 3 | BID | Buy | 23/06/23 | 48.4 | 43.95 | 10.1% | 50 | 13.8% | 43 | -2% | |
| 4 | VEA | Buy | 21/07/23 | 40.56 | 37.8 | 7.3% | 41.1 | 8.7% | 36.6 | -3% | |
| 5 | OIL | Buy | 25/07/23 | 11.11 | 10.93 | 1.7% | 13.9 | 27.2% | 10.3 | -6% | |
| 6 | TDN | Buy | 27/07/23 | 11 | 11.3 | -2.7% | 13 | 15% | 10.8 | -4% | |

DAILY NEWS**Domestic news****Government bond mobilizing interest rate has been dropping in July**

In July, HNX held 21 Government Bond and Government guaranteed bond auctions, with total winning volume of 33,287 billion. In which, State Treasury mobilized 28,837 billion and Social Policy Bank mobilized 4,450 billion.

So, in 7 months, State Treasury mobilized 208,729 billion dong of Government Bond, reaching 52.18% year-target and Social Policy Bank mobilized 4,450 billion, reaching 18.27% target.

Remarkably, State Treasury Government Bond mobilizing interest rate at the end of July dropped by 5-20 basic-points from the end of June.

In detail, winning interest rate in the final session of July in 5, 10, 15, 20, and 30-year terms is 1.8%, 2.4%, 2.6%, 2.75%, and 3.1%. 15 and 10-year terms' winning rate is remarkably, reaching 50.92% and 39.35% total issuing volume.

Second biggest bid in Long Thanh project: revealing the only bidder satisfying technical requirements, with 2 companies on the exchange

On August 3, 2023, Vietnam Airport (ACV) announced bidder meeting technical requirement for the bid pack number 4.6 in Third Partial Project – essential constructions in the airport under Long Thanh International Airport project, phase 1.

This pack's total investment is over 8.1 trillion, the second biggest pack in third partial project in Long Thanh project, after the pack 5.10 at 35 trillion.

The only bidder meeting technical requirements is joint-venture Aviation construction Corporation ACC – Truong Son Construction – Vinaconex – Vietnam Construction Development and Investment – Cienco4 Group – Six-Four-Seven aviation construction.

In which, 2 listed companies are Vinaconex (HOSE: VCG) and Cienco 4 (UPCoM: C4G).

Previously, Vinaconex also appeared in the only bidding venture meeting technical requirements in pack 5.10 – the biggest pack in Long Thanh airport with total value of over 35 trillion.

Rice price created record, Vietnam rice is still over 600 USD/ton

World rice market is still excited, Vietnam rice export price on August 3 increased to 598 USD/ton for 5%-broken, 5 USD higher than August 2, 10 USD higher than 588 USD/ton on August 1. 25%-broken rice price on August 3 is 578 USD/ton, comparing 568 USD/ton for Thailand price.

In 7 months, Vietnam rice export is 2,58 billion USD, up by 30% YoY. Average rice price is 534 USD/ton, up by 9.2% YoY. Expectedly in 2023, Vietnam will export over 7.5 million tons of rice and collect 4.1 billion USD.

Source: Cafef, Vietstock

Listing Company News

PET: Petrosetco closes for paying 8% dividend

Petro Services – Petrosetco (PET) approved 2022 dividend at the rate of 8%. Accordingly, August 10 is record date for receiving 8% share dividend of 2022. So, if successful, Petrosetco will issue 7,905,543 shares to pay dividend.

For business results, in 6 months 2023, Petrosetco revenue is 8,749.3 billion, up by 5.8% YoY and EAT is 43 billion, down by 58.4% YoY.

In 2023, Petrosetco set revenue target at 18 trillion, up by 2% YoY and EAT is 240 billion, up by 43% YoY.

BAF invests 20 billion to found bio product subsidiary company

BoM of BAF Vietnam (HOSE: BAF) approved the founding of subsidiary company in bio product and environment improvement.

New company name is BAF organic fertilizer Ltd., expected chartered capital is 20 billion. In which, BAF invests 90% or 18 billion. Operating time is expected in August 2023.

For business results, in Q2/2023, BAF net revenue is over 1.6 trillion, up by 15% YoY, but net profit dropped by 73% to 11 billion.

In 6 months, BAF net revenue is over 2.4 trillion and EAT is 16 billion, down by 17% and 87% YoY. This helped the company completing 5% profit year-target.

Damsan (ADS) Q2 profit growth is 43%

Damsan (ADS) has released Q2/2023 finance statements with net revenue of 676 billion, up by 67% YoY. According to the statements, revenue increased because An Ninh fiber is operated along with real estate revenue from Phu Xuan City increasing by 30% YoY. Equivalent gross profit is 58 billion in Q2, up by 33% YoY.

In Q2, finance revenue (deposit and loan interest) dropped by 14% YoY to 7 billion. On the contrary, finance expense increased strongly by 49% YoY to 25 billion because of loan interest growth (2 billion) and exchange rate difference loss (6.2 billion).

After expenses, Damsan EBT is 31 billion, up by 43% yoY. EAT is 25 billion, up by 39% YoY.

In 6 months, Damsan net revenue is 970 billion and EAT is 38 billion.

In 2023, Damsan set revenue targets with net revenue of over 2,984 billion and EBT of over 110 billion, up by 76% and 28% YoY. With such results, the company completed nearly 33% revenue and 43% EAT targets after half a year.

Source: Cafef, Vietstock

MARKET STATISTICS**Statistics on matching trade****TOP 5 IMPACTING GAINERS**

| HOSE | | | |
|--------|---------------|----------|----------|
| Ticker | Closing (VND) | Change % | Impact % |
| VIC | 62,200 | 6.87% | 0.32% |
| VHM | 63,000 | 4.83% | 0.26% |
| ACB | 24,400 | 4.05% | 0.08% |
| VPB | 22,200 | 2.30% | 0.07% |
| HPG | 27,350 | 1.86% | 0.06% |

| HNX | | | |
|--------|---------------|----------|----------|
| Ticker | Closing (VND) | Change % | Impact % |
| PVS | 34,300 | 3.94% | 0.21% |
| HUT | 24,800 | 4.20% | 0.12% |
| CEO | 19,900 | 3.11% | 0.10% |
| SHS | 15,500 | 1.31% | 0.05% |
| MBS | 20,700 | 1.97% | 0.05% |

TOP 5 IMPACTING DROPPERS

| HOSE | | | |
|--------|---------------|----------|----------|
| Ticker | Closing (VND) | Change % | Impact % |
| SSB | 29,000 | -4.13% | -0.06% |
| VCB | 90,100 | -0.55% | -0.06% |
| BID | 48,400 | -0.31% | -0.02% |
| SAB | 160,500 | -0.62% | -0.01% |
| FPT | 83,300 | -0.48% | -0.01% |

| HNX | | | |
|--------|---------------|----------|----------|
| Ticker | Closing (VND) | Change % | Impact % |
| PVI | 49,200 | -1.40% | -0.05% |
| HTP | 29,000 | -5.23% | -0.05% |
| VIF | 15,000 | -1.96% | -0.03% |
| KSV | 27,500 | -1.79% | -0.03% |
| BAB | 14,300 | -0.69% | -0.03% |

TOP 5 IN MATCHING VOLUME

| HOSE | | | |
|--------|---------------|----------|----------------|
| Ticker | Closing (VND) | Change % | Volume (share) |
| NVL | 19,800 | 6.74% | 79,639,195 |
| HQC | 4,900 | 6.99% | 45,088,258 |
| SHB | 13,300 | 5.14% | 42,091,364 |
| DIG | 26,900 | 5.08% | 36,225,715 |
| DXG | 19,400 | 3.74% | 31,342,731 |

| HNX | | | |
|--------|---------------|----------|----------------|
| Ticker | Closing (VND) | Change % | Volume (share) |
| SHS | 15,500 | 1.31% | 17,333,318 |
| CEO | 19,900 | 3.11% | 11,928,824 |
| PVS | 34,300 | 3.94% | 6,566,290 |
| IDJ | 7,100 | 5.97% | 5,005,389 |
| HUT | 24,800 | 4.20% | 4,528,425 |

TOP 5 IN MATCHING VALUE

| HOSE | | | |
|--------|---------------|----------|------------------|
| Ticker | Closing (VND) | Change % | Value (bil. VND) |
| NVL | 19,800 | 6.74% | 1,560.0 |
| VIC | 62,200 | 6.87% | 1,311.5 |
| DIG | 26,900 | 5.08% | 956.9 |
| PDR | 22,450 | 4.91% | 639.2 |
| DXG | 19,400 | 3.74% | 602.5 |

| HNX | | | |
|--------|---------------|----------|------------------|
| Ticker | Closing (VND) | Change % | Value (bil. VND) |
| SHS | 15,500 | 1.31% | 266.4 |
| CEO | 19,900 | 3.11% | 235.5 |
| PVS | 34,300 | 3.94% | 221.4 |
| IDC | 47,800 | 0.63% | 177.8 |
| HUT | 24,800 | 4.20% | 111.3 |

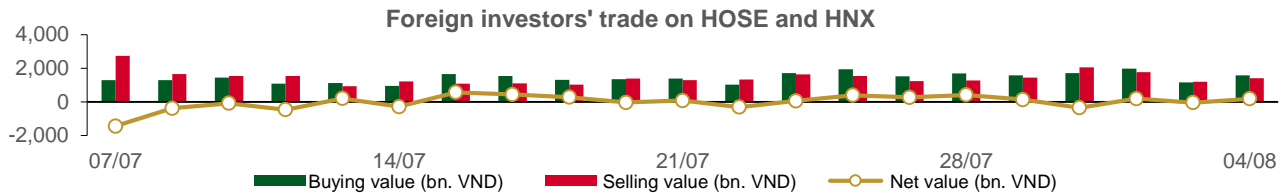
Statistics on agreement trades**TOP 5 IN AGREEMENT TRADES**

| HOSE | | |
|--------|------------------------|----------------------------|
| Ticker | Agreement vol. (share) | Agreement value (bil. VND) |
| VHM | 2,657,017 | 163.97 |
| KDC | 2,500,000 | 150.00 |
| VPB | 4,375,088 | 96.38 |
| VIB | 4,540,090 | 95.35 |
| FPT | 888,926 | 78.49 |

| HNX | | |
|--------|------------------------|----------------------------|
| Ticker | Agreement vol. (share) | Agreement value (bil. VND) |
| GKM | 399,000 | 15.50 |
| CTP | 1,200,000 | 6.00 |
| HMH | 100,000 | 1.00 |
| PMC | 6,923 | 0.47 |

Statistics on foreign investors' trade

| Exchange | Buying vol. (mil. share) | Buying value (bil. VND) | Selling vol. (mil. share) | Selling value (bil. VND) | Net selling/ buying value (mil. share) | Net selling/ buying value (bil. VND) |
|--------------|-----------------------------|----------------------------|------------------------------|-----------------------------|--|--|
| HOSE | 50.59 | 1,573.30 | 46.34 | 1,393.89 | 4.25 | 179.40 |
| HNX | 0.68 | 15.11 | 0.89 | 11.72 | (0.21) | 3.39 |
| Total | 51.27 | 1,588.41 | 47.22 | 1,405.61 | 4.05 | 182.79 |



TOP 5 BOUGHT-IN

| HOSE | | | | HNX | | | |
|---------|------------------|------------------------|----------------------------|--------|------------------|------------------------|----------------------------|
| Ticker | Closing (VND) | Buying vol. (share) | Buying value (bil. VND) | Ticker | Closing (VND) | Buying vol. (share) | Buying value (bil. VND) |
| GMD | 58,000 | 3,808,800 | 220.42 | TNG | 21,300 | 285,101 | 6.08 |
| VHM | 63,000 | 3,370,300 | 209.00 | CEO | 19,900 | 161,600 | 3.20 |
| MSN | 86,300 | 1,234,100 | 106.41 | IDC | 47,800 | 37,500 | 1.78 |
| HPG | 27,350 | 3,364,300 | 91.53 | PVS | 34,300 | 37,300 | 1.26 |
| E1VFN30 | 21,140 | 4,142,000 | 87.00 | SHS | 15,500 | 53,200 | 0.81 |

TOP 5 SOLD-OUT

| HOSE | | | | HNX | | | |
|---------|------------------|-------------------------|-----------------------------|--------|------------------|-------------------------|-----------------------------|
| Ticker | Closing (VND) | Selling vol. (share) | Selling value (bil. VND) | Ticker | Closing (VND) | Selling vol. (share) | Selling value (bil. VND) |
| VHM | 63,000 | 3,066,000 | 189.55 | BCC | 14,300 | 246,300 | 3.51 |
| KDC | 64,400 | 2,517,800 | 151.14 | PVS | 34,300 | 42,200 | 1.41 |
| E1VFN30 | 21,140 | 4,183,300 | 87.87 | NVB | 14,900 | 84,923 | 1.25 |
| HPG | 27,350 | 2,898,100 | 78.53 | MBG | 5,900 | 150,900 | 0.89 |
| GMD | 58,000 | 1,312,800 | 75.97 | TIG | 12,500 | 70,100 | 0.88 |

TOP 5 NET BUYING

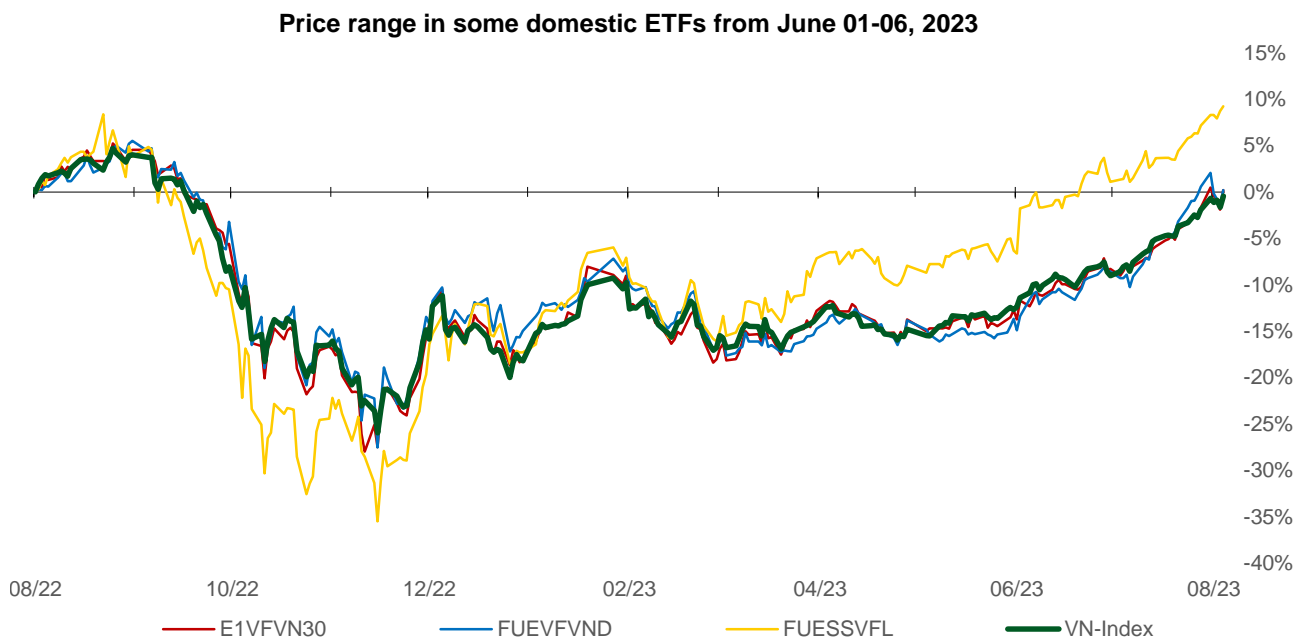
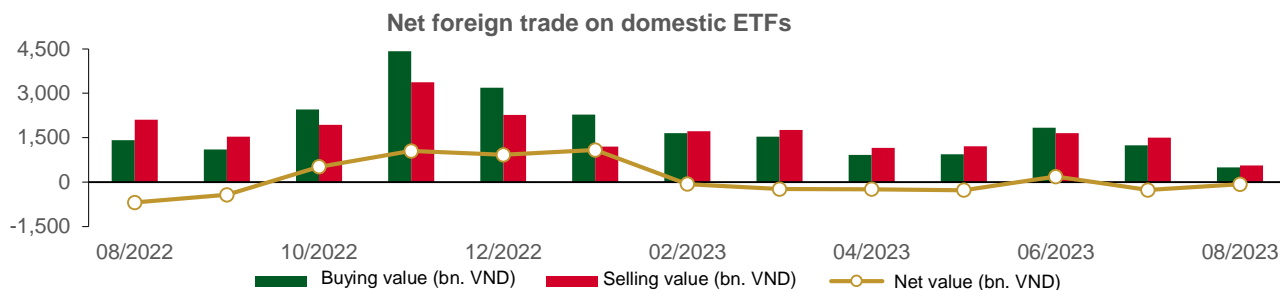
| HOSE | | | | HNX | | | |
|--------|------------------|---------------------|------------------------|--------|------------------|---------------------|------------------------|
| Ticker | Closing (VND) | Net vol. (share) | Net value (bil VND) | Ticker | Closing (VND) | Net vol. (share) | Net value (bil VND) |
| GMD | 58,000 | 2,496,000 | 144.44 | TNG | 21,300 | 285,101 | 6.08 |
| MSN | 86,300 | 1,084,500 | 93.52 | CEO | 19,900 | 141,100 | 2.79 |
| VIC | 62,200 | 774,800 | 48.33 | IDC | 47,800 | 26,820 | 1.26 |
| DCM | 33,000 | 1,020,900 | 34.04 | SHS | 15,500 | 52,664 | 0.80 |
| VNM | 73,000 | 272,600 | 19.87 | PVI | 49,200 | 10,300 | 0.51 |

TOP 5 NET SELLING

| HOSE | | | | HNX | | | |
|--------|------------------|---------------------|------------------------|--------|------------------|---------------------|------------------------|
| Ticker | Closing (VND) | Net vol. (share) | Net value (bil VND) | Ticker | Closing (VND) | Net vol. (share) | Net value (bil VND) |
| KDC | 64,400 | (2,517,800) | (151.14) | BCC | 14,300 | (246,000) | (3.50) |
| HDG | 31,750 | (1,556,400) | (49.10) | NVB | 14,900 | (82,923) | (1.22) |
| KDH | 36,000 | (964,300) | (34.39) | MBG | 5,900 | (150,900) | (0.89) |
| CTD | 64,600 | (506,900) | (32.55) | TIG | 12,500 | (70,100) | (0.88) |
| VCB | 90,100 | (258,500) | (23.44) | PVC | 19,000 | (33,700) | (0.63) |

Statistics on domestic ETF share trade

| PRICE | | | | | FOREIGN TRADE | | | |
|--------------|-------------|------------|------------------|-----------------|---------------|------------------|-------------------|---------------------|
| Ticker | Closing VND | Change (%) | Volume (share) | Value (bil VND) | Ticker | Buying (bil VND) | Selling (bil VND) | Net value (bil VND) |
| E1VFN30 | 21,140 | 2.1% | 4,252,859 | 89.32 | E1VFN30 | 87.00 | 87.87 | (0.87) |
| FUEMAV30 | 14,580 | 1.7% | 17,900 | 0.26 | FUEMAV30 | 0.25 | 0.13 | 0.12 |
| FUESSV30 | 15,110 | 1.4% | 13,115 | 0.20 | FUESSV30 | 0.14 | 0.02 | 0.11 |
| FUESSV50 | 18,920 | 0.1% | 2,800 | 0.05 | FUESSV50 | 0.00 | 0.00 | 0.00 |
| FUESSVFL | 18,950 | 0.5% | 34,000 | 0.64 | FUESSVFL | 0.33 | 0.00 | 0.32 |
| FUEVFN30 | 26,400 | 1.5% | 2,271,510 | 59.45 | FUEVFN30 | 58.55 | 58.00 | 0.56 |
| FUEVN100 | 16,130 | 2.1% | 113,229 | 1.80 | FUEVN100 | 0.51 | 1.12 | (0.61) |
| FUEIP100 | 8,840 | 1.0% | 1,700 | 0.01 | FUEIP100 | 0.00 | 0.00 | 0.00 |
| FUEKIV30 | 8,100 | 0.9% | 60,100 | 0.48 | FUEKIV30 | 0.22 | 0.22 | 0.00 |
| FUEDCMID | 10,410 | 1.7% | 6,800 | 0.07 | FUEDCMID | 0.03 | 0.00 | 0.03 |
| FUEKIVFS | 10,920 | 1.6% | 49,000 | 0.53 | FUEKIVFS | 0.27 | 0.25 | 0.02 |
| FUEMAVND | 11,050 | 0.9% | 27,700 | 0.30 | FUEMAVND | 0.30 | 0.10 | 0.20 |
| FUEFCV50 | 13,990 | 0.0% | 234 | 0.00 | FUEFCV50 | 0.00 | 0.00 | 0.00 |
| Total | | | 6,823,013 | 152.82 | Total | 147.30 | 147.61 | (0.31) |



Statistics on guaranteed warrant trade

| Warrant code (*) | Closing rate (VND) | Change (%) | Matched volume | Day to maturity | Price (VND) | Theoretical buying rate (VND) (**) | Difference from closing rate (VND) | Operating price (VND) | Converting rate n:1 | Matured date |
|------------------|--------------------|------------|----------------|-----------------|-------------|------------------------------------|------------------------------------|-----------------------|---------------------|--------------|
| CACB2208 | 1,680 | 2.4% | 30,480 | 32 | 24,400 | 1,970 | 290 | 17,940 | 3.3 | 05/09/2023 |
| CFPT2210 | 880 | 0.0% | 184,930 | 27 | 83,300 | 735 | (145) | 77,380 | 8.6 | 31/08/2023 |
| CFPT2213 | 2,360 | 0.9% | 80 | 32 | 83,300 | 2,255 | (105) | 64,050 | 8.6 | 05/09/2023 |
| CFPT2214 | 2,400 | 0.0% | 0 | 89 | 83,300 | 2,140 | (260) | 65,340 | 8.6 | 01/11/2023 |
| CFPT2302 | 1,400 | 17.7% | 210 | 12 | 83,300 | 1,196 | (204) | 73,080 | 8.6 | 16/08/2023 |
| CFPT2303 | 1,420 | 2.9% | 39,880 | 97 | 83,300 | 1,220 | (200) | 73,940 | 8.6 | 09/11/2023 |
| CFPT2304 | 2,570 | -13.8% | 9,890 | 136 | 83,300 | 1,266 | (1,304) | 72,000 | 10.0 | 18/12/2023 |
| CFPT2305 | 3,840 | -13.1% | 16,100 | 257 | 83,300 | 1,735 | (2,105) | 68,000 | 10.0 | 17/04/2024 |
| CHDB2301 | 670 | 0.0% | 3,590 | 87 | 17,150 | 349 | (321) | 16,830 | 3.5 | 30/10/2023 |
| CHDB2302 | 820 | -1.2% | 3,300 | 111 | 17,150 | 435 | (385) | 16,540 | 3.5 | 23/11/2023 |
| CHDB2303 | 770 | -1.3% | 1,590 | 143 | 17,150 | 346 | (424) | 17,500 | 3.5 | 25/12/2023 |
| CHDB2304 | 970 | -4.9% | 1,020 | 234 | 17,150 | 373 | (597) | 18,280 | 3.5 | 25/03/2024 |
| CHDB2305 | 900 | 1.1% | 200 | 206 | 17,150 | 321 | (579) | 18,470 | 3.5 | 26/02/2024 |
| CHDB2306 | 1,000 | -4.8% | 810 | 327 | 17,150 | 368 | (632) | 19,340 | 3.5 | 26/06/2024 |
| CHPG2226 | 3,760 | 1.1% | 3,410 | 32 | 27,350 | 3,949 | 189 | 19,500 | 2.0 | 05/09/2023 |
| CHPG2227 | 3,740 | -5.3% | 9,140 | 89 | 27,350 | 3,594 | (146) | 20,500 | 2.0 | 01/11/2023 |
| CHPG2302 | 3,760 | 0.5% | 370 | 54 | 27,350 | 3,737 | (23) | 20,000 | 2.0 | 27/09/2023 |
| CHPG2304 | 1,950 | -2.5% | 10 | 12 | 27,350 | 2,190 | 240 | 23,000 | 2.0 | 16/08/2023 |
| CHPG2306 | 2,650 | 3.9% | 22,860 | 97 | 27,350 | 2,560 | (90) | 20,000 | 3.0 | 09/11/2023 |
| CHPG2307 | 1,700 | 1.8% | 1,290 | 151 | 27,350 | 1,481 | (219) | 22,670 | 4.0 | 02/01/2024 |
| CHPG2308 | 1,630 | 9.4% | 9,670 | 87 | 27,350 | 1,451 | (179) | 22,110 | 4.0 | 30/10/2023 |
| CHPG2309 | 2,100 | 7.7% | 125,440 | 294 | 27,350 | 2,067 | (33) | 24,000 | 3.0 | 24/05/2024 |
| CHPG2310 | 1,290 | 9.3% | 13,140 | 59 | 27,350 | 1,160 | (130) | 23,220 | 4.0 | 02/10/2023 |
| CHPG2311 | 1,900 | 6.7% | 3,140 | 119 | 27,350 | 1,691 | (209) | 21,230 | 4.0 | 01/12/2023 |
| CHPG2312 | 1,560 | 6.9% | 3,410 | 151 | 27,350 | 1,294 | (266) | 23,780 | 4.0 | 02/01/2024 |
| CHPG2313 | 1,900 | 7.3% | 910 | 210 | 27,350 | 1,492 | (408) | 23,330 | 4.0 | 01/03/2024 |
| CHPG2314 | 3,680 | 5.8% | 30,140 | 209 | 27,350 | 3,612 | (68) | 21,450 | 2.0 | 29/02/2024 |
| CHPG2315 | 1,690 | 7.0% | 3,810 | 325 | 27,350 | 1,150 | (540) | 27,780 | 4.0 | 24/06/2024 |
| CHPG2316 | 1,880 | 5.6% | 9,540 | 416 | 27,350 | 1,205 | (675) | 28,890 | 4.0 | 23/09/2024 |
| CHPG2317 | 1,430 | 6.7% | 1,920 | 206 | 27,350 | 997 | (433) | 26,890 | 4.0 | 26/02/2024 |
| CHPG2318 | 1,290 | 9.3% | 11,170 | 235 | 27,350 | 822 | (468) | 29,220 | 4.0 | 26/03/2024 |
| CHPG2319 | 1,550 | 6.2% | 9,120 | 327 | 27,350 | 934 | (616) | 30,110 | 4.0 | 26/06/2024 |
| CHPG2320 | 2,320 | -19.4% | 27,530 | 136 | 27,350 | 1,607 | (713) | 27,000 | 2.0 | 18/12/2023 |
| CHPG2321 | 2,810 | -16.9% | 4,410 | 257 | 27,350 | 1,882 | (928) | 24,500 | 3.0 | 17/04/2024 |
| CHPG2322 | 3,100 | 7.6% | 10,900 | 348 | 27,350 | 1,966 | (1,134) | 30,000 | 2.0 | 17/07/2024 |
| CMBB2211 | 70 | -69.6% | 31,760 | 27 | 19,000 | 6 | (64) | 22,900 | 3.4 | 31/08/2023 |
| CMBB2214 | 2,790 | 2.2% | 9,390 | 32 | 19,000 | 2,715 | (75) | 14,420 | 1.7 | 05/09/2023 |
| CMBB2215 | 2,570 | 0.8% | 24,380 | 89 | 19,000 | 2,333 | (237) | 15,270 | 1.7 | 01/11/2023 |
| CMBB2304 | 770 | 2.7% | 19,210 | 59 | 19,000 | 711 | (59) | 13,010 | 8.5 | 02/10/2023 |
| CMBB2305 | 750 | 4.2% | 18,520 | 151 | 19,000 | 579 | (171) | 14,420 | 8.5 | 02/01/2024 |
| CMBB2306 | 2,320 | 0.0% | 112,990 | 294 | 19,000 | 2,138 | (182) | 16,970 | 1.7 | 24/05/2024 |
| CMSN2215 | 130 | -64.9% | 25,130 | 32 | 86,300 | 30 | (100) | 102,000 | 10.0 | 05/09/2023 |
| CMSN2301 | 1,760 | 2.3% | 9,620 | 87 | 86,300 | 1,426 | (334) | 73,980 | 10.0 | 30/10/2023 |
| CMSN2302 | 4,620 | 2.2% | 21,610 | 294 | 86,300 | 4,048 | (572) | 66,000 | 6.0 | 24/05/2024 |
| CMSN2303 | 1,300 | 4.8% | 10,280 | 59 | 86,300 | 1,035 | (265) | 78,000 | 10.0 | 02/10/2023 |
| CMSN2304 | 1,820 | 1.1% | 1,440 | 119 | 86,300 | 1,385 | (435) | 75,680 | 10.0 | 01/12/2023 |
| CMSN2305 | 2,160 | 2.4% | 1,680 | 210 | 86,300 | 1,535 | (625) | 76,790 | 10.0 | 01/03/2024 |
| CMSN2306 | 1,950 | 0.0% | 320 | 206 | 86,300 | 1,335 | (615) | 80,000 | 10.0 | 26/02/2024 |
| CMSN2307 | 2,340 | 0.4% | 20 | 327 | 86,300 | 1,444 | (896) | 83,000 | 10.0 | 26/06/2024 |
| CMWG2214 | 790 | -2.5% | 14,130 | 32 | 53,000 | 751 | (39) | 46,060 | 9.9 | 05/09/2023 |
| CMWG2215 | 1,140 | 0.9% | 250 | 89 | 53,000 | 989 | (151) | 44,570 | 9.9 | 01/11/2023 |
| CMWG2302 | 1,000 | 3.1% | 101,540 | 97 | 53,000 | 1,115 | 115 | 49,530 | 5.9 | 09/11/2023 |
| CMWG2303 | 1,130 | -0.9% | 1,080 | 59 | 53,000 | 1,116 | (14) | 31,030 | 19.8 | 02/10/2023 |
| CMWG2304 | 1,100 | 0.9% | 6,920 | 151 | 53,000 | 1,004 | (96) | 33,680 | 19.8 | 02/01/2024 |

| | | | | | | | | | | |
|----------|-------|--------|---------|-----|--------|-------|-------|--------|-----|------------|
| CMWG2305 | 5,380 | 0.0% | 92,200 | 294 | 53,000 | 4,794 | (586) | 35,660 | 4.0 | 24/05/2024 |
| CNVL2301 | 1,750 | 21.5% | 57,940 | 87 | 19,800 | 1,640 | (110) | 13,460 | 4.0 | 30/10/2023 |
| CNVL2302 | 1,500 | 25.0% | 97,100 | 111 | 19,800 | 1,103 | (397) | 16,330 | 4.0 | 23/11/2023 |
| CNVL2303 | 1,830 | 20.4% | 57,760 | 234 | 19,800 | 1,189 | (641) | 17,330 | 4.0 | 25/03/2024 |
| CNVL2304 | 1,810 | 20.7% | 65,890 | 144 | 19,800 | 1,302 | (508) | 15,560 | 4.0 | 26/12/2023 |
| CNVL2305 | 2,050 | 14.5% | 59,530 | 327 | 19,800 | 1,381 | (669) | 17,000 | 4.0 | 26/06/2024 |
| CPDR2301 | 2,190 | 9.0% | 58,890 | 87 | 22,450 | 2,098 | (92) | 14,220 | 4.0 | 30/10/2023 |
| CPDR2302 | 1,660 | 14.5% | 114,870 | 111 | 22,450 | 1,218 | (442) | 18,670 | 4.0 | 23/11/2023 |
| CPDR2303 | 1,960 | 10.7% | 2,290 | 234 | 22,450 | 1,305 | (655) | 19,890 | 4.0 | 25/03/2024 |
| CPDR2304 | 1,870 | 10.0% | 21,630 | 144 | 22,450 | 1,407 | (463) | 18,000 | 4.0 | 26/12/2023 |
| CPDR2305 | 2,200 | 10.0% | 16,670 | 327 | 22,450 | 1,434 | (766) | 20,220 | 4.0 | 26/06/2024 |
| CPOW2301 | 700 | 4.5% | 52,670 | 87 | 13,600 | 401 | (299) | 13,980 | 2.0 | 30/10/2023 |
| CPOW2302 | 740 | 7.3% | 33,610 | 111 | 13,600 | 397 | (343) | 14,330 | 2.0 | 23/11/2023 |
| CPOW2303 | 680 | 1.5% | 44,880 | 143 | 13,600 | 313 | (367) | 15,330 | 2.0 | 25/12/2023 |
| CPOW2304 | 900 | -1.1% | 3,040 | 234 | 13,600 | 355 | (545) | 16,330 | 2.0 | 25/03/2024 |
| CPOW2305 | 1,030 | 5.1% | 24,560 | 206 | 13,600 | 488 | (542) | 15,000 | 2.0 | 26/02/2024 |
| CPOW2306 | 1,230 | 0.0% | 10,010 | 327 | 13,600 | 541 | (689) | 16,000 | 2.0 | 26/06/2024 |
| CPOW2307 | 1,420 | -22.0% | 3,550 | 136 | 13,600 | 636 | (784) | 13,500 | 2.0 | 18/12/2023 |
| CPOW2308 | 1,140 | -13.6% | 32,530 | 257 | 13,600 | 514 | (626) | 12,000 | 5.0 | 17/04/2024 |
| CPOW2309 | 1,650 | -18.3% | 2,540 | 287 | 13,600 | 719 | (931) | 14,500 | 2.0 | 17/05/2024 |
| CSTB2224 | 4,380 | -0.2% | 14,940 | 32 | 28,950 | 4,499 | 119 | 20,000 | 2.0 | 05/09/2023 |
| CSTB2225 | 4,420 | 0.0% | 7,930 | 89 | 28,950 | 4,352 | (68) | 20,500 | 2.0 | 01/11/2023 |
| CSTB2303 | 4,000 | -0.5% | 7,910 | 97 | 28,950 | 3,704 | (296) | 22,000 | 2.0 | 09/11/2023 |
| CSTB2304 | 710 | 4.4% | 60,350 | 87 | 28,950 | 545 | (165) | 28,670 | 5.0 | 30/10/2023 |
| CSTB2305 | 980 | 3.2% | 4,650 | 151 | 28,950 | 673 | (307) | 29,110 | 5.0 | 02/01/2024 |
| CSTB2306 | 2,540 | 4.1% | 29,710 | 294 | 28,950 | 2,205 | (335) | 30,000 | 2.0 | 24/05/2024 |
| CSTB2307 | 440 | 7.3% | 39,300 | 59 | 28,950 | 334 | (106) | 30,000 | 5.0 | 02/10/2023 |
| CSTB2308 | 920 | 2.2% | 7,770 | 119 | 28,950 | 721 | (199) | 27,800 | 5.0 | 01/12/2023 |
| CSTB2309 | 800 | 2.6% | 16,620 | 151 | 28,950 | 554 | (246) | 30,560 | 5.0 | 02/01/2024 |
| CSTB2310 | 980 | 3.2% | 5,140 | 210 | 28,950 | 700 | (280) | 30,330 | 5.0 | 01/03/2024 |
| CSTB2311 | 1,940 | 3.7% | 42,280 | 118 | 28,950 | 1,822 | (118) | 27,700 | 2.0 | 30/11/2023 |
| CSTB2312 | 1,200 | -4.0% | 10,020 | 325 | 28,950 | 702 | (498) | 33,330 | 5.0 | 24/06/2024 |
| CSTB2313 | 1,320 | 4.8% | 5,680 | 416 | 28,950 | 715 | (605) | 35,560 | 5.0 | 23/09/2024 |
| CSTB2314 | 940 | -2.1% | 20 | 206 | 28,950 | 557 | (383) | 32,220 | 5.0 | 26/02/2024 |
| CSTB2315 | 870 | -3.3% | 1,520 | 235 | 28,950 | 489 | (381) | 34,330 | 5.0 | 26/03/2024 |
| CSTB2316 | 1,050 | 1.0% | 910 | 327 | 28,950 | 543 | (507) | 36,330 | 5.0 | 26/06/2024 |
| CSTB2317 | 1,880 | -24.2% | 11,060 | 136 | 28,950 | 935 | (945) | 30,000 | 3.0 | 18/12/2023 |
| CSTB2318 | 1,510 | -20.9% | 2,500 | 287 | 28,950 | 904 | (606) | 32,000 | 4.0 | 17/05/2024 |
| CSTB2319 | 1,120 | -16.4% | 3,220 | 257 | 28,950 | 605 | (515) | 27,000 | 9.0 | 17/04/2024 |
| CTCB2212 | 60 | -81.3% | 101,280 | 27 | 33,600 | 2 | (58) | 44,000 | 4.0 | 31/08/2023 |
| CTCB2215 | 1,850 | 0.5% | 14,680 | 32 | 33,600 | 1,797 | (53) | 26,500 | 4.0 | 05/09/2023 |
| CTCB2216 | 2,030 | 6.3% | 7,110 | 89 | 33,600 | 1,678 | (352) | 27,500 | 4.0 | 01/11/2023 |
| CTCB2301 | 1,430 | 0.0% | 0 | 12 | 33,600 | 1,226 | (204) | 30,000 | 3.0 | 16/08/2023 |
| CTCB2302 | 3,440 | 4.9% | 17,110 | 294 | 33,600 | 2,906 | (534) | 27,000 | 3.0 | 24/05/2024 |
| CTPB2302 | 740 | 2.8% | 10,100 | 59 | 18,950 | 668 | (72) | 14,220 | 7.2 | 02/10/2023 |
| CTPB2303 | 720 | 5.9% | 16,280 | 151 | 18,950 | 522 | (198) | 15,810 | 7.2 | 02/01/2024 |
| CVHM2216 | 390 | -4.9% | 72,870 | 27 | 63,000 | 380 | (10) | 62,000 | 8.0 | 31/08/2023 |
| CVHM2219 | 1,540 | 28.3% | 20,910 | 32 | 63,000 | 1,508 | (32) | 56,000 | 5.0 | 05/09/2023 |
| CVHM2220 | 1,830 | 14.4% | 24,970 | 89 | 63,000 | 1,496 | (334) | 58,000 | 5.0 | 01/11/2023 |
| CVHM2301 | 1,300 | 7.4% | 2,000 | 87 | 63,000 | 1,024 | (276) | 56,880 | 8.0 | 30/10/2023 |
| CVHM2302 | 4,900 | 5.8% | 11,760 | 294 | 63,000 | 4,063 | (837) | 50,000 | 4.0 | 24/05/2024 |
| CVHM2303 | 910 | 26.4% | 34,070 | 59 | 63,000 | 684 | (226) | 59,890 | 8.0 | 02/10/2023 |
| CVHM2304 | 1,770 | 12.0% | 4,520 | 119 | 63,000 | 1,405 | (365) | 53,560 | 8.0 | 01/12/2023 |
| CVHM2305 | 1,810 | 9.0% | 2,230 | 210 | 63,000 | 1,249 | (561) | 57,780 | 8.0 | 01/03/2024 |
| CVHM2306 | 1,620 | 2.5% | 230 | 206 | 63,000 | 1,042 | (578) | 60,670 | 8.0 | 26/02/2024 |
| CVHM2307 | 1,970 | 2.6% | 1,410 | 327 | 63,000 | 1,165 | (805) | 62,670 | 8.0 | 26/06/2024 |
| CVIB2201 | 3,240 | -0.3% | 590 | 32 | 21,000 | 3,174 | (66) | 15,960 | 1.6 | 05/09/2023 |
| CVIB2302 | 2,370 | -0.8% | 58,710 | 294 | 21,000 | 2,149 | (221) | 19,150 | 1.7 | 24/05/2024 |
| CVIC2301 | 1,510 | 23.8% | 67,840 | 87 | 62,200 | 1,170 | (340) | 53,980 | 8.0 | 30/10/2023 |
| CVIC2302 | 1,450 | 25.0% | 60,590 | 111 | 62,200 | 1,060 | (390) | 55,670 | 8.0 | 23/11/2023 |

| | | | | | | | | | | |
|----------|-------|--------|---------|-----|--------|-------|---------|--------|------|------------|
| CVIC2303 | 1,510 | 24.8% | 51,640 | 143 | 62,200 | 954 | (556) | 57,780 | 8.0 | 25/12/2023 |
| CVIC2304 | 1,750 | 18.2% | 64,090 | 234 | 62,200 | 988 | (762) | 59,890 | 8.0 | 25/03/2024 |
| CVIC2305 | 1,590 | 18.7% | 22,760 | 206 | 62,200 | 856 | (734) | 61,110 | 8.0 | 26/02/2024 |
| CVIC2306 | 1,990 | 18.5% | 5,150 | 327 | 62,200 | 1,008 | (982) | 62,220 | 8.0 | 26/06/2024 |
| CVNM2212 | 260 | -42.2% | 24,950 | 32 | 73,000 | 53 | (207) | 78,020 | 7.6 | 05/09/2023 |
| CVNM2301 | 1,060 | -0.9% | 8,530 | 87 | 73,000 | 766 | (294) | 66,710 | 9.7 | 30/10/2023 |
| CVNM2302 | 720 | -1.4% | 59,850 | 59 | 73,000 | 465 | (255) | 69,940 | 9.7 | 02/10/2023 |
| CVNM2303 | 1,140 | -5.8% | 7,820 | 119 | 73,000 | 731 | (409) | 67,790 | 9.7 | 01/12/2023 |
| CVNM2304 | 1,440 | 1.4% | 1,200 | 210 | 73,000 | 794 | (646) | 68,760 | 9.7 | 01/03/2024 |
| CVNM2305 | 1,400 | -5.4% | 30 | 206 | 73,000 | 649 | (751) | 71,020 | 9.7 | 26/02/2024 |
| CVNM2306 | 1,740 | -4.9% | 50 | 327 | 73,000 | 689 | (1,051) | 73,170 | 9.7 | 26/06/2024 |
| CVPB2212 | 110 | -67.7% | 126,540 | 27 | 22,200 | 59 | (51) | 24,640 | 2.7 | 31/08/2023 |
| CVPB2214 | 1,290 | 4.9% | 116,160 | 32 | 22,200 | 1,310 | 20 | 17,000 | 4.0 | 05/09/2023 |
| CVPB2301 | 890 | 0.0% | 4,930 | 54 | 22,200 | 692 | (198) | 19,800 | 4.0 | 27/09/2023 |
| CVPB2302 | 1,720 | -1.7% | 3,050 | 12 | 22,200 | 1,808 | 88 | 18,600 | 2.0 | 16/08/2023 |
| CVPB2303 | 520 | 4.0% | 16,760 | 59 | 22,200 | 406 | (114) | 15,780 | 16.0 | 02/10/2023 |
| CVPB2304 | 580 | 3.6% | 26,050 | 151 | 22,200 | 350 | (230) | 17,000 | 16.0 | 02/01/2024 |
| CVPB2305 | 2,850 | -9.5% | 74,440 | 257 | 22,200 | 1,748 | (1,102) | 18,000 | 3.0 | 17/04/2024 |
| CVPB2306 | 2,550 | -16.4% | 6,800 | 136 | 22,200 | 1,612 | (938) | 20,000 | 2.0 | 18/12/2023 |
| CVRE2216 | 220 | -37.1% | 21,950 | 27 | 28,700 | 112 | (108) | 31,000 | 4.0 | 31/08/2023 |
| CVRE2220 | 350 | -2.8% | 30,030 | 32 | 28,700 | 207 | (143) | 30,000 | 4.0 | 05/09/2023 |
| CVRE2221 | 450 | 12.5% | 15,110 | 89 | 28,700 | 244 | (206) | 32,500 | 4.0 | 01/11/2023 |
| CVRE2302 | 650 | 8.3% | 40,170 | 87 | 28,700 | 457 | (193) | 28,670 | 5.0 | 30/10/2023 |
| CVRE2303 | 2,460 | 7.0% | 25,620 | 294 | 28,700 | 2,063 | (397) | 25,000 | 3.0 | 24/05/2024 |
| CVRE2304 | 380 | 2.7% | 67,700 | 59 | 28,700 | 262 | (118) | 30,000 | 5.0 | 02/10/2023 |
| CVRE2305 | 900 | 7.1% | 105,180 | 119 | 28,700 | 698 | (202) | 27,110 | 5.0 | 01/12/2023 |
| CVRE2306 | 990 | 3.1% | 2,530 | 210 | 28,700 | 661 | (329) | 29,330 | 5.0 | 01/03/2024 |
| CVRE2307 | 970 | -2.0% | 13,910 | 206 | 28,700 | 573 | (397) | 30,330 | 5.0 | 26/02/2024 |
| CVRE2308 | 1,240 | -0.8% | 2,010 | 327 | 28,700 | 695 | (545) | 31,330 | 5.0 | 26/06/2024 |

(*) All are buying stock rights, conducted in European style and payment method is in cash

(**) PHS evaluates in Black-Scholes model

LIST OF CODES ANALYZED

| Ticker | Exchange | Market price | Reasonable price * | Report date | 2022F EAT (bil. VND) | PE forward | PB forward |
|---------------------|----------|--------------|--------------------|-------------|----------------------|------------|------------|
| IDC | HNX | 47,800 | 48,527 | 03/08/2023 | 48,527 | 6.1 | 2.8 |
| PNJ | HOSE | 80,800 | 89,000 | 03/08/2023 | 1,729 | 12.2 | 3.0 |
| NT2 | HOSE | 29,350 | 32,500 | 02/08/2023 | 671 | 13.9 | 2.1 |
| STB | HOSE | 28,950 | 38,000 | 14/07/2023 | 7,259 | 9.9 | 1.6 |
| TCM | HOSE | 51,200 | 52,300 | 06/07/2023 | 211 | 20.4 | 2.1 |
| PLX | HOSE | 40,300 | 45,100 | 05/07/2023 | 3,513 | 18.3 | 2.5 |
| ACB | HOSE | 24,400 | 25,400 | 30/06/2023 | 14,955 | 6.6 | 1.3 |
| VCB | HOSE | 90,100 | 131,270 | 13/06/2023 | 36,911 | 16.8 | 3.6 |
| BID | HOSE | 48,400 | 57,956 | 13/06/2023 | 23,019 | 12.7 | 2.3 |
| CTG | HOSE | 31,000 | 39,700 | 13/06/2023 | 19,121 | 10.0 | 1.5 |
| MBB | HOSE | 19,000 | 27,200 | 13/06/2023 | 21,242 | 5.8 | 1.2 |
| HDB | HOSE | 17,150 | 23,170 | 13/06/2023 | 10,216 | 6.2 | 1.3 |
| VPB | HOSE | 22,200 | 19,260 | 13/06/2023 | 15,638 | 8.3 | 1.1 |
| TCB | HOSE | 33,600 | 47,270 | 13/06/2023 | 21,351 | 7.8 | 1.2 |
| TPB | HOSE | 18,950 | 24,000 | 13/06/2023 | 6,732 | 5.7 | 1.0 |
| OCB | HOSE | 18,550 | 22,700 | 13/06/2023 | 4,354 | 7.2 | 1.1 |
| VIB | HOSE | 21,000 | 29,300 | 13/06/2023 | 9,378 | 6.6 | 1.5 |
| LPB | HOSE | 17,250 | 18,800 | 13/06/2023 | 4,925 | 6.6 | 1.1 |
| MSB | HOSE | 14,400 | 21,900 | 13/06/2023 | 4,803 | 9.1 | 1.4 |
| SHB | HOSE | 13,300 | 15,600 | 13/06/2023 | 8,035 | 6.0 | 0.9 |
| DHG | HOSE | 119,700 | 111,600 | 13/06/2023 | 1,061 | 13.8 | 3.0 |

This news is distributed by Research Department – Phu Hung Securities JSC. All the above information is collected from trusted sources. However, because the stock market sees influences from many complicated factors and is hard to predict, investors must be responsible for their own investments.

| | | | | | | | |
|---------------------|-------|---------|---------|------------|--------|-------|-----|
| IMP | HOSE | 68,300 | 68,000 | 13/06/2023 | 286 | 15.9 | 2.2 |
| POW | HOSE | 13,600 | 15,500 | 13/06/2023 | 2,948 | 14.0 | 1.1 |
| GEG | HOSE | 15,350 | 18,800 | 13/06/2023 | 208 | 46.5 | 1.7 |
| QTP | UPCOM | 16,643 | 23,900 | 13/06/2023 | 1,300 | 8.3 | 1.6 |
| GAS | HOSE | 100,300 | 111,200 | 13/06/2023 | 13,688 | 15.7 | 3.1 |
| BSR | UPCOM | 20,296 | 24,900 | 13/06/2023 | 8,347 | 6.3 | 0.9 |
| PVS | HNX | 34,300 | 30,700 | 13/06/2023 | 1,059 | 16.8 | 1.2 |
| MPC | UPCOM | 18,302 | 19,200 | 13/06/2023 | 597 | 12.9 | 1.3 |
| FMC | HOSE | 46,500 | 50,700 | 13/06/2023 | 314 | 10.5 | 1.4 |
| MSH | HOSE | 38,800 | 37,450 | 13/06/2023 | 262 | 8.2 | 1.3 |
| VHM | HOSE | 63,000 | 83,100 | 13/06/2023 | 29,034 | 12.5 | 2.3 |
| NLG | HOSE | 40,000 | 38,400 | 13/06/2023 | 642 | 22.9 | 1.4 |
| KDH | HOSE | 36,000 | 36,500 | 13/06/2023 | 1,363 | 19.1 | 1.9 |
| VRE | HOSE | 28,700 | 39,700 | 13/06/2023 | 3,345 | 26.9 | 2.6 |
| KBC | HOSE | 32,500 | 32,000 | 13/06/2023 | 2,073 | 11.9 | 1.3 |
| DPR | HOSE | 63,800 | 88,300 | 13/06/2023 | 239 | 15.9 | 1.0 |
| MWG | HOSE | 53,000 | 50,000 | 13/06/2023 | 2,325 | 33.3 | 3.0 |
| FRT | HOSE | 79,000 | 85,000 | 13/06/2023 | 107 | 111.1 | 6.6 |
| DGW | HOSE | 56,000 | 38,500 | 13/06/2023 | 393 | 16.3 | 2.4 |
| HPG | HOSE | 27,350 | 35,400 | 13/06/2023 | 7,698 | 16.6 | 1.2 |
| VNM | HOSE | 73,000 | 70,200 | 13/06/2023 | 9,143 | 18.0 | 4.5 |
| SAB | HOSE | 160,500 | 162,300 | 13/06/2023 | 5,641 | 21.0 | 5.6 |
| SBT | HOSE | 15,800 | 16,700 | 13/06/2023 | 827 | 15.7 | 1.1 |
| PVI | HNX | 49,200 | 47,002 | 19/12/2022 | 996 | 13.8 | 1.3 |
| BMI | HOSE | 25,600 | 25,190 | 19/12/2022 | 427 | 9.0 | 1.0 |
| BVH | HOSE | 47,100 | 70,900 | 19/12/2022 | 2,967 | 17.7 | 2.3 |
| ANV | HOSE | 36,400 | 30,100 | 19/12/2022 | 320 | 12.0 | 1.3 |
| VHC | HOSE | 76,600 | 69,000 | 19/12/2022 | 1,510 | 8.4 | 1.5 |
| SZC | HOSE | 37,300 | 42,700 | 19/12/2022 | 585 | 7.5 | 2.6 |
| GVR | HOSE | 21,900 | 29,755 | 19/12/2022 | 5,521 | 27.8 | 2.1 |
| LHG | HOSE | 28,000 | 42,250 | 19/12/2022 | 653 | 3.5 | 1.2 |
| PVT | HOSE | 23,650 | 26,900 | 19/12/2022 | 831 | 14.1 | 1.2 |
| TRA | HOSE | 88,000 | 117,400 | 19/12/2022 | 349 | 13.9 | 2.8 |
| STK | HOSE | 31,200 | 45,800 | 19/12/2022 | 239 | 13.5 | 1.8 |

Source: PHS

*Reasonable price hasn't been adjusted with operated rights after reporting date

Analyst Certification

The report is made by Pham Quang Chuong, analyst – Phu Hung Securities Joint Stock Company. Each research analyst(s), strategist(s) or research associate(s) responsible for the preparation and content of all or any identified portion of this research report hereby certifies that, with respect to each issuer or security or any identified portion of the report with respect to each issuer or security that the research analyst, strategist or research associate covers in this research report, all of the views expressed by that research analyst, strategist or research associate in this research report accurately reflect their personal views about those issuer(s) or securities. Each research analyst(s), strategist(s) or research associate(s) also certify that no part of their compensation was, is, or will be, directly or indirectly, related to the specific recommendation(s) or view(s) expressed by that research analyst, strategist or research associate in this research report.

Ratings Definition

Buy = higher than domestic market by over 10%

Hold = similar to domestic market at the rate of +10% ~ -10%

Sell = lower than domestic market by below 10%

No rating = the code is not rated in Phu Hung or not yet listed

The performance is determined by total recollection in 12 months (including dividend).

Analyst Certification

This information has been compiled from sources we believe to be reliable, but we do not hold ourselves responsible for its completeness or accuracy. It is not an offer to sell or solicitation of an offer to buy any securities. Phu Hung Securities and its affiliates and their officers and employees may or may not have a position in or with respect to the securities mentioned herein. Phu Hung Securities (or one of its affiliates) may from time to time perform investment banking or other services or solicit investment banking or other business for any company mentioned in this report. All opinions and estimates included in this report constitute our judgment as of this date and are subject to change without notice.

© Phu Hung Securities Corporation

F21, Phu My Hung Tower, 08 Hoang Van Thai, Tan Phu Ward, District 7, HCMC

Phone: (84-28) 5 413 5479

Fax: (84-28) 5 413 5472

Customer Service: (84-28) 5 411 8855

Call Center: (84-28) 5 413 5488

E-mail: info@phs.vn / support@phs.vn

Web: www.phs.vn

Phu My Hung Trading office

Ground Floor, CR2-08, 107 Ton
Dat Tien, Tan Phu Ward, District 7,
Ho Chi Minh City
Tel: (84-28) 5 413 5478
Fax: (84-28) 5 413 5473

District 3 Branch

4th & 5th Floor, 458 Nguyen
Thi Minh Khai, Ward 2,
District 3, Ho Chi Minh City
Tel: (84-28) 3 820 8068
Fax: (84-28) 3 820 8206

Thanh Xuan Branch

5th Floor, UDIC Complex Building, N04
Hoang Dao Thuy, Trung Hoa Ward, Cau
Giay District, Ha Noi
Tel: (84-24) 6 250 9999
Fax: (84-24) 6 250 6666

Tan Binh Branch

Park Legend Building, 251 Hoang
Van Thu Street, Ward 2, Tan Binh
District, Ho Chi Minh City
Tel: (84-28) 3 813 2401
Fax: (84-28) 3 813 2415

Hanoi Branch

5th Floor, Vinafor Building,
No.127 Lo Duc, Dong Mac
Ward, Hai Ba Trung District,
Ha Noi
Tel: (84-24) 3 933 4566
Fax: (84-24) 3 933 4820

Hai Phong Branch

2nd Floor, Building No.18 Tran Hung
Dao, Hoang Van Thu Ward, Hong Bang
District, Hai Phong
Tel: (84-225) 384 1810
Fax: (84-225) 384 1801

District 1 Branch

Room 1003A, 10th Floor, No. 81-
83-83B-85 Ham Nghi Street,
Nguyen Thai Binh Ward, District 1,
Ho Chi Minh City
Tel: ((84-28) 3 535 6060
Fax: (84-28) 3 535 2912