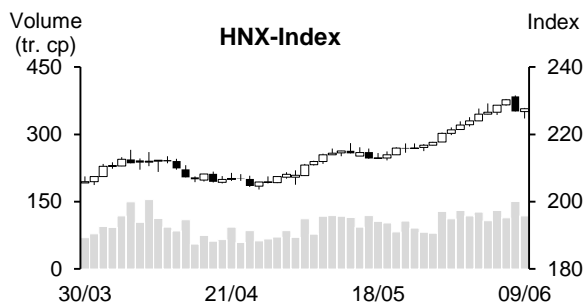
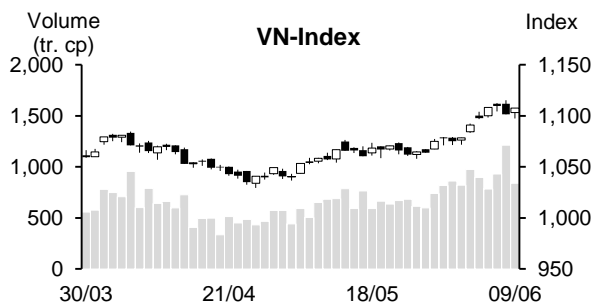


Day	Monday 05/06	Tuesday 06/06	Wednesday 07/06	Thursday 08/06	Friday 09/06	Average
VN-Index	1,097.82	1,108.31	1,109.54	1,101.32	1,107.53	1,104.90
Change +/-	6.98	10.49	1.23	-8.22	6.21	3.34
Change %	0.64%	0.96%	0.11%	-0.74%	0.56%	0.31%
Matched volume (mil. shares)	894.19	782.87	930.63	1,211.92	839.93	931.91
Matched value (bil. Dong)	16,320.98	14,349.49	16,521.19	21,017.23	15,085.39	16,658.86
Foreign net trade (bil. Dong)	-112.76	69.82	-168.65	-316.09	45.01	-96.53
VN30	1,091.08	1,102.32	1,105.68	1,092.46	1,100.85	1,098.48
Change +/-	4.12	11.24	3.36	-13.22	8.39	2.78
Change %	0.38%	1.03%	0.30%	-1.20%	0.77%	0.26%
Matched volume (mil. shares)	215.32	198.49	266.73	279.50	198.82	231.77
Matched value (bil. Dong)	5,343.58	5,066.23	6,275.92	6,854.94	4,784.87	5,665.11
Foreign net trade (bil. Dong)	-63.02	-47.60	-89.18	-202.54	-81.58	-96.78
HNX-Index	226.56	228.72	230.33	226.78	227.60	228.00
Change +/-	0.53	2.16	1.61	-3.55	0.82	0.31
Change %	0.23%	0.95%	0.70%	-1.54%	0.36%	0.14%
Matched volume (mil. shares)	107.27	130.54	114.06	150.24	117.95	124.01
Matched value (bil. Dong)	1,628.99	1,941.90	1,825.02	2,497.16	1,806.55	1,939.92
Foreign net trade (bil. Dong)	15.36	9.23	-10.46	47.06	30.05	18.25



REMARKABLE POINTS ON THE MARKET

The market saw another gaining week with positive support from the cash flow. Correcting pressure was remarkable on Thursday because of selling pressure, the indexes quickly returned to the race with sign of pulling pillars at the end of the week. Most groups closed in green. Seeing main contribution on the gaining trend are banking and real estate. Meanwhile, medical products, steel, and securities saw the strongest gain.

TECHNICAL POINT OF VIEW

VN-Index saw another positive trading week but there was sign of slowing down when moving to resistant level of 1,100-1,120. At the end of the week, there was sign of a base-withdraw candle with sudden pull at the end, however, the appearing location didn't reach any support, so it might only be technical recovering sign after previous strong drop. With such sign, we think that the index might saw another 1-2 gains to test peak level, but we need to pay attention on possibility of creating two small peaks within 1,100-1,120 to start a correcting trend. We think that the index might only drop to support level of 1,070-1,080 while the cash flow differentiates further.

VN-Index



HNX-Index also gained but the gain lowered as it hasn't surpassed week MA50. On daily chart, there was sign of Bearish Engulfing candles as RSI is at high over buying (>80), showing possibility of a short-term correction. Close support level is around 220. In middle-term, we think that the index might move to 260-270.

HNX-Index



In general, both indexes showed sign of a short-term correction again, but there might not be any influence on middle-term gaining trend. General strategy might still be joining in with average weight and raising it to a high level when surpassing peak of 1,125, with priority on Banking, Steel, Retail, Aqua products, Fertilizer, and Chemical.

MARKET STATISTICS**TOP 5 IN MATCHING VOLUME**

HOSE			
Ticker	Closing (VND)	Change %	Volume (share)
VND	18,950	3.55%	228,037,387
SHB	12,150	0.83%	187,278,307
NVL	14,600	5.42%	159,430,066
HPG	22,900	6.02%	153,815,457
GEX	19,100	11.70%	143,306,114

HNX			
Ticker	Closing (VND)	Change %	Volume (share)
SHS	12,700	5.83%	135,813,872
CEO	26,000	-3.35%	50,142,608
PVS	30,600	-1.29%	34,887,965
MBS	18,300	-1.08%	20,463,254
IDJ	14,400	-4.00%	18,552,754

TOP 5 IN MATCHING VALUE

HOSE			
Ticker	Closing (VND)	Change %	Value (bil. VND)
VND	18,950	3.55%	4,255.5
HPG	22,900	6.02%	3,460.3
SSI	25,250	4.77%	3,186.0
DIG	20,900	-4.13%	2,716.9
GEX	19,100	11.70%	2,641.2

HNX			
Ticker	Closing (VND)	Change %	Value (bil. VND)
SHS	12,700	5.83%	1,685.6
CEO	26,000	-3.35%	1,336.1
PVS	30,600	-1.29%	1,081.6
IDC	42,000	0.00%	778.3
MBS	18,300	-1.08%	376.0

STATISTICS ON THE IMPACT ON THE INDEX**TOP 5 GAINING IMPACT**

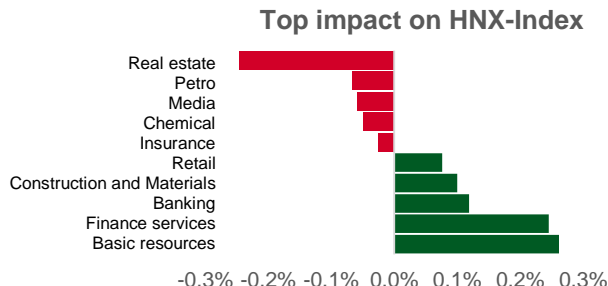
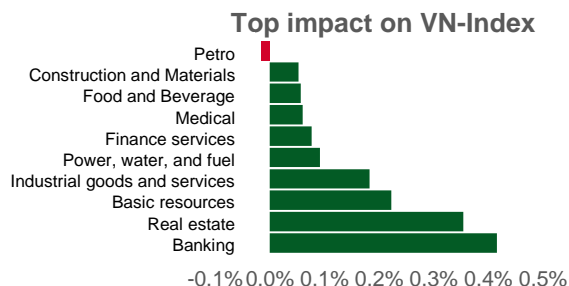
HOSE			
Ticker	Closing (VND)	Change %	Impact %
VCB	100,500	5.90%	0.61%
VHM	55,500	3.93%	0.21%
HPG	22,900	6.02%	0.17%
MSN	76,500	5.81%	0.14%
GAS	93,700	1.85%	0.08%

HNX			
Ticker	Closing (VND)	Change %	Impact %
SHS	12,700	5.83%	0.20%
NVB	15,800	6.04%	0.18%
DHT	59,000	15.69%	0.08%
VC7	19,500	26.62%	0.07%
SDU	36,900	31.79%	0.06%

TOP 5 DROPPING IMPACT

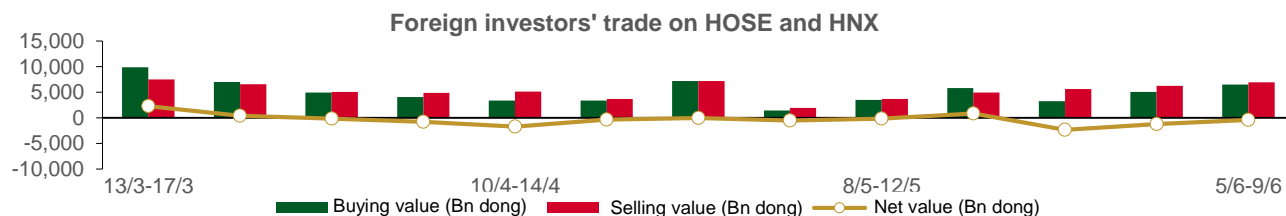
HOSE			
Ticker	Closing (VND)	Change %	Impact %
BID	43,450	-2.80%	-0.15%
GVR	18,050	-4.50%	-0.08%
VPB	19,500	-1.76%	-0.05%
CTG	28,350	-1.05%	-0.03%
HDB	18,500	-2.89%	-0.03%

HNX			
Ticker	Closing (VND)	Change %	Impact %
KSF	40,800	-4.67%	-0.21%
SIC	25,900	-27.45%	-0.08%
CEO	26,000	-3.35%	-0.08%
PVS	30,600	-1.29%	-0.07%
HTP	32,900	-5.46%	-0.06%



STATISTICS ON FOREIGN INVESTORS' TRADE

Exchange	Buying vol. (mil. share)	Buying value (bil. VND)	Selling vol. (mil. share)	Selling value (bil. VND)	Net selling/buying value (mil. share)	Net selling/buying value (bil. VND)
HOSE	221.99	6,384.83	227.09	6,867.51	(5.11)	(482.67)
HNX	5.80	157.12	3.66	65.87	2.13	91.24
Total	227.79	6,541.95	230.76	6,933.38	(2.97)	(391.43)



TOP 5 BOUGHT-IN

HOSE			
Ticker	Closing (VND)	Buying vol. (share)	Buying value (bil. VND)
SSI	25,250	11,848,100	294.25
VND	18,950	13,652,800	254.49
VHM	55,500	4,502,160	246.51
VCB	100,500	1,159,400	114.75
KBC	27,600	3,385,700	94.69

HNX			
Ticker	Closing (VND)	Buying vol. (share)	Buying value (bil. VND)
PVS	30,600	1,278,895	39.94
IDC	42,000	863,000	36.74
DTD	29,000	390,300	11.85
MBS	18,300	417,100	7.68
TNG	20,000	368,000	7.32

TOP 5 SOLD-OUT

HOSE			
Ticker	Closing (VND)	Buying vol. (share)	Buying value (bil. VND)
VNM	65,800	(9,467,900)	(626.80)
CTG	28,350	(8,245,100)	(236.55)
ST8	23,000	(6,114,970)	(146.76)
HCM	26,600	(4,363,000)	(117.67)
FUEVFVND	23,300	(4,935,500)	(115.11)

HNX			
Ticker	Closing (VND)	Buying vol. (share)	Buying value (bil. VND)
SD5	8,500	(871,900)	(7.68)
BVS	23,300	(203,400)	(4.87)
NVB	15,800	(284,755)	(4.52)
PVI	49,500	(61,000)	(2.89)
NDX	7,100	(237,300)	(1.66)

Analyst Certification

The report is made by Pham Quang Chuong, analyst – Phu Hung Fund Management Joint Stock Company. Each research analyst(s), strategist(s) or research associate(s) responsible for the preparation and content of all or any identified portion of this research report hereby certifies that, with respect to each issuer or security or any identified portion of the report with respect to each issuer or security that the research analyst, strategist or research associate covers in this research report, all of the views expressed by that research analyst, strategist or research associate in this research report accurately reflect their personal views about those issuer(s) or securities. Each research analyst(s), strategist(s) or research associate(s) also certify that no part of their compensation was, is, or will be, directly or indirectly, related to the specific recommendation(s) or view(s) expressed by that research analyst, strategist or research associate in this research report.

Ratings Definition

Buy = higher than domestic market by over 10%
Hold = similar to domestic market at the rate of +10% ~ -10%
Sell = lower than domestic market by below 10%
No rating = the code is not rated in Phu Hung or not yet listed
The performance is determined by total recollection in 12 months (including dividend).

Analyst Certification

This information has been compiled from sources we believe to be reliable, but we do not hold ourselves responsible for its completeness or accuracy. It is not an offer to sell or solicitation of an offer to buy any securities. Phu Hung Securities and its affiliates and their officers and employees may or may not have a position in or with respect to the securities mentioned herein. Phu Hung Securities (or one of its affiliates) may from time to time perform investment banking or other services or solicit investment banking or other business for any company mentioned in this report. All opinions and estimates included in this report constitute our judgment as of this date and are subject to change without notice.

© Phu Hung Securities Corporation

F21, Phu My Hung Tower, 08 Hoang Van Thai, Tan Phu Ward, District 7, HCMC
Phone: (84-28) 5 413 5479 Fax: (84-28) 5 413 5472
Customer Service: (84-28) 5 411 8855 Call Center: (84-28) 5 413 5488
E-mail: info@phs.vn / support@phs.vn Web: www.phs.vn

Phu My Hung Trading office

CR2-08 building, 107 Ton Dat
Tien, Tan Phu Ward, District 7,
HCMC
Tel: (84-28) 5 413 5478
Fax: (84-28) 5 413 5473

District 3 Branch

Floor 4 & 5, D&D Tower, 458
Nguyen Thi Minh Khai Street,
District 3, HCMC
Tel: (84-28) 3 820 8068
Fax: (84-28) 3 820 8206

Thanh Xuan Branch

F5, UDIC Complex, N04 Hoang Dao
Thuy, Trung Hoa Ward, Cau Giay
District, Hanoi
Tel: (84-24) 6 250 9999
Fax: (84-24) 6 250 6666

Tan Binh Branch

Park Legend Building, 251 Hoang
Van Thu, Ward 2, Tan Binh District
Tel: (84-28) 3 813 2401
Fax: (84-28) 3 813 2415

Hanoi Branch

F5, Vinafor Tower, 127 Lo
Duc, Hai Ba Trung District,
Hanoi
Tel: (84-24) 3 933 4566
Fax: (84-24) 3 933 4820

Hai Phong Branch

F2, Eliteco Building, Tran Hung Dao,
Hong Bang District, Hai Phong
Tel: (84-225) 384 1810
Fax: (84-225) 384 1801

District 1 Branch

No 1003A, F10, Ruby Tower, 81-
83-83B-85 Ham Nghi, Nguyen
Thai Binh Ward, District 1, HCMC
Tel: ((84-28) 3 535 6060
Fax: (84-28) 3 535 2912