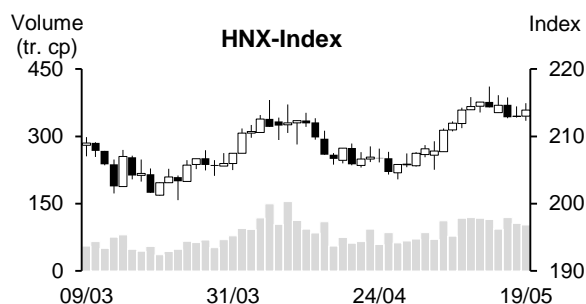
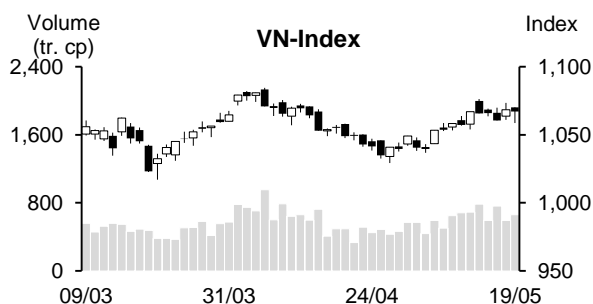


Day	Monday 15/05	Tuesday 16/05	Wednesday 17/05	Thursday 18/05	Friday 19/05	Average
VN-Index	1,065.71	1,065.91	1,060.44	1,068.31	1,067.07	1,065.49
Change +/-	-1.19	0.20	-5.47	7.87	-1.24	0.03
Change %	-0.11%	0.02%	-0.51%	0.74%	-0.12%	0.00%
Matched volume (mil. shares)	783.88	592.27	762.34	591.02	661.79	678.26
Matched value (bil. Dong)	12,608.84	9,641.14	11,647.54	10,255.49	10,588.27	10,948.26
Foreign net trade (bil. Dong)	-376.49	-25.52	103.69	104.03	980.11	157.16
VN30	1,070.90	1,069.64	1,062.10	1,070.76	1,068.84	1,068.45
Change +/-	4.46	-1.26	-7.54	8.66	-1.92	0.48
Change %	0.42%	-0.12%	-0.70%	0.82%	-0.18%	0.05%
Matched volume (mil. shares)	195.83	126.61	153.78	146.73	122.58	149.11
Matched value (bil. Dong)	4,883.47	3,116.46	3,840.76	3,920.90	3,158.97	3,784.11
Foreign net trade (bil. Dong)	-192.59	34.05	202.35	86.85	-187.63	-11.39
HNX-Index	214.33	214.62	212.86	213.01	213.91	213.75
Change +/-	-0.77	0.29	-1.76	0.15	0.90	-0.24
Change %	-0.36%	0.13%	-0.82%	0.07%	0.42%	-0.11%
Matched volume (mil. shares)	114.82	93.27	118.60	105.95	102.61	107.05
Matched value (bil. Dong)	1,567.62	1,414.67	1,629.01	1,420.40	1,603.06	1,526.95
Foreign net trade (bil. Dong)	-16.27	14.97	13.62	31.09	3.31	9.34



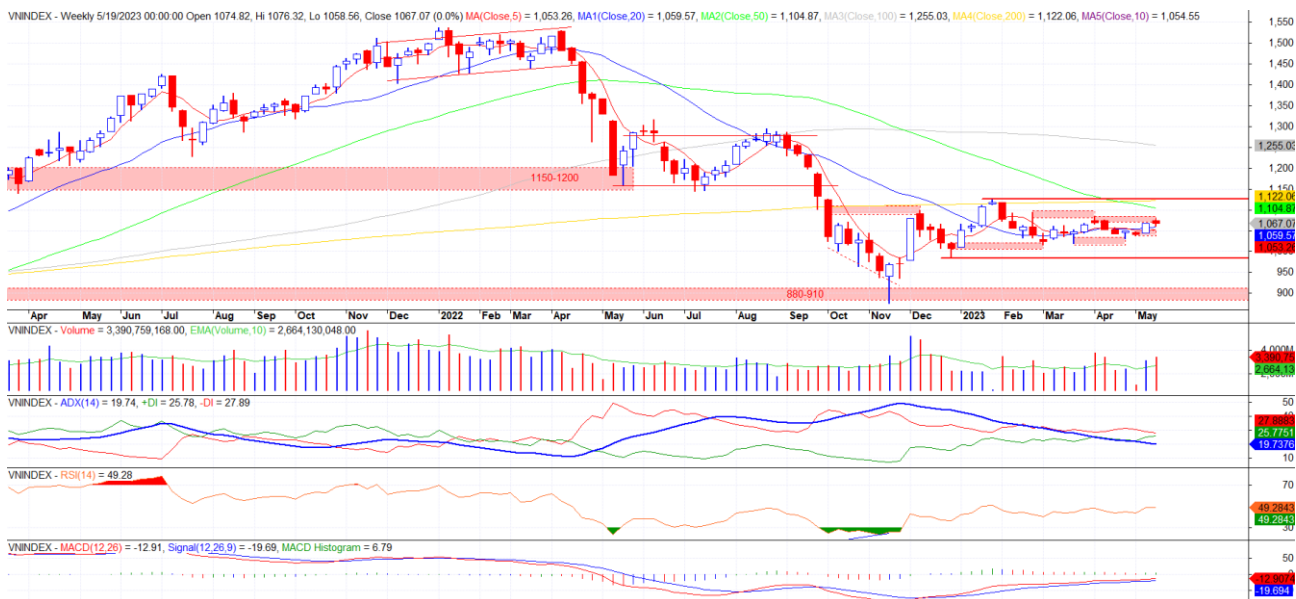
REMARKABLE POINTS ON THE MARKET

The market returned to struggling within a small range after previous positive gaining week. Main indexes saw gains and drops with strong differentiation within each group on large-cap codes. Petro was a rare group that gained positively in the week. Remarkably, different from previous shaking weeks, the liquidity was quite high, showing that the cash flow was still exciting. For foreign investors, they returned to net buying after 2 weeks of net selling previously. However, the buying came mainly from the agreement trade on STG.

TECHNICAL POINT OF VIEW

VN-Index struggled after gaining to 1,075-1,085. On daily chart, the index saw surprising situation at the end of the week with quick recovery at the end of the session, forming a positive long base-withdraw candle, creating hope on a strong gain to surpass MA200 this week. However, we think that it is unlikely to surpass 1,075-1,085 in short-term and the index might still correct toward support level of 1,040-1,050 points. If losing this level, it will drop to 980-1,000. If it can surpass 1,075-1,085 resistant level, it might move toward of peak level of 1,100-1,120, but we don't highly evaluate this scenario.

VN-Index



HNX-Index dropped slightly again after previous strong gaining week. On daily chart, the index approached old peak of 215 and saw a slight correction last week, showing that it might surpass this peak level to move toward old peak of 220-225. Here, it might correct again. If surpassing this level, it might surpass MA200 and prolong the gaining trend, but we don't have strong expectation on this possibility.

HNX-Index



In general, both indexes are approaching resistant levels that we think not likely to be broken in short-term. Therefore, general strategy is seeing limited trade, waiting for positive sign around new support level to consider joining back in. For risky investors that have hope on the cash flow differentiating, considering joining in with low weight.

MARKET STATISTICS**TOP 5 IN MATCHING VOLUME**

HOSE			
Ticker	Closing (VND)	Change %	Volume (share)
VND	16,100	1.58%	142,438,290
DIG	20,500	-0.73%	128,561,500
SHB	11,800	1.72%	120,560,051
VIX	9,800	-2.00%	108,134,980
SSI	22,900	-1.51%	105,947,049

HNX			
Ticker	Closing (VND)	Change %	Volume (share)
SHS	11,000	-2.65%	104,940,416
PVS	28,300	7.60%	44,367,405
CEO	25,400	-5.93%	39,504,191
DDG	8,900	12.66%	29,277,838
IDJ	13,800	-7.38%	16,753,197

TOP 5 IN MATCHING VALUE

HOSE			
Ticker	Closing (VND)	Change %	Value (bil. VND)
STB	27,850	3.92%	2,741.4
DIG	20,500	-0.73%	2,624.4
SSI	22,900	-1.51%	2,426.0
VND	16,100	1.58%	2,254.6
HPG	21,800	-2.46%	2,021.4

HNX			
Ticker	Closing (VND)	Change %	Value (bil. VND)
PVS	28,300	7.60%	1,198.9
SHS	11,000	-2.65%	1,149.5
CEO	25,400	-5.93%	1,022.4
IDC	38,800	-2.76%	371.6
L14	45,700	-9.50%	291.7

STATISTICS ON THE IMPACT ON THE INDEX**TOP 5 GAINING IMPACT**

HOSE			
Ticker	Closing (VND)	Change %	Impact %
VHM	54,100	5.66%	0.30%
VCB	94,200	1.51%	0.16%
GAS	94,900	2.59%	0.11%
VIC	52,500	1.55%	0.07%
FPT	82,800	2.86%	0.06%

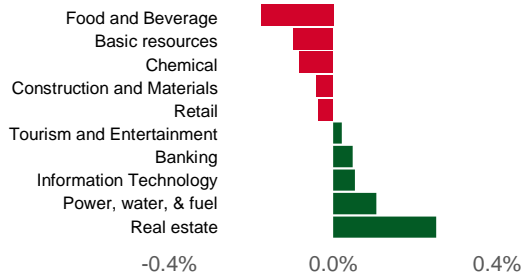
HNX			
Ticker	Closing (VND)	Change %	Impact %
PVS	28,300	7.60%	0.36%
PVI	51,000	5.37%	0.23%
IPA	14,600	8.15%	0.09%
HHC	82,400	20.29%	0.09%
L18	37,700	12.54%	0.06%

TOP 5 DROPPING IMPACT

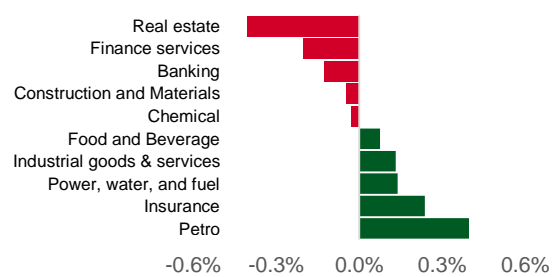
HOSE			
Ticker	Closing (VND)	Change %	Impact %
HPG	21,800	-2.46%	-0.08%
BID	44,400	-1.33%	-0.07%
VPB	19,300	-2.28%	-0.07%
MSN	72,400	-2.69%	-0.07%
GVR	16,250	-3.27%	-0.05%

HNX			
Ticker	Closing (VND)	Change %	Impact %
CEO	25,400	-5.93%	-0.15%
IDC	38,800	-2.76%	-0.14%
SHS	11,000	-2.65%	-0.09%
MBS	17,100	-3.39%	-0.09%
IDJ	13,800	-7.38%	-0.07%

Top impact on VN-Index

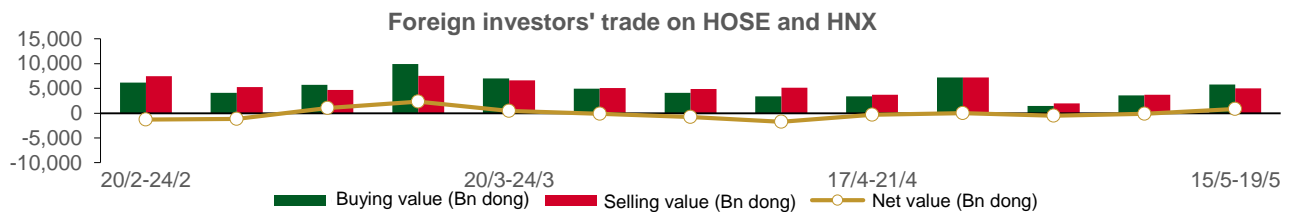


Top impact on HNX-Index



STATISTICS ON FOREIGN INVESTORS' TRADE

Exchange	Buying vol. (mil. share)	Buying value (bil. VND)	Selling vol. (mil. share)	Selling value (bil. VND)	Net selling/ buying value (mil. share)	Net selling/ buying value (bil. VND)
HOSE	186.59	5,706.22	191.09	4,920.38	(4.50)	785.82
HNX	5.08	102.73	2.49	56.01	2.59	46.72
Total	191.67	5,808.95	193.58	4,976.39	(1.91)	832.54



TOP 5 BOUGHT-IN

HOSE			
Ticker	Closing (VND)	Buying vol. (share)	Buying value (bil. VND)
STG	53,700	24,464,986	1,284.90
HPG	21,800	18,037,700	396.84
VHM	54,100	5,416,400	289.93
VRE	28,000	4,928,700	138.94
VIC	52,500	2,394,500	128.91

HNX			
Ticker	Closing (VND)	Buying vol. (share)	Buying value (bil. VND)
DTD	28,400	1,238,600	36.38
TNG	19,200	866,498	16.85
CEO	25,400	455,830	11.57
DDG	8,900	922,690	9.02
IDJ	13,800	117,700	1.72

TOP 5 SOLD-OUT

HOSE			
Ticker	Closing (VND)	Buying vol. (share)	Buying value (bil. VND)
VNM	68,600	(4,324,600)	(298.23)
CTG	28,000	(8,990,800)	(252.42)
STB	27,850	(6,157,500)	(168.41)
SHB	11,800	(12,517,500)	(144.89)
VPB	19,300	(5,202,100)	(102.28)

HNX			
Ticker	Closing (VND)	Buying vol. (share)	Buying value (bil. VND)
PVS	28,300	(1,181,925)	(31.21)
BVS	23,800	(108,200)	(2.47)
VCS	50,800	(26,700)	(1.34)
IDC	38,800	(28,400)	(1.11)
ONE	5,100	(111,200)	(0.56)

Analyst Certification

The report is made by Pham Quang Chuong, analyst – Phu Hung Fund Management Joint Stock Company. Each research analyst(s), strategist(s) or research associate(s) responsible for the preparation and content of all or any identified portion of this research report hereby certifies that, with respect to each issuer or security or any identified portion of the report with respect to each issuer or security that the research analyst, strategist or research associate covers in this research report, all of the views expressed by that research analyst, strategist or research associate in this research report accurately reflect their personal views about those issuer(s) or securities. Each research analyst(s), strategist(s) or research associate(s) also certify that no part of their compensation was, is, or will be, directly or indirectly, related to the specific recommendation(s) or view(s) expressed by that research analyst, strategist or research associate in this research report.

Ratings Definition

Buy = higher than domestic market by over 10%
Hold = similar to domestic market at the rate of +10% ~ -10%
Sell = lower than domestic market by below 10%
No rating = the code is not rated in Phu Hung or not yet listed
The performance is determined by total recollection in 12 months (including dividend).

Analyst Certification

This information has been compiled from sources we believe to be reliable, but we do not hold ourselves responsible for its completeness or accuracy. It is not an offer to sell or solicitation of an offer to buy any securities. Phu Hung Securities and its affiliates and their officers and employees may or may not have a position in or with respect to the securities mentioned herein. Phu Hung Securities (or one of its affiliates) may from time to time perform investment banking or other services or solicit investment banking or other business for any company mentioned in this report. All opinions and estimates included in this report constitute our judgment as of this date and are subject to change without notice.

© Phu Hung Securities Corporation

F21, Phu My Hung Tower, 08 Hoang Van Thai, Tan Phu Ward, District 7, HCMC
Phone: (84-28) 5 413 5479 Fax: (84-28) 5 413 5472
Customer Service: (84-28) 5 411 8855 Call Center: (84-28) 5 413 5488
E-mail: info@phs.vn / support@phs.vn Web: www.phs.vn

Phu My Hung Trading office

CR2-08 building, 107 Ton Dat
Tien, Tan Phu Ward, District 7,
HCMC
Tel: (84-28) 5 413 5478
Fax: (84-28) 5 413 5473

District 3 Branch

F2, Phuong Nam Building,
157 Vo Thi Sau, District 3,
HCMC
Tel: (84-28) 3 820 8068
Fax: (84-28) 3 820 8206

Thanh Xuan Branch

F5, UDIC Complex, N04 Hoang Dao
Thuy, Trung Hoa Ward, Cau Giay
District, Hanoi
Tel: (84-24) 6 250 9999
Fax: (84-24) 6 250 6666

Tan Binh Branch

Park Legend Building, 251 Hoang
Van Thu, Ward 2, Tan Binh District
Tel: (84-28) 3 813 2401
Fax: (84-28) 3 813 2415

Hanoi Branch

F5, Vinafor Tower, 127 Lo
Duc, Hai Ba Trung District,
Hanoi
Tel: (84-24) 3 933 4566
Fax: (84-24) 3 933 4820

Hai Phong Branch

F2, Eliteco Building, Tran Hung Dao,
Hong Bang District, Hai Phong
Tel: (84-225) 384 1810
Fax: (84-225) 384 1801

District 1 Branch

No 1003A, F10, Ruby Tower, 81-
83-83B-85 Ham Nghi, Nguyen
Thai Binh Ward, District 1, HCMC
Tel: ((84-28) 3 535 6060
Fax: (84-28) 3 535 2912