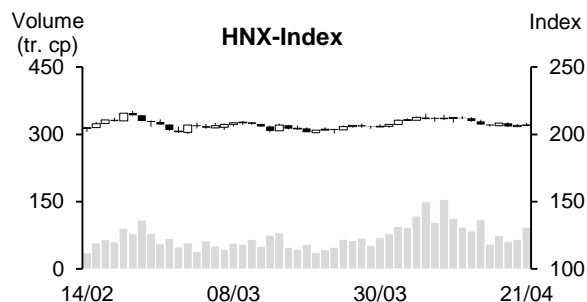
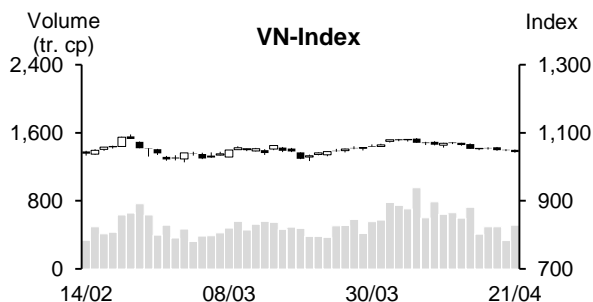


Day	Monday 17/04	Tuesday 18/04	Wednesday 19/04	Thursday 20/04	Friday 21/04	Average
VN-Index	1,053.81	1,055.02	1,048.98	1,049.25	1,042.91	1,049.99
Change +/-	0.92	1.21	-6.04	0.27	-6.34	-2.00
Change %	0.09%	0.11%	-0.57%	0.03%	-0.60%	-0.19%
Matched volume (mil. shares)	406.67	494.53	496.39	332.67	512.55	448.56
Matched value (bil. Dong)	6,716.93	8,464.42	8,612.00	5,638.56	8,840.79	7,654.54
Foreign net trade (bil. Dong)	206.85	138.64	-487.55	53.07	-229.63	-63.72
VN30	1,065.02	1,064.55	1,056.14	1,053.61	1,046.18	1,057.10
Change +/-	1.59	-0.47	-8.41	-2.53	-7.43	-3.45
Change %	0.15%	-0.04%	-0.79%	-0.24%	-0.71%	-0.33%
Matched volume (mil. shares)	96.99	122.15	140.57	83.47	147.54	118.14
Matched value (bil. Dong)	2,311.30	2,777.06	3,153.98	1,933.08	3,129.40	2,660.96
Foreign net trade (bil. Dong)	86.44	125.19	46.72	113.68	-52.12	63.98
HNX-Index	206.63	208.25	205.85	206.61	206.92	206.85
Change +/-	-0.62	1.62	-2.40	0.76	0.31	-0.07
Change %	-0.30%	0.78%	-1.15%	0.37%	0.15%	-0.03%
Matched volume (mil. shares)	55.58	74.33	61.63	65.21	93.05	69.96
Matched value (bil. Dong)	722.25	1,072.18	891.74	856.88	1,221.33	952.88
Foreign net trade (bil. Dong)	11.51	9.41	1.81	-0.47	-13.54	1.74



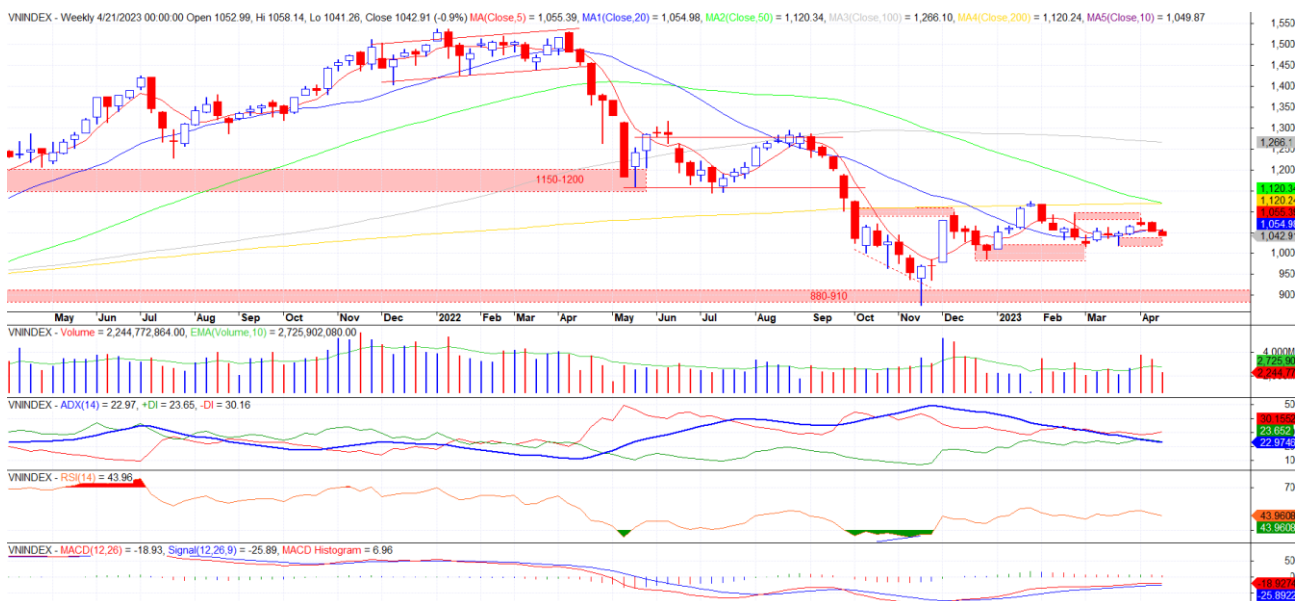
REMARKABLE POINTS ON THE MARKET

The market saw another gaining week. The indexes' drop was lower with alternative gains and drops. However, the liquidity was only low, showing cautiousness. Besides, foreign investors saw another net selling so the market saw a lack of supportive demand. Other than securities that gained on Friday, most other groups closed in red. On the other side, midcap and penny codes were positive with many positive gaining groups like sugar, aqua products, textile, plastic, and pharmaceutical.

TECHNICAL POINT OF VIEW

VN-Index saw another dropping week and stayed below week MA5 and 20. On daily chart, with a drop at the end of the week and increasing volume, the index might drop further toward support level of 1,017-1,036 in the first half of the week. Current drop saw narrowing price range with dropping volume, this is a basis for the index to recover to support level. However, we need to observe the demand at this level: if the demand is strong, the index might end the drop and return to old peak level around 1,085, but if the demand is weak, it might only be a t+ recovery before dropping again.

VN-Index



HNX-Index also saw a dropping week, but the drop was light with Doji candle forming on week chart. On daily chart, the index stayed below MA line, especially at the end of the week with long head-withdraw candle and increasing volume, this might warn that the index will drop further this week and might lose collecting level of 204-208. If this happens, the index might break support level of 197-200 and drop to bottom level of 168-184.

HNX-Index



In general, both indexes showed sign of dropping further in the first half of this week and might observe the demand at support level to predict if the recovery possibility is strong or weak. General strategy is observe further and wait for positive sign around new support level to consider joining back in.

MARKET STATISTICS**TOP 5 IN MATCHING VOLUME**

HOSE			
Ticker	Closing (VND)	Change %	Volume (share)
SHB	11,100	-6.33%	131,022,312
NVL	13,600	-4.23%	120,158,353
DIG	17,100	5.56%	106,704,541
SSI	21,650	2.12%	85,845,912
HAG	7,890	2.47%	69,848,995

HNX			
Ticker	Closing (VND)	Change %	Volume (share)
SHS	10,200	0.99%	94,490,324
CEO	23,400	1.30%	29,255,923
MBS	17,600	10.00%	20,091,991
IDJ	12,000	9.09%	18,793,271
PVS	24,900	-2.73%	14,740,144

TOP 5 IN MATCHING VALUE

HOSE			
Ticker	Closing (VND)	Change %	Value (bil. VND)
SSI	21,650	2.12%	1,847.9
DIG	17,100	5.56%	1,818.2
NVL	13,600	-4.23%	1,747.9
SHB	11,100	-6.33%	1,507.0
STB	25,600	-0.39%	1,345.1

HNX			
Ticker	Closing (VND)	Change %	Value (bil. VND)
SHS	10,200	0.99%	967.0
CEO	23,400	1.30%	686.6
PVS	24,900	-2.73%	375.8
MBS	17,600	10.00%	339.1
IDC	38,400	1.05%	258.4

STATISTICS ON THE IMPACT ON THE INDEX**TOP 5 GAINING IMPACT**

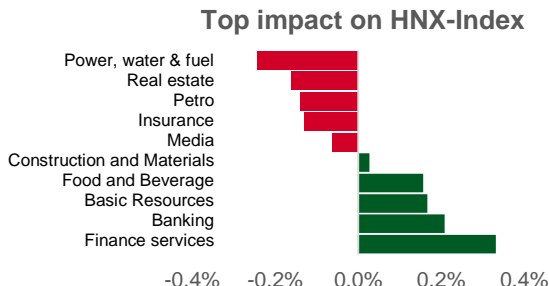
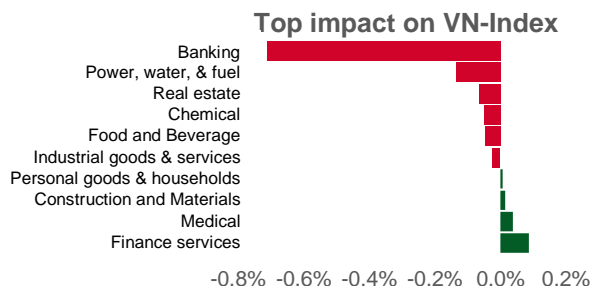
HOSE			
Ticker	Closing (VND)	Change %	Impact %
SAB	170,500	2.10%	0.05%
VHM	50,300	0.60%	0.03%
BMP	74,000	18.59%	0.02%
SBT	16,350	8.28%	0.02%
VHC	61,300	6.98%	0.02%

HNX			
Ticker	Closing (VND)	Change %	Impact %
MBS	17,600	10.00%	0.23%
VIF	13,800	10.40%	0.18%
NTP	34,900	9.40%	0.15%
BAB	14,000	2.19%	0.10%
IDJ	12,000	9.09%	0.07%

TOP 5 DROPPING IMPACT

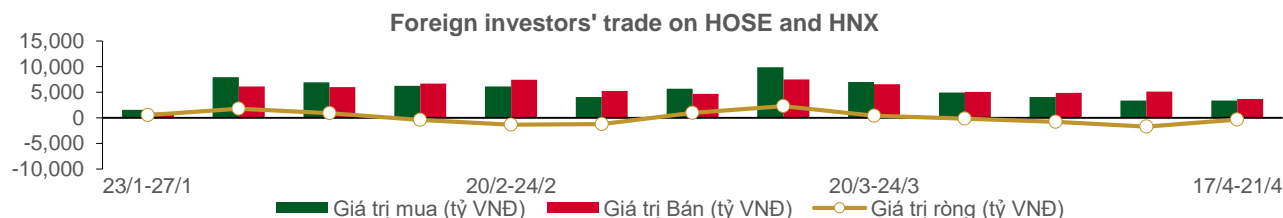
HOSE			
Ticker	Closing (VND)	Change %	Impact %
VPB	19,450	-5.12%	-0.17%
GAS	95,400	-2.75%	-0.12%
VCB	87,500	-1.02%	-0.10%
VNM	70,900	-2.61%	-0.09%
MSN	76,400	-2.18%	-0.06%

HNX			
Ticker	Closing (VND)	Change %	Impact %
KSF	40,000	-7.83%	-0.39%
DDG	15,000	-40.24%	-0.23%
PVS	24,900	-2.73%	-0.13%
NVB	13,900	-3.47%	-0.11%
PTI	29,900	-9.12%	-0.09%



STATISTICS ON FOREIGN INVESTORS' TRADE

Exchange	Buying vol. (mil. share)	Buying value (bil. VND)	Selling vol. (mil. share)	Selling value (bil. VND)	Net selling/buying value (mil. share)	Net selling/buying value (bil. VND)
HOSE	124.24	3,329.19	146.26	3,647.83	(22.02)	(318.62)
HNX	2.51	58.67	2.89	49.95	(0.38)	8.72
Total	126.75	3,387.86	149.14	3,697.78	(22.39)	(309.90)



TOP 5 BOUGHT-IN

HOSE			
Ticker	Closing (VND)	Buying vol. (share)	Buying value (bil. VND)
HPG	20,700	13,929,900	290.28
VPB	19,450	4,811,800	95.94
VHM	50,300	1,344,200	68.08
PNJ	77,000	748,900	58.74
VRE	27,900	1,683,900	47.53

HNX			
Ticker	Closing (VND)	Buying vol. (share)	Buying value (bil. VND)
IDC	38,400	280,800	10.79
PVS	24,900	351,300	8.99
CEO	23,400	121,990	2.84
TNG	18,200	119,850	2.11
IDJ	12,000	88,170	1.05

TOP 5 SOLD-OUT

HOSE			
Ticker	Closing (VND)	Buying vol. (share)	Buying value (bil. VND)
MSB	12,350	(30,569,500)	(405.52)
VNM	70,900	(1,409,800)	(100.99)
STB	25,600	(2,842,200)	(73.73)
BMP	74,000	(1,008,200)	(67.64)
DGC	52,000	(726,400)	(39.01)

HNX			
Ticker	Closing (VND)	Buying vol. (share)	Buying value (bil. VND)
MBS	17,600	(751,900)	(12.47)
NVB	13,900	(219,900)	(3.04)
BVS	19,400	(51,000)	(0.97)
TVC	5,000	(138,200)	(0.68)
VNR	23,700	(20,000)	(0.48)

Analyst Certification

The report is made by Pham Quang Chuong, analyst – Phu Hung Fund Management Joint Stock Company. Each research analyst(s), strategist(s) or research associate(s) responsible for the preparation and content of all or any identified portion of this research report hereby certifies that, with respect to each issuer or security or any identified portion of the report with respect to each issuer or security that the research analyst, strategist or research associate covers in this research report, all of the views expressed by that research analyst, strategist or research associate in this research report accurately reflect their personal views about those issuer(s) or securities. Each research analyst(s), strategist(s) or research associate(s) also certify that no part of their compensation was, is, or will be, directly or indirectly, related to the specific recommendation(s) or view(s) expressed by that research analyst, strategist or research associate in this research report.

Ratings Definition

Buy = higher than domestic market by over 10%
Hold = similar to domestic market at the rate of +10% ~ -10%
Sell = lower than domestic market by below 10%
No rating = the code is not rated in Phu Hung or not yet listed
The performance is determined by total recollection in 12 months (including dividend).

Analyst Certification

This information has been compiled from sources we believe to be reliable, but we do not hold ourselves responsible for its completeness or accuracy. It is not an offer to sell or solicitation of an offer to buy any securities. Phu Hung Securities and its affiliates and their officers and employees may or may not have a position in or with respect to the securities mentioned herein. Phu Hung Securities (or one of its affiliates) may from time to time perform investment banking or other services or solicit investment banking or other business for any company mentioned in this report. All opinions and estimates included in this report constitute our judgment as of this date and are subject to change without notice.

© Phu Hung Securities Corporation

F21, Phu My Hung Tower, 08 Hoang Van Thai, Tan Phu Ward, District 7, HCMC
Phone: (84-28) 5 413 5479 Fax: (84-28) 5 413 5472
Customer Service: (84-28) 5 411 8855 Call Center: (84-28) 5 413 5488
E-mail: info@phs.vn / support@phs.vn Web: www.phs.vn

Phu My Hung Trading office

CR2-08 building, 107 Ton Dat
Tien, Tan Phu Ward, District 7,
HCMC
Tel: (84-28) 5 413 5478
Fax: (84-28) 5 413 5473

District 3 Branch

F2, Phuong Nam Building,
157 Vo Thi Sau, District 3,
HCMC
Tel: (84-28) 3 820 8068
Fax: (84-28) 3 820 8206

Thanh Xuan Branch

F5, UDIC Complex, N04 Hoang Dao
Thuy, Trung Hoa Ward, Cau Giay
District, Hanoi
Tel: (84-24) 6 250 9999
Fax: (84-24) 6 250 6666

Tan Binh Branch

Park Legend Building, 251 Hoang
Van Thu, Ward 2, Tan Binh District
Tel: (84-28) 3 813 2401
Fax: (84-28) 3 813 2415

Hanoi Branch

F5, Vinafor Tower, 127 Lo
Duc, Hai Ba Trung District,
Hanoi
Tel: (84-24) 3 933 4566
Fax: (84-24) 3 933 4820

Hai Phong Branch

F2, Eliteco Building, Tran Hung Dao,
Hong Bang District, Hai Phong
Tel: (84-225) 384 1810
Fax: (84-225) 384 1801

District 1 Branch

No 1003A, F10, Ruby Tower, 81-
83-83B-85 Ham Nghi, Nguyen
Thai Binh Ward, District 1, HCMC
Tel: ((84-28) 3 535 6060
Fax: (84-28) 3 535 2912